

Technical Data Sheet

FITC Rat Anti-Mouse IgG2a/2b

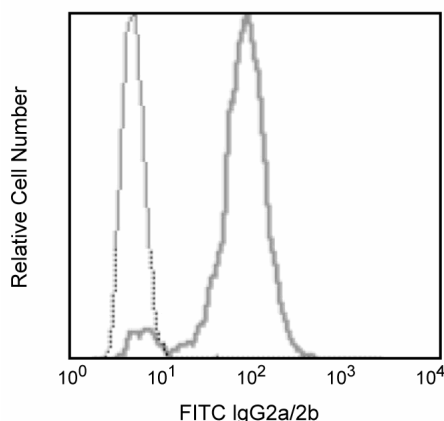
Product Information

Material Number:	553399
Size:	0.5 mg
Concentration:	0.5 mg/ml
Clone:	R2-40
Immunogen:	Pooled Mouse Ig
Isotype:	Rat (LOU) IgG1, κ
Reactivity:	QC Testing: Mouse
Storage Buffer:	Aqueous buffered solution containing $\leq 0.09\%$ sodium azide.

Description

The R2-40 antibody recognizes a common epitope, probably located in the CH1 domain, shared by mouse IgG2a, and IgG2b, of *Igh-Ca* and *Igh-Cb* haplotypes. It does not react with other Ig isotypes.

This antibody is routinely tested by flow cytometric analysis. Other applications were tested at BD Biosciences Pharmingen during antibody development only or reported in the literature.



Detection of intracellular mouse IgG2a/2b in an antibody-secreting hybridoma cell line. Cells were fixed, permeabilized, and stained according to the method described below using FITC-conjugated R2-40 mAb (solid line, Cat. No. 553399) or the matched isotype control, FITC-conjugated R3-34 mAb (dotted line, Cat. No. 554684). Flow cytometry was performed on a FACSCalibur™ flow cytometry system.

Preparation and Storage

The monoclonal antibody was purified from tissue culture supernatant or ascites by affinity chromatography.

The antibody was conjugated with FITC under optimum conditions, and unreacted FITC was removed.

Store undiluted at 4° C and protected from prolonged exposure to light. Do not freeze.

Application Notes

Application

Flow cytometry	Routinely Tested
Intracellular staining (flow cytometry)	Tested During Development

Recommended Assay Procedure:

FITC-conjugated R2-40 mAb may be used as a primary or secondary reagent in immunofluorescent staining.

IMMUNOFLUORESCENT STAINING OF INTRACELLULAR IMMUNOGLOBULIN (Ig) PROTOCOL

1. Prepare a single-cell suspension and determine cell number.
2. Suspend cells in staining buffer (PBS + 2% FBS + 0.1% Sodium Azide) at 2×10^7 cells/ml and transfer to U-bottom microwell plates in 50 μ l/well for immunofluorescent staining.

BD Biosciences

www.bdbiosciences.com

United States 877.232.8995 Canada 888.259.0187 Europe 32.53.720.550 Japan 0120.8555.90 Asia Pacific 65.6861.0633 Latin America/Caribbean 55.11.5185.9995

For country-specific contact information, visit www.bdbiosciences.com/how_to_order/

Conditions: The information disclosed herein is not to be construed as a recommendation to use the above product in violation of any patents. BD Biosciences will not be held responsible for patent infringement or other violations that may occur with the use of our products. Purchase does not include or carry any right to resell or transfer this product either as a stand-alone product or as a component of another product. Any use of this product other than the permitted use without the express written authorization of Becton Dickinson and Company is strictly prohibited.

For Research Use Only. Not for use in diagnostic or therapeutic procedures. Not for resale.

BD, BD Logo and all other trademarks are the property of Becton, Dickinson and Company. ©2007 BD



Note: The BD Pharmingen™ Stain Buffer with FBS (Cat. No. 554656) is effective for use as a staining buffer in this protocol.

- Block Fcγ receptors by adding 0.2 μg of purified 2.4G2 antibody (Mouse BD Fc Block™ purified anti-mouse CD16/CD32 mAb 2.4G2) (Cat. No. 553141/553142) in 50 μl of staining buffer to each well.
- Incubate 5 minutes on ice.
- Add 200 μl of staining buffer/well and resuspend cells. Centrifuge at 250 × g for 5 minutes and aspirate supernatant.
- Block surface Ig with purified R2-40 mAb (Cat. no. 553397) by adding 1.0 μg per sample in 50 μl of staining buffer/well.

Note: Surface markers may be stained during this step as described in the "Immunofluorescent Staining of Mouse and Rat Leukocytes for Flow Cytometry" in the Technical Protocols section of our web site at http://www.bdbiosciences.com/pharmingen/protocols/Mouse_and_Rat_Leukocytes.shtml

- Incubate 15 minutes on ice.
- Wash 2x as described in Step 5.
- Resuspend cells in 100 μl of BD Cytofix/Cytoperm™ intracellular staining buffer (BD Cytofix/Cytoperm™ Kit, Cat. No. 554714) per well.
- Incubate 30 minutes at room temperature.
- Wash 2x with 200 μl of 1x Perm/Wash Buffer (provided in the BD Cytofix/Cytoperm Kit) per well. Centrifuge at 250 × g for 5 minutes and aspirate supernatant between washes.
- Stain intracellular Ig by adding ≤ 1 μg of FITC-conjugated R2-40 mAb in 50 μl of 1 × Perm/Wash Buffer/well.

Note: Other antibodies recommended for staining of intracellular markers may be added during this step as described in Step 12.

- Incubate for 30 minutes at room temperature.
- Wash 2x as described in Step 11.
- Resuspend and transfer samples in 100 μl of staining buffer to tubes appropriate for analysis with a flow cytometer. Bring volume in each tube to 400 μl with staining buffer.
- Analyze samples on a flow cytometer.

Suggested Companion Products

Catalog Number	Name	Size	Clone
554684	FITC Rat IgG1, κ Isotype Control	0.1 mg	R3-34
554656	Stain Buffer (FBS)	500 ml	(none)
553141	Purified Rat Anti-Mouse CD16/CD32 (Mouse BD Fc Block™)	0.1 mg	2.4G2
553397	Purified Rat Anti-Mouse IgG2a/2b	0.5 mg	R2-40
554714	BD Cytofix/Cytoperm Fixation/Permeabilization Kit	250 tests	(none)

Product Notices

- Since applications vary, each investigator should titrate the reagent to obtain optimal results.
- Please refer to www.bdbiosciences.com/pharmingen/protocols for technical protocols.
- Caution: Sodium azide yields highly toxic hydrazoic acid under acidic conditions. Dilute azide compounds in running water before discarding to avoid accumulation of potentially explosive deposits in plumbing.

BD Biosciences

www.bdbiosciences.com

United States 877.232.8995 Canada 888.259.0187 Europe 32.53.720.550 Japan 0120.8555.90 Asia Pacific 65.6861.0633 Latin America/Caribbean 55.11.5185.9995

For country-specific contact information, visit www.bdbiosciences.com/how_to_order/

Conditions: The information disclosed herein is not to be construed as a recommendation to use the above product in violation of any patents. BD Biosciences will not be held responsible for patent infringement or other violations that may occur with the use of our products. Purchase does not include or carry any right to resell or transfer this product either as a stand-alone product or as a component of another product. Any use of this product other than the permitted use without the express written authorization of Becton Dickinson and Company is strictly prohibited.

For Research Use Only. Not for use in diagnostic or therapeutic procedures. Not for resale.

BD, BD Logo and all other trademarks are the property of Becton, Dickinson and Company. ©2007 BD

