

Technical Data Sheet

Purified Mouse Anti-human Invariant NK T Cell

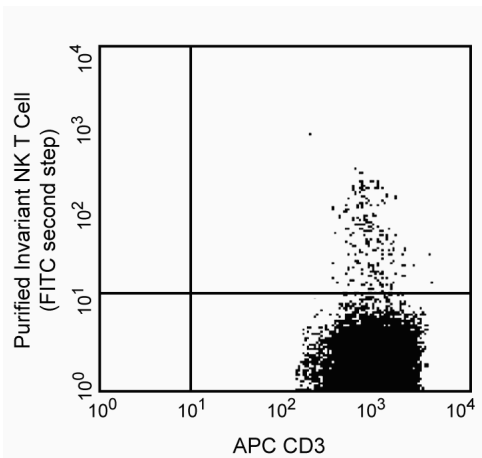
Product Information

Material Number:	552824
Size:	0.1 mg
Concentration:	0.5 mg/ml
Clone:	6B11
Isotype:	Mouse IgG1, κ
Reactivity:	QC Testing: Human
Workshop:	NA
Storage Buffer:	Aqueous buffered solution containing ≤0.09% sodium azide.

Description

Monoclonal antibody 6B11 reacts with a unique determinant in the CDR3 region of the invariant (Vα24-JαQ) TCR chain. Thus 6B11 identifies a subset of all Vα24 positive T cells. The binding of the PE-conjugate of 6B11 can be partially blocked by other antibodies specific for Vα24 (BD Biosciences Pharmingen, data not shown). This invariant chain is expressed on invariant NK T cells, which are a small subset of T lymphocytes that also express other NK cell molecules such as CD161. Invariant NK T cells have been reported to play an immunoregulatory role. The Vα24-JαQ interacts with the CD1d protein. Invariant NK T cells can be specifically activated by CD1d-presented antigen resulting in rapid production of IL-4 and IFN (also known as IFN-γ). Studies of NK T cells describe their role in anti-tumor immunity and autoimmunity.

This antibody is routinely tested by flow cytometric analysis. Other applications were tested at BD Biosciences Pharmingen during antibody development only or reported in the literature.



Profile of anti-invariant NK T Cell (clone 6B11) reactivity on peripheral blood CD3+ lymphocytes analyzed by flow cytometry. Second step staining with Cat. No. 555988.

Preparation and Storage

The monoclonal antibody was purified from tissue culture supernatant or ascites by affinity chromatography.

Store undiluted at 4° C.

Application Notes

Application

Flow cytometry	Routinely Tested
----------------	------------------

BD Biosciences

bdbiosciences.com				
United States	Canada	Europe	Japan	Asia Pacific
877.232.8995	888.259.0187	32.53.720.550	0120.8555.90	65.6861.0633
Latin America/Caribbean				
55.11.5185.9995				

For country-specific contact information, visit bdbiosciences.com/how_to_order/

Conditions: The information disclosed herein is not to be construed as a recommendation to use the above product in violation of any patents. BD Biosciences will not be held responsible for patent infringement or other violations that may occur with the use of our products. Purchase does not include or carry any right to resell or transfer this product either as a stand-alone product or as a component of another product. Any use of this product other than the permitted use without the express written authorization of Becton Dickinson and Company is strictly prohibited.

For Research Use Only. Not for use in diagnostic or therapeutic procedures. Not for resale.

BD, BD Logo and all other trademarks are the property of Becton, Dickinson and Company. ©2006 BD



Suggested Companion Products

Catalog Number	Name	Size	Clone
555746	Purified Mouse IgG1, κ Isotype Control	0.1 mg	MOPC-21
555988	FITC Goat Anti-Mouse IgG/IgM	0.5 mg	Polyclonal

Product Notices

1. Since applications vary, each investigator should titrate the reagent to obtain optimal results.
2. Please refer to www.bdbiosciences.com/pharmingen/protocols for technical protocols.
3. Caution: Sodium azide yields highly toxic hydrazoic acid under acidic conditions. Dilute azide compounds in running water before discarding to avoid accumulation of potentially explosive deposits in plumbing.

References

Exley MA, Tahir SM, Cheng O, et al. A major fraction of human bone marrow lymphocytes are Th2-like CD1d-reactive T cells that can suppress mixed lymphocyte responses. *J Immunol.* 2001; 167(10):5531-5534.(Biology)

Illes Z, Kondo T, Newcombe J, Oka N, Tabira T, Yamamura T. Differential expression of NK T cell V alpha 24J alpha Q invariant TCR chain in the lesions of multiple sclerosis and chronic inflammatory demyelinating polyneuropathy. *J Immunol.* 2000; 164(8):4375-4381.(Biology)

Tahir SM, Cheng O, Shaulov A, et al. Loss of IFN-gamma production by invariant NK T cells in advanced cancer. *J Immunol.* 2001; 167(7):4046-4050.(Biology)