

Technical Data Sheet

Biotin Rat Anti-Mouse CXCR5

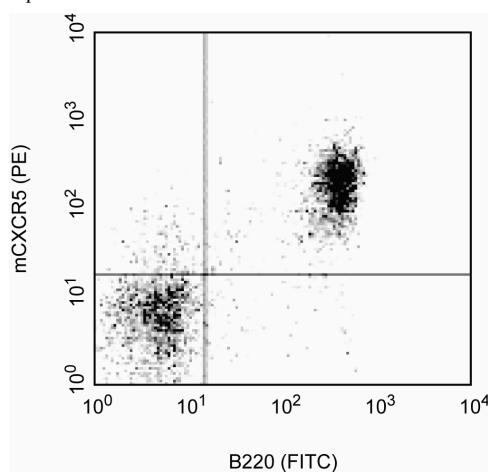
Product Information

Material Number:	551960
Size:	0.1 mg
Concentration:	0.5 mg/ml
Clone:	2G8
Immunogen:	Mouse CXCR5
Isotype:	Rat IgG2a, κ
Reactivity:	QC Testing: Mouse
Storage Buffer:	Aqueous buffered solution containing $\leq 0.09\%$ sodium azide.

Description

The monoclonal antibody 2G8 reacts with the mouse CXC chemokine receptor, CXCR5. CXCR5 (*a.k.a.* BLR1, NLR and MDR15), a seven-transmembrane, G-protein-coupled receptor, is the specific receptor for CXC chemokines, CXCL13/BLC/BCA-1. The expression of CXCR5 has been detected in spleen, lymph nodes, tonsils, brain, bone marrow, T cells, B cells, cerebrum, cerebellum, hippocampus and pituitary. In mouse spleen, CXCR5 was strictly expressed by mature B cells and a small subset of T lymphocytes. The immunogen used to generate 2G8 hybridoma was a recombinant protein containing N-terminal amino acids of mouse CXCR5 (GST-NmBLR1).

This antibody is routinely tested by flow cytometric analysis. Other applications were tested at BD Biosciences Pharmingen during antibody development only or reported in the literature.



Detection of CXCR5 expression on mouse splenocytes by biotinylated 2G8. Mouse splenocytes were stained with 1.0 μ g/test of biotinylated 2G8, Streptavidin-PE (Cat. No. 554061) and anti-mouse CD45R/B220-FITC (Cat. No. 553088). The data reflects gating on lymphocytes, based on forward and side scattered light signals. The level of nonspecific staining was assessed by using biotinylated rat IgG2a (cat. No. 553928) as isotype control. The quadrant markers for the bivariate dot plots were set based on the isotype control.

Preparation and Storage

The monoclonal antibody was purified from tissue culture supernatant or ascites by affinity chromatography.

The antibody was conjugated with biotin under optimum conditions, and unreacted biotin was removed.

Store undiluted at 4° C and protected from prolonged exposure to light. Do not freeze.

Application Notes

Application

Flow cytometry	Routinely Tested
----------------	------------------

Suggested Companion Products

Catalog Number	Name	Size	Clone
554061	PE Streptavidin	0.5 mg	(none)
553928	Biotin Rat IgG2a, κ Isotype Control	0.25 mg	R35-95

BD Biosciences

bdbiosciences.com

United States 877.232.8995 Canada 888.259.0187 Europe 32.53.720.550 Japan 0120.8555.90 Asia Pacific 65.6861.0633 Latin America/Caribbean 55.11.5185.9995

For country-specific contact information, visit bdbiosciences.com/how_to_order/

Conditions: The information disclosed herein is not to be construed as a recommendation to use the above product in violation of any patents. BD Biosciences will not be held responsible for patent infringement or other violations that may occur with the use of our products. Purchase does not include or carry any right to resell or transfer this product either as a stand-alone product or as a component of another product. Any use of this product other than the permitted use without the express written authorization of Becton Dickinson and Company is strictly prohibited.

For Research Use Only. Not for use in diagnostic or therapeutic procedures. Not for resale.

BD, BD Logo and all other trademarks are the property of Becton, Dickinson and Company. ©2006 BD



BD

BD Biosciences

Product Notices

1. Since applications vary, each investigator should titrate the reagent to obtain optimal results.
2. Please refer to www.bdbiosciences.com/pharming/en/protocols for technical protocols.
3. Caution: Sodium azide yields highly toxic hydrazoic acid under acidic conditions. Dilute azide compounds in running water before discarding to avoid accumulation of potentially explosive deposits in plumbing.

References

- Barella L, Loetscher M, Tobler A, Baggiolini M, Moser B. Sequence variation of a novel heptahelical leucocyte receptor through alternative transcript formation. *Biochem J*. 1995; 309(3):773-779.(Biology)
- Dobner T, Wolf I, Emrich T, Lipp M.. Differentiation-specific expression of a novel G protein-coupled receptor from Burkitt's lymphoma. *Eur J Immunol*. 1992; 22(11):2795-2799.(Biology)
- Forster R, Mattis AE, Kremmer E, Wolf E, Brem G, Lipp M. A putative chemokine receptor, BLR1, directs B cell migration to defined lymphoid organs and specific anatomic compartments of the spleen. *Cell*. 1996; 87(6):1037-1047.(Immunogen)
- Gunn MD, Ngo VN, Ansel KM, Ekland EH, Cyster JG, Williams LT. A B-cell-homing chemokine made in lymphoid follicles activates Burkitt's lymphoma receptor-1. *Nature*. 1998; 391(6669):799-803.(Biology)
- Kaiser E, Forster R, Wolf I, Ebensperger C, Kuehl WM, Lipp M. The G protein-coupled receptor BLR1 is involved in murine B cell differentiation and is also expressed in neuronal tissues. *Eur J Immunol*. 1993; 23(10):2532-2539.(Biology)
- Kouba M, Vanetti M, Wang X, Schafer M, Holtt V. Cloning of a novel putative G-protein-coupled receptor (NLR) which is expressed in neuronal and lymphatic tissue. *FEBS Lett*. 1993; 321(2-3):173-178.(Biology)
- Legler DF, Loetscher M, Roos RS, Clark-Lewis I, Baggiolini M, Moser B. B cell-attracting chemokine 1, a human CXC chemokine expressed in lymphoid tissues, selectively attracts B lymphocytes via BLR1/CXCR5. *J Exp Med*. 1998; 187(4):655-660.(Biology)