

Technical Data Sheet

PE Rat IgG2a, κ Isotype Control

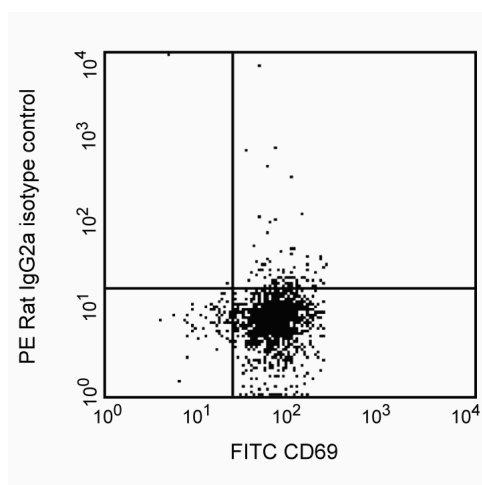
Product Information

Material Number:	551799
Size:	50 tests
Vol. per Test:	20 µl
Clone:	R35-95
Immunogen:	Mouse Pooled Immunoglobulin
Isotype:	Rat (LOU) IgG2a, κ
Storage Buffer:	Aqueous buffered solution containing BSA and ≤0.09% sodium azide.

Description

The R35-95 hybridoma was generated by hybridization of Y3 myeloma cells with spleen cells from LOU rats immunized with mouse immunoglobulins. The R35-95 hybridoma produces rat IgG2a, κ immunoglobulin that has no measurable reactivity with mouse immunoglobulins. The R35-95 immunoglobulin was selected as an isotype control following screening for low background binding on a variety of mouse and human tissues.

This reagent has been used as an isotype control in immunophenotypic studies with baboon, rhesus or cynomolgus peripheral blood cells.



Profile of PMA-stimulated (24 hours) permeabilized peripheral blood lymphocytes of Rhesus macaque monkey (macaca mulatta) analyzed by flow cytometry

Preparation and Storage

The monoclonal antibody was purified from tissue culture supernatant or ascites by affinity chromatography.

The antibody was conjugated with R-PE under optimum conditions, and unconjugated antibody and free PE were removed.

Store undiluted at 4°C and protected from prolonged exposure to light. Do not freeze.

Application Notes

Application

Intracellular staining (flow cytometry)	Routinely Tested
Isotype control	Routinely Tested

Recommended Assay Procedure:

An isotype control should be used at the same concentration as the antibody of interest (e.g., ≤ 1 µg/million cells for flow cytometry).

Product Notices

- This reagent has been pre-diluted for use at the recommended Volume per Test. We typically use 1×10^6 cells in a 100-µl experimental sample (a test).

BD Biosciences

bdbiosciences.com

United States 877.232.8995 Canada 888.268.5430 Europe 32.53.720.550 Japan 0120.8555.90 Asia Pacific 65.6861.0633 Latin America/Caribbean 0800.771.7157

For country-specific contact information, visit bdbiosciences.com/how_to_order/

Conditions: The information disclosed herein is not to be construed as a recommendation to use the above product in violation of any patents. BD Biosciences will not be held responsible for patent infringement or other violations that may occur with the use of our products. Purchase does not include or carry any right to resell or transfer this product either as a stand-alone product or as a component of another product. Any use of this product other than the permitted use without the express written authorization of Becton Dickinson and Company is strictly prohibited.

For Research Use Only. Not for use in diagnostic or therapeutic procedures. Not for resale.

BD, BD Logo and all other trademarks are the property of Becton, Dickinson and Company. ©2011 BD



2. Since applications vary, each investigator should titrate the reagent to obtain optimal results.
3. Please refer to www.bdbiosciences.com/pharmingen/protocols for technical protocols.
4. For fluorochrome spectra and suitable instrument settings, please refer to our Fluorochrome Web Page at www.bdbiosciences.com/colors.
5. Caution: Sodium azide yields highly toxic hydrazoic acid under acidic conditions. Dilute azide compounds in running water before discarding to avoid accumulation of potentially explosive deposits in plumbing.
6. Source of all serum proteins is from USDA inspected abattoirs located in the United States.