

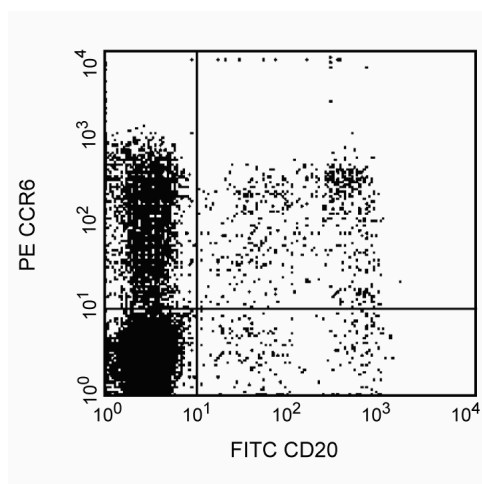
Technical Data Sheet

PE Mouse Anti-Human CD196 (CCR6)**Product Information**

Material Number:	551773
Alternate Name:	BN-1; C-C chemokine receptor type 6; C-C CKR-6; CC-CKR-6; CCR-6; CD196
Size:	50 tests
Vol. per Test:	20 µl
Clone:	11A9
Isotype:	Mouse IgG1, κ
Reactivity:	Human
	QC Testing: Cynomolgus or Rhesus
Storage Buffer:	Aqueous buffered solution containing BSA and ≤0.09% sodium azide.

Description

Reacts with chemokine receptor CCR6. CCR6 is a seven transmembrane g-protein coupled receptor expressed on peripheral blood lymphocytes and in lymphoid tissues including lymph nodes, spleen, thymus, and appendix. It is a receptor for the CC chemokine MIP-3a/LARC. Clone 11A9 cross-reacts with peripheral blood lymphocytes of rhesus and cynomolgus macaque monkeys. The staining pattern observed shows less reactivity on CD20+ cells than seen on normal human peripheral blood lymphocytes. CCR6 had been clustered as CD196 in the VIIIth HLDA workshop.



Profile of peripheral blood lymphocytes of Rhesus macaque monkey (macaca mulatta) analyzed by flow cytometry

Preparation and Storage

The monoclonal antibody was purified from tissue culture supernatant or ascites by affinity chromatography.

The antibody was conjugated with R-PE under optimum conditions, and unconjugated antibody and free PE were removed.

Store undiluted at 4°C and protected from prolonged exposure to light. Do not freeze.

Application Notes**Application**

Flow cytometry

Routinely Tested

Suggested Companion Products

Catalog Number	Name	Size	Clone
556650	PE Mouse IgG1, κ Isotype Control	50 tests	MOPC-21

Product Notices

1. This reagent has been pre-diluted for use at the recommended Volume per Test. We typically use 1×10^6 cells in a 100-µl experimental sample (a test).
2. Since applications vary, each investigator should titrate the reagent to obtain optimal results.

BD Biosciences

bdbiosciences.com

United States	Canada	Europe	Japan	Asia Pacific	Latin America/Caribbean
877.232.8995	888.268.5430	32.53.720.550	0120.8555.90	65.6861.0633	0800.771.7157

For country-specific contact information, visit bdbiosciences.com/how_to_order/

Conditions: The information disclosed herein is not to be construed as a recommendation to use the above product in violation of any patents. BD Biosciences will not be held responsible for patent infringement or other violations that may occur with the use of our products. Purchase does not include or carry any right to resell or transfer this product either as a stand-alone product or as a component of another product. Any use of this product other than the permitted use without the express written authorization of Becton Dickinson and Company is strictly prohibited.

For Research Use Only. Not for use in diagnostic or therapeutic procedures. Not for resale.

BD, BD Logo and all other trademarks are the property of Becton, Dickinson and Company. ©2011 BD



3. Please refer to www.bdbiosciences.com/pharming/en/protocols for technical protocols.
4. For fluorochrome spectra and suitable instrument settings, please refer to our Fluorochrome Web Page at www.bdbiosciences.com/colors.
5. Caution: Sodium azide yields highly toxic hydrazoic acid under acidic conditions. Dilute azide compounds in running water before discarding to avoid accumulation of potentially explosive deposits in plumbing.
6. Source of all serum proteins is from USDA inspected abattoirs located in the United States.

References

Baba M, Imai T, Nishimura M, et al. Identification of CCR6, the specific receptor for a novel lymphocyte-directed CC chemokine LARC. *J Biol Chem.* 1997; 272(23):14893-14898. (Biology)

Greaves DR, Wang W, Dairaghi DJ, et al. CCR6, a CC chemokine receptor that interacts with macrophage inflammatory protein 3alpha and is highly expressed in human dendritic cells. *J Exp Med.* 1997; 186(6):837-844. (Biology)