

Technical Data Sheet

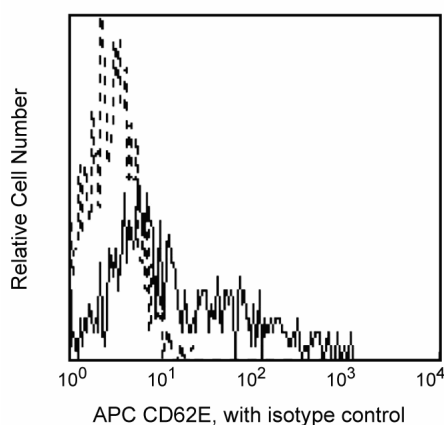
APC Mouse Anti-Human CD62E

Product Information

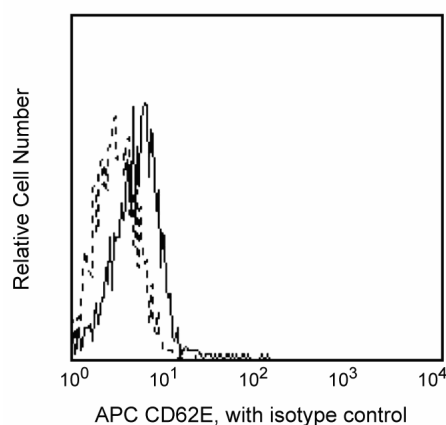
Material Number:	551144
Alternate Name:	E-Selectin
Size:	100 tests
Vol. per Test:	20 µl
Clone:	68-5H11
Isotype:	Mouse IgG1, κ
Reactivity:	QC Testing: Human
Workshop:	VI A090
Storage Buffer:	Aqueous buffered solution containing BSA and ≤0.09% sodium azide.

Description

Reacts with the 97-115 kDa cell surface glycoprotein, E-selectin, also known as endothelial-leukocyte adhesion molecule-1 (ELAM-1). E-selectin is thought to be involved in the initial interaction of neutrophils with inflamed endothelium. CD62E is expressed on cytokine-stimulated endothelium, but in minimal amounts on unstimulated endothelium. The adhesion between endothelial E-selectin molecules and a carbohydrate ligand on neutrophils is inhibited by the mAb 68-5H11.



Profile of TNF-α activated human umbilical vein endothelial cells (HUVEC) analyzed by flow cytometry



Profile of resting HUVEC analyzed by flow cytometry

Preparation and Storage

The monoclonal antibody was purified from tissue culture supernatant or ascites by affinity chromatography.

The antibody was conjugated to APC under optimum conditions, and unconjugated antibody and free APC were removed.

Store undiluted at 4°C and protected from prolonged exposure to light. Do not freeze.

Application Notes

Application

Flow cytometry	Routinely Tested
----------------	------------------

Suggested Companion Products

Catalog Number	Name	Size	Clone
555751	APC Mouse IgG1, κ Isotype Control	100 tests	MOPC-21

Product Notices

1. This reagent has been pre-diluted for use at the recommended Volume per Test. We typically use 1×10^6 cells in a 100-µl experimental sample (a test).
2. Since applications vary, each investigator should titrate the reagent to obtain optimal results.
3. Please refer to www.bdbiosciences.com/pharmingen/protocols for technical protocols.
4. For fluorochrome spectra and suitable instrument settings, please refer to our Fluorochrome Web Page at www.bdbiosciences.com/colors.

BD Biosciences

bdbiosciences.com

United States	Canada	Europe	Japan	Asia Pacific	Latin America/Caribbean
877.232.8995	888.268.5430	32.53.720.550	0120.8555.90	65.6861.0633	0800.771.7157

For country-specific contact information, visit bdbiosciences.com/how_to_order/

Conditions: The information disclosed herein is not to be construed as a recommendation to use the above product in violation of any patents. BD Biosciences will not be held responsible for patent infringement or other violations that may occur with the use of our products. Purchase does not include or carry any right to resell or transfer this product either as a stand-alone product or as a component of another product. Any use of this product other than the permitted use without the express written authorization of Becton Dickinson and Company is strictly prohibited.

For Research Use Only. Not for use in diagnostic or therapeutic procedures. Not for resale.

BD, BD Logo and all other trademarks are the property of Becton, Dickinson and Company. ©2011 BD



5. This APC-conjugated reagent can be used in any flow cytometer equipped with a dye, HeNe, or red diode laser.
6. Caution: Sodium azide yields highly toxic hydrazoic acid under acidic conditions. Dilute azide compounds in running water before discarding to avoid accumulation of potentially explosive deposits in plumbing.
7. Source of all serum proteins is from USDA inspected abattoirs located in the United States.

References

- Bevilacqua MP, Stengelin S, Gimbrone MA Jr, Seed B. Endothelial leukocyte adhesion molecule 1: an inducible receptor for neutrophils related to complement regulatory proteins and lectins. *Science*. 1989; 243(4895):1160-1165. (Biology)
- Kishimoto T, von dem Borne AEG, Goyert SM, et al., ed. *Leucocyte Typing VI: White Cell Differentiation Antigens*. London: Garland Publishing; 1997. (Clone-specific)
- Phillips ML, Nudelman E, Gaeta FC, et al. ELAM-1 mediates cell adhesion by recognition of a carbohydrate ligand, sialyl-Lex. *Science*. 1990; 250(4984):1130-1132. (Biology)
- Schlossman S, Boumell L, et al, ed. *Leucocyte Typing V*. New York: Oxford University Press; 1995. (Biology)