

## Technical Data Sheet

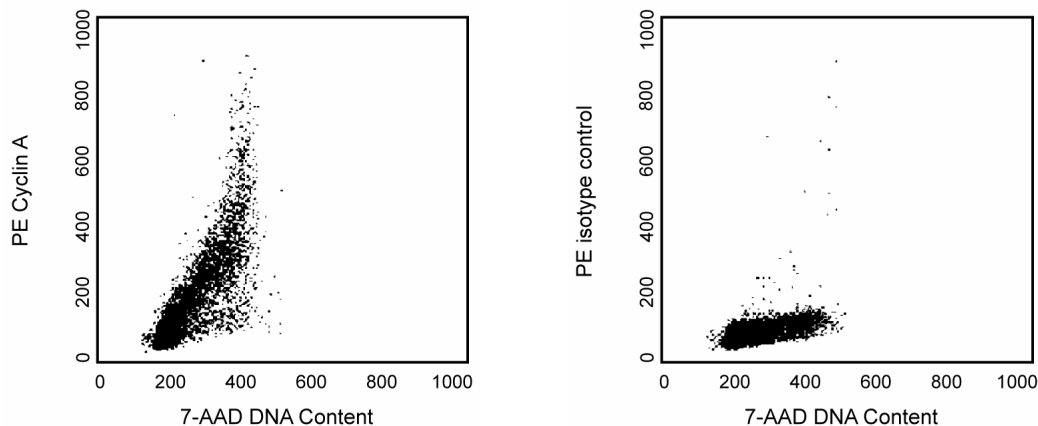
## PE Mouse Anti-Human Cyclin A Set

## Product Information

<b>Material Number:</b>	<b>550913</b>
<b>Size:</b>	100 tests
<b>Reactivity:</b>	QC Testing: Human
<b>Component:</b>	<b>51-13825X</b>
<b>Description:</b>	PE Mouse Anti-Human Cyclin A
<b>Size:</b>	100 tests (1 ea)
<b>Vol. per Test:</b>	20 µl
<b>Clone Name:</b>	BF683
<b>Immunogen:</b>	Human Cyclin A Recombinant Protein
<b>Isotype:</b>	Mouse IgE
<b>Storage Buffer:</b>	Aqueous buffered solution containing BSA and ≤0.09% sodium azide.
<b>Component:</b>	<b>51-13835X</b>
<b>Description:</b>	PE Mouse IgE Isotype Control
<b>Size:</b>	100 tests (1 ea)
<b>Vol. per Test:</b>	20 µl
<b>Clone Name:</b>	IgE-3
<b>Isotype:</b>	Mouse (BALB/c) IgE, κ
<b>Storage Buffer:</b>	Aqueous buffered solution containing BSA and ≤0.09% sodium azide.

## Description

Cyclins and cyclin-dependent kinases (cdks) have been shown to be subunits of cell cycle dependent protein kinases that regulate key events during the progression of the cell cycle and are highly conserved. Specific substrates for cdk/cyclin kinases include nuclear lamins, nucleolin, RNA polymerase II, retinoblastoma protein, SV40 large T antigen, p53 tumor suppressor protein, and the oncogene kinases c-src and c-abl. Cyclin A has been shown to be mainly active during S phase of the cell cycle. Cyclin A and cdk2 are thought to function in the control of the cell cycle. They bind to one another forming an active kinase that resembles the cell cycle-regulating MPF (maturation promoting factor) complex containing cdc2 (cdk1) and cyclin B1. Cyclin A forms a stable complex with the adenovirus oncoproteins E1A. Human cyclin A migrates with an apparent molecular weight of ~60 kDa by SDS/PAGE. Clone BF683 reacts with human cyclin A and reportedly does not cross-react to mouse, mink, or rat cyclin A.



**Flow cytometric analysis for cyclin A in MOLT-4 cells (Human T-lymphoblasts; ATCC CRL-1582) analyzed on a FACSCalibur instrument.** Cells were fixed, permeabilized and stained with the PE mouse anti-human cyclin A antibody (left figure) (clone BF683, component no. 51-13825X) or with the PE mouse IgE isotype control (right figure) (clone IgE-3, component no. 51-13835X). Cells were counterstained with 7-AAD to measure for DNA content.

## BD Biosciences

bdbiosciences.com

United States	Canada	Europe	Japan	Asia Pacific	Latin America/Caribbean
877.232.8995	888.259.0187	32.53.720.550	0120.8555.90	65.6861.0633	55.11.5185.9995

For country-specific contact information, visit [bdbiosciences.com/how\\_to\\_order/](http://bdbiosciences.com/how_to_order/)

Conditions: The information disclosed herein is not to be construed as a recommendation to use the above product in violation of any patents. BD Biosciences will not be held responsible for patent infringement or other violations that may occur with the use of our products. Purchase does not include or carry any right to resell or transfer this product either as a stand-alone product or as a component of another product. Any use of this product other than the permitted use without the express written authorization of Becton Dickinson and Company is strictly prohibited.

For Research Use Only. Not for use in diagnostic or therapeutic procedures. Not for resale.

BD, BD Logo and all other trademarks are the property of Becton, Dickinson and Company. ©2008 BD



## Preparation and Storage

Store undiluted at 4°C and protected from prolonged exposure to light. Do not freeze.

The monoclonal antibody was purified from tissue culture supernatant or ascites by affinity chromatography.

The antibody was conjugated with R-PE under optimum conditions, and unconjugated antibody and free PE were removed.

## Application Notes

### Application

Intracellular staining (flow cytometry)	Routinely Tested
-----------------------------------------	------------------

## Suggested Companion Products

Catalog Number	Name	Size	Clone
559925	7-AAD	2.0 ml	(none)
554174	Purified Mouse Anti-Human Cyclin A	0.1 mg	BF683
554107	FITC Mouse Anti-Human Cyclin A Set	100 tests	(none)

## Product Notices

1. This reagent has been pre-diluted for use at the recommended Volume per Test. We typically use  $1 \times 10^6$  cells in a 100- $\mu$ l experimental sample (a test).
2. Source of all serum proteins is from USDA inspected abattoirs located in the United States.
3. Caution: Sodium azide yields highly toxic hydrazoic acid under acidic conditions. Dilute azide compounds in running water before discarding to avoid accumulation of potentially explosive deposits in plumbing.
4. For fluorochrome spectra and suitable instrument settings, please refer to our Fluorochrome Web Page at [wwwbdbiosciences.com/colors](http://wwwbdbiosciences.com/colors).
5. Please refer to [wwwbdbiosciences.com/pharmingen/protocols](http://wwwbdbiosciences.com/pharmingen/protocols) for technical protocols.

## References

- Cao L, Faha B, Dembski M, Tsai LH, Harlow E, Dyson N. Independent binding of the retinoblastoma protein and p107 to the transcription factor E2F. *Nature*. 1992; 355(6356):176-179. (Biology: Immunoprecipitation, Western blot)
- Faha B, Ewen ME, Tsai LH, Livingston DM, Harlow E. Interaction between human cyclin A and adenovirus E1A-associated p107 protein. *Science*. 1992; 255(5040):87-90. (Biology: Immunoprecipitation, In vitro kinase assay, Western blot)
- Faha B, Harlow E, Lees E. The adenovirus E1A-associated kinase consists of cyclin E-p33cdk2 and cyclin A-p33cdk2. *J Virol*. 1993; 67(5):2456-2465. (Biology: Immunoprecipitation, In vitro kinase assay)
- Gong J, Bhatia U, Traganos F, Darzynkiewicz Z. Expression of cyclins A, D2 and D3 in individual normal mitogen stimulated lymphocytes and in MOLT-4 leukemic cells analyzed by multiparameter flow cytometry. *Leukemia*. 1995; 9(5):893-899. (Biology: Flow cytometry)
- Gong J, Traganos F, Darzynkiewicz Z. Discrimination of G2 and mitotic cells by flow cytometry based on different expression of cyclins A and B1. *Exp Cell Res*. 1995; 220(1):226-231. (Biology: Flow cytometry, Western blot)
- Sherr CJ. Mammalian G1 cyclins. *Cell*. 1993; 73(6):1059-1065. (Biology)