

Technical Data Sheet

APC Mouse Anti-Human CD11a

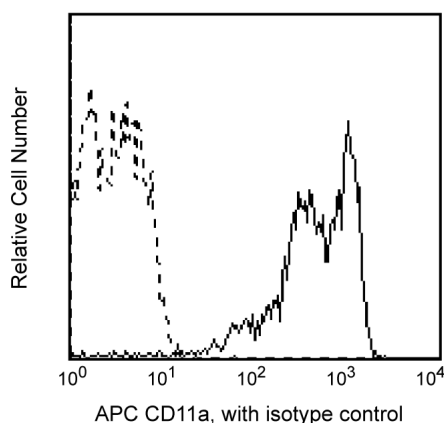
Product Information

Material Number:	550852
Alternate Name:	LFA-1 α ; Lymphocyte (Leukocyte) function-associated antigen 1 α chain; ITGAL
Size:	50 tests
Vol. per Test:	20 μ l
Clone:	HI111
Isotype:	Mouse IgG1, κ
Reactivity:	Human
Workshop:	QC Testing: Baboon or Cynomolgus or Rhesus
Storage Buffer:	IV N231
	Aqueous buffered solution containing BSA and \leq 0.09% sodium azide.

Description

The HI111 monoclonal antibody specifically binds to the 180 kDa integrin α chain. This type I transmembrane glycoprotein associates with CD18 (integrin β 2) to form the heterodimeric glycoprotein CD11a/CD18. This heterodimer is also known as the lymphocyte (leukocytes) function associated antigen-1 (LFA-1) that is expressed on all leukocytes. LFA-1 is an adhesion molecule involved in lymphocyte and granulocyte functions. LFA-1 mediates adhesion of lymphoid cells to the vascular endothelium in association with its ligand, and the intracellular adhesion molecule-1 (ICAM-1), CD54. Other ligands are ICAM-2 (CD102) and ICAM-3 (CD50).

Clone HI111 also cross reacts with all leukocytes of baboon, and both rhesus and cynomolgus macaque monkeys. The distribution of leukocytes is similar to that observed with peripheral blood leukocytes from normal human donors, with the lymphocyte population also showing a bimodal staining pattern.



Profile of CD11a antibody on peripheral blood lymphocytes of rhesus macaque (*Macaca mulatta*) analyzed by flow cytometry

Preparation and Storage

The antibody was conjugated to APC under optimum conditions, and unconjugated antibody and free APC were removed.

The monoclonal antibody was purified from tissue culture supernatant or ascites by affinity chromatography.

Store undiluted at 4°C and protected from prolonged exposure to light. Do not freeze.

Application Notes

Application

Flow cytometry	Routinely Tested
----------------	------------------

Suggested Companion Products

Catalog Number	Name	Size	Clone
550854	APC Mouse IgG1 κ Isotype Control	50 tests	MOPC-21

Product Notices

- Since applications vary, each investigator should titrate the reagent to obtain optimal results.

BD Biosciences

bdbiosciences.com

United States	Canada	Europe	Japan	Asia Pacific	Latin America/Caribbean
877.232.8995	888.268.5430	32.53.720.550	0120.8555.90	65.6861.0633	0800.771.7157

For country-specific contact information, visit bdbiosciences.com/how_to_order/

Conditions: The information disclosed herein is not to be construed as a recommendation to use the above product in violation of any patents. BD Biosciences will not be held responsible for patent infringement or other violations that may occur with the use of our products. Purchase does not include or carry any right to resell or transfer this product either as a stand-alone product or as a component of another product. Any use of this product other than the permitted use without the express written authorization of Becton Dickinson and Company is strictly prohibited.

For Research Use Only. Not for use in diagnostic or therapeutic procedures. Not for resale.

BD, BD Logo and all other trademarks are the property of Becton, Dickinson and Company. ©2011 BD



2. This reagent has been pre-diluted for use at the recommended Volume per Test. We typically use 1×10^6 cells in a 100- μ l experimental sample (a test).
3. Please refer to www.bdbiosciences.com/pharming/en/protocols for technical protocols.
4. For fluorochrome spectra and suitable instrument settings, please refer to our Fluorochrome Web Page at www.bdbiosciences.com/colors.
5. Caution: Sodium azide yields highly toxic hydrazoic acid under acidic conditions. Dilute azide compounds in running water before discarding to avoid accumulation of potentially explosive deposits in plumbing.
6. Source of all serum proteins is from USDA inspected abattoirs located in the United States.

References

- Bochner BS, Lusinskas FW, Gimbrone MA Jr, et al. Adhesion of human basophils, eosinophils, and neutrophils to interleukin 1-activated human vascular endothelial cells: contributions of endothelial cell adhesion molecules. *J Exp Med.* 1991; 173(6):1553-1557. (Biology)
- Diamond MS, Staunton DE, de Fougerolles AR, et al. ICAM-1 (CD54): a counter-receptor for Mac-1 (CD11b/CD18). *J Cell Biol.* 1990; 111(6):3129-3139. (Biology)
- Dustin ML, Springer TA. Lymphocyte function-associated antigen-1 (LFA-1) interaction with intercellular adhesion molecule-1 (ICAM-1) is one of at least three mechanisms for lymphocyte adhesion to cultured endothelial cells. *J Cell Biol.* 1988; 107(1):321-331. (Biology)
- Inghirami G, Wiecek R, Zhu BY, Silber R, Dalla-Favera R, Knowles DM. Differential expression of LFA-1 molecules in non-Hodgkin's lymphoma and lymphoid leukemia. *Blood.* 1988; 72(4):1431-1434. (Biology)
- Knapp W, Dorken B, Rieber EP, et al, ed. *Leucocyte Typing IV*. New York: Oxford University Press; 1989:1-1208. (Clone-specific)
- Rothlein R, Dustin ML, Marlin SD, Springer TA. A human intercellular adhesion molecule (ICAM-1) distinct from LFA-1. *J Immunol.* 1986; 137(4):1270-1274. (Biology)
- Schnitzler N, Haase G, Podbielski A, Luticken R, Schweizer KG. A co-stimulatory signal through ICAM-beta2 integrin-binding potentiates neutrophil phagocytosis. *Nat Med.* 1999; 5(2):231-235. (Biology)
- Vallhonrat H, Williams WW, Cosimi AB, et al. In vivo generation of C4d, Bb, iC3b, and SC5b-9 after OKT3 administration in kidney and lung transplant recipients. *Transplantation* . 1999; 67(2):253-258. (Biology)