

Technical Data Sheet

PE Rat Anti-Human CD212

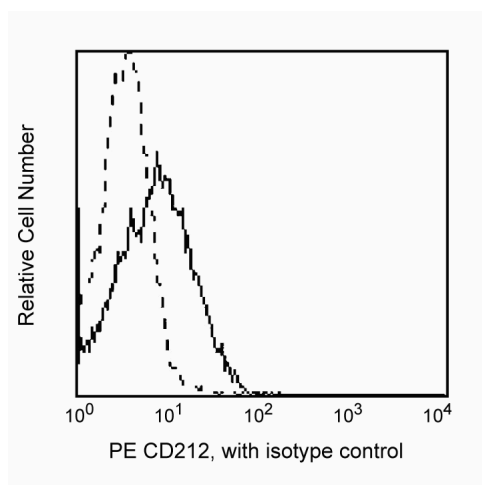
Product Information

Material Number:	550723
Alternate Name:	IL-12 receptor $\beta 2$ subunit
Size:	100 tests
Vol. per Test:	20 μ l
Clone:	2B6/12 β 2
Isotype:	Rat IgG2a, κ
Reactivity:	QC Testing: Human
Storage Buffer:	Aqueous buffered solution containing BSA and $\leq 0.09\%$ sodium azide.

Description

Reacts with IL-12R $\beta 2$ subunit, one of two subunits of IL-12R β . It is expressed on T cells and NK cells. IL-12R is a glycoprotein member of the hemopoietin receptor superfamily and is related to gp130, the granulocyte-colony stimulating factor (G-CSF) receptor and leukemia inhibitory factor (LIF). Reports indicate that both, IL-12R $\beta 1$ and IL-12R $\beta 2$ subunits together are capable of high affinity binding to IL-12. IL-12 is an immunomodulatory cytokine produced mainly by antigen presenting cells (APC) and plays a role in promoting Th1-type responses and cell mediated immunity. It stimulates proliferation of T cells and NK cells, enhances lytic activity of lymphokine activated (LAK) cells and CTL.

This antibody is routinely tested by flow cytometric analysis. Other applications were tested at BD Biosciences Pharmingen during antibody development only or reported in the literature.



Profile of CD3-stimulated peripheral blood mononuclear cells (3 days) analyzed by flow cytometry

Preparation and Storage

The monoclonal antibody was purified from tissue culture supernatant or ascites by affinity chromatography.

The antibody was conjugated with R-PE under optimum conditions, and unconjugated antibody and free PE were removed by gel filtration chromatography.

Store undiluted at 4° C and protected from prolonged exposure to light. Do not freeze.

Application Notes

Application

Flow cytometry	Routinely Tested
Fluorescence microscopy	Reported

BD Biosciences

www.bdbiosciences.com

United States	Canada	Europe	Japan	Asia Pacific	Latin America/Caribbean
877.232.8995	888.259.0187	32.53.720.550	0120.8555.90	65.6861.0633	55.11.5185.9995

For country-specific contact information, visit www.bdbiosciences.com/how_to_order/

Conditions: The information disclosed herein is not to be construed as a recommendation to use the above product in violation of any patents. BD Biosciences will not be held responsible for patent infringement or other violations that may occur with the use of our products. Purchase does not include or carry any right to resell or transfer this product either as a stand-alone product or as a component of another product. Any use of this product other than the permitted use without the express written authorization of Becton Dickinson and Company is strictly prohibited.

For Research Use Only. Not for use in diagnostic or therapeutic procedures. Not for resale.

BD, BD Logo and all other trademarks are the property of Becton, Dickinson and Company. ©2007 BD



Suggested Companion Products

Catalog Number	Name	Size	Clone
555844	PE Rat IgG2a, κ Isotype Control	100 tests	R35-95

Product Notices

1. This reagent has been pre-diluted for use at the recommended Volume per Test. We typically use 1 X 10⁶ cells in a 100- μ l experimental sample (a test).
2. Since applications vary, each investigator should titrate the reagent to obtain optimal results.
3. Please refer to www.bdbiosciences.com/pharming/en/protocols for technical protocols.
4. Caution: Sodium azide yields highly toxic hydrazoic acid under acidic conditions. Dilute azide compounds in running water before discarding to avoid accumulation of potentially explosive deposits in plumbing.
5. Source of all serum proteins is from USDA inspected abattoirs located in the United States.

References

Chizzonite R, Truitt T, Podlaski FJ, et al. IL-12: monoclonal antibodies specific for the 40-kDa subunit block receptor binding and biologic activity on activated human lymphoblasts. *J Immunol.* 1991; 147(5):1548-1556.(Biology)

Chua AO, Chizzonite R, Desai BB, et al. Expression cloning of a human IL-12 receptor component. A new member of the cytokine receptor superfamily with strong homology to gp130. *J Immunol.* 1994; 153(1):128-136.(Biology)

Presky DH, Minetti LJ, Gillesse S, et al. Analysis of the multiple interactions between IL-12 and the high affinity IL-12 receptor complex. *J Immunol.* 1998; 160(5):2174-2179.(Biology)

Wu CY, Warrier RR, Carvajal DM, et al. Biological function and distribution of human interleukin-12 receptor beta chain. *Eur J Immunol.* 1996; 26(2):345-350. (Biology)