

MEIS1/2 Antibody

✓ 100 µl
(10 western blots)



Orders ■ 877-616-CELL (2355)
orders@cellsignal.com
Support ■ 877-678-TECH (8324)
info@cellsignal.com
Web ■ www.cellsignal.com

New 09/13

For Research Use Only. Not For Use In Diagnostic Procedures.

Entrez Gene ID #4211, 4212
UniProt ID #000470, 014770

Applications W Transfected Only	Species Cross-Reactivity* H, (M)	Molecular Wt. 50, 70 kDa	Source Rabbit**
---------------------------------------	-------------------------------------	-----------------------------	--------------------

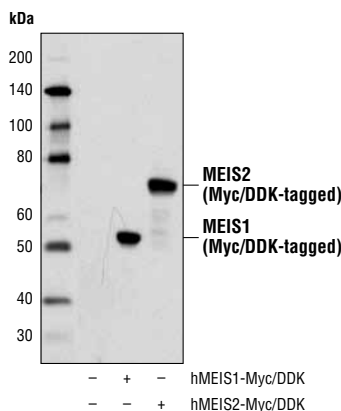
Background: Hox, Pbx, and Meis are families of transcription factors that bind DNA via their homeodomains. Members from each family form heterodimers to give rise to complexes with unique DNA binding specificities. Homeodomain containing proteins are frequently involved in normal developmental processes, but can also be associated with tumorigenic states (1). MEIS proteins belong to the TALE (Three Amino Acid Loop Extension) homeobox containing transcription factor family. MEIS1 has been associated with leukemogenesis and neuroblastoma (2,3) while MEIS2 is known to play an important role in the transcriptional program that is induced in normal pancreatic development (4) and cardiogenesis (5).

Specificity/Sensitivity: MEIS1/2 Antibody recognizes transfected levels of total MEIS1 and MEIS2 proteins.

Source/Purification: Polyclonal antibodies are produced by immunizing animals with a synthetic peptide corresponding to residues near the carboxy terminus of human MEIS1 protein. Antibodies are purified by protein A and peptide affinity chromatography.

Background References:

- (1) Eklund, E. (2011) *Crit Rev Oncog* 16, 65-76.
- (2) Wong, P. et al. (2007) *Genes Dev* 21, 2762-74.
- (3) Geerts, D. et al. (2003) *Cancer Lett* 197, 87-92.
- (4) Swift, G.H. et al. (1998) *Mol Cell Biol* 18, 5109-20.
- (5) Paige, S.L. et al. (2012) *Cell* 151, 221-32.



Western blot analysis of extracts from 293 cells, mock transfected (-) or transfected with constructs expressing Myc/DDK-tagged full-length human MEIS1 (hMEIS1-Myc/DDK; +) or MEIS2 (hMEIS2-Myc/DDK; +), using MEIS1/2 Antibody.

Storage: Supplied in 10 mM sodium HEPES (pH 7.5), 150 mM NaCl, 100 µg/ml BSA and 50% glycerol. Store at -20°C. Do not aliquot the antibody.

***Species cross-reactivity is determined by western blot.**

****Anti-rabbit secondary antibodies must be used to detect this antibody.**

Recommended Antibody Dilutions:

Western blotting 1:1000

For product specific protocols please see the web page for this product at www.cellsignal.com.

Please visit www.cellsignal.com for a complete listing of recommended companion products.

IMPORTANT: For western blots, incubate membrane with diluted antibody in 5% w/v BSA, 1X TBS, 0.1% Tween® 20 at 4°C with gentle shaking, overnight.

Tween® is a registered trademark of ICI Americas, Inc.

Applications Key: W—Western IP—Immunoprecipitation IHC—Immunohistochemistry ChIP—Chromatin Immunoprecipitation IF—Immunofluorescence F—Flow cytometry E-P—ELISA-Peptide
Species Cross-Reactivity Key: H—human M—mouse R—rat Hm—hamster Mk—monkey Mi—mink C—chicken Dm—D. melanogaster X—Xenopus Z—zebrafish B—bovine
Dg—dog Pg—pig Sc—S. cerevisiae Ce—C. elegans Hr—horse All—all species expected Species enclosed in parentheses are predicted to react based on 100% homology.