

# APBA2 (D8A6) Rabbit mAb



✓ 100 µl  
(10 western blots)

**Orders** ■ 877-616-CELL (2355)  
orders@cellsignal.com  
**Support** ■ 877-678-TECH (8324)  
info@cellsignal.com  
**Web** ■ www.cellsignal.com

New 06/13

**For Research Use Only. Not For Use In Diagnostic Procedures.**

**Entrez-Gene ID** #321  
**Swiss-Prot Acc.** #Q99767

Applications W, IP Endogenous	Species Cross-Reactivity* H, M, R	Molecular Wt. 135 kDa	Isotype Rabbit IgG**
-------------------------------------	--------------------------------------	--------------------------	-------------------------

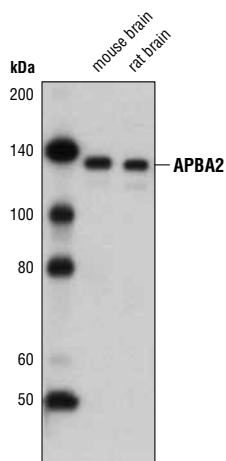
**Background:** Amyloid  $\beta$  A4 precursor protein-binding family A member 2 (APBA2) is a neuronal adaptor protein that interacts with the amyloid  $\beta$  precursor protein (APP) (1). The amyloid  $\beta$ -protein ( $A\beta$ ) is the principal component of amyloid plaques, a pathological hallmark of Alzheimer's disease (2). APBA2 has been shown to stabilize APP metabolism and suppress the secretion of  $A\beta$  (3). APBA2 mediates interaction between APP and the neural type I membrane protein Alcadin (Aic) by linking their cytoplasmic domains, thereby forming a tripartite complex of the three proteins in neurons (4).

**Specificity/Sensitivity:** APBA2 (D8A6) Rabbit mAb recognizes endogenous levels of total APBA2 protein.

**Source/Purification:** Monoclonal antibody is produced by immunizing animals with a synthetic peptide corresponding to residues surrounding Val23 of human APBA2 protein.

## Background References:

- (1) Sakuma, M. et al. (2009) *J Neurochem* 109, 465-75.
- (2) Saito, Y. et al. (2008) *J Biol Chem* 283, 35763-71.
- (3) Araki, Y. et al. (2003) *J Biol Chem* 278, 49448-58.
- (4) Sano, Y. et al. (2006) *J Biol Chem* 281, 37853-60.



Western blot analysis of extracts from mouse and rat brain using APBA2 (D8A6) Rabbit mAb.

**Storage:** Supplied in 10 mM sodium HEPES (pH 7.5), 150 mM NaCl, 100 µg/ml BSA, 50% glycerol and less than 0.02% sodium azide. Store at -20°C. Do not aliquot the antibody.

**\*Species cross-reactivity is determined by western blot.**

**\*\*Anti-rabbit secondary antibodies must be used to detect this antibody.**

## Recommended Antibody Dilutions:

Western blotting	1:1000
Immunoprecipitation	1:50

**For product specific protocols please see the web page for this product at [www.cellsignal.com](http://www.cellsignal.com).**

**Please visit [www.cellsignal.com](http://www.cellsignal.com) for a complete listing of recommended complementary products.**

**IMPORTANT:** For western blots, incubate membrane with diluted antibody in 5% w/v BSA, 1X TBS, 0.1% Tween-20 at 4°C with gentle shaking, overnight.

**Applications Key:** W—Western IP—Immunoprecipitation IHC—Immunohistochemistry ChIP—Chromatin Immunoprecipitation IF—Immunofluorescence F—Flow cytometry E-P—ELISA-Peptide  
**Species Cross-Reactivity Key:** H—human M—mouse R—rat Hm—hamster Mk—monkey Mi—mink C—chicken Dm—D. melanogaster X—Xenopus Z—zebrafish B—bovine  
Dg—dog Pg—pig Sc—S. cerevisiae Ce—C. elegans Hr—horse All—all species expected Species enclosed in parentheses are predicted to react based on 100% homology.