

# His-Tag (D3I10) XP® Rabbit mAb (HRP Conjugate)

✓ 100 µl  
 (10 western blots)



**Orders** ■ 877-616-CELL (2355)  
 orders@cellsignal.com  
**Support** ■ 877-678-TECH (8324)  
 info@cellsignal.com  
**Web** ■ www.cellsignal.com

rev. 08/22/13

For Research Use Only. Not For Use In Diagnostic Procedures.

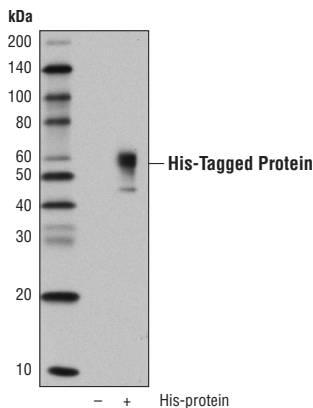
Applications W Transfected	Species Cross-Reactivity All	Isotype Rabbit IgG
----------------------------------	---------------------------------	-----------------------

**Description:** This Cell Signaling Technology® antibody is conjugated to the carbohydrate groups of horseradish peroxidase (HRP) via its amine groups. The HRP conjugated antibody is expected to exhibit the same species cross-reactivity as the unconjugated His-Tag (D3I10) XP® Rabbit mAb #12698.

**Background:** Epitope tags are useful for the labeling and detection of proteins using immunoblotting, immunoprecipitation, and immunostaining techniques. Because of their small size, they are unlikely to affect the tagged protein's biochemical properties.

**Specificity/Sensitivity:** His-Tag (D3I10) XP® Rabbit mAb recognizes recombinant proteins containing the 6xHis epitope tag. The antibody recognizes the 6xHis-tag fused to either the amino or carboxy terminus of targeted proteins in transfected cells.

**Source/Purification:** Monoclonal antibody is produced by immunizing animals with a synthetic peptide corresponding to residues of the 6xHis epitope tag.



Western blot analysis of extracts from 293T cells, untransfected (-) or transfected with a construct expressing 6xHis-Tag fusion protein (+), using His-Tag (D3I10) XP® Rabbit mAb (HRP Conjugate).

**Storage:** Supplied in 136 mM NaCl, 2.6 mM KCl, 12 mM sodium phosphate (pH 7.4) dibasic, 2 mg/ml BSA, and 50% glycerol. Store at -20°C. Do not aliquot the antibodies.

**\*Species cross-reactivity is determined by western blot using the unconjugated antibody.**

**HRP-conjugated antibodies do not require incubation with a secondary antibody.**

**Recommended Antibody Dilutions:**

Western blotting 1:1000

**For product specific protocols please see the web page for this product at [www.cellsignal.com](http://www.cellsignal.com).**

**Please visit [www.cellsignal.com](http://www.cellsignal.com) for a complete listing of recommended complementary products.**

**IMPORTANT:** For western blots, incubate membrane with diluted antibody in 5% w/v nonfat dry milk, 1X TBS, 0.1% Tween-20 at 4°C with gentle shaking, overnight.

**Applications Key:** W—Western IP—Immunoprecipitation IHC—Immunohistochemistry ChIP—Chromatin Immunoprecipitation IF—Immunofluorescence F—Flow cytometry E-P—ELISA—Peptide  
**Species Cross-Reactivity Key:** H—human M—mouse R—rat Hm—hamster Mk—monkey Mi—mink C—chicken Dm—D. melanogaster X—Xenopus Z—zebrafish B—bovine  
 Dg—dog Pg—pig Sc—S. cerevisiae Ce—C. elegans Hr—horse All—all species expected Species enclosed in parentheses are predicted to react based on 100% homology.