

Technical Data Sheet

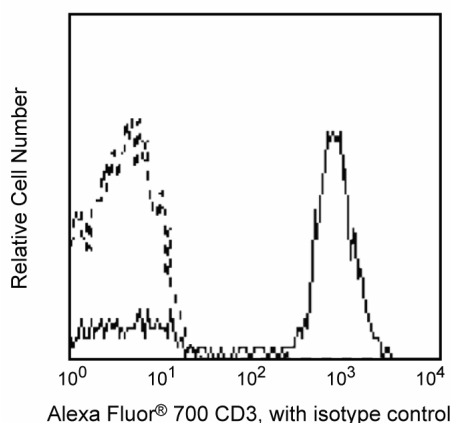
Alexa Fluor® 700 Mouse Anti-Human CD3

Product Information

Material Number:	561805
Size:	25 µg
Concentration:	0.2 mg/ml
Clone:	SP34-2
Isotype:	Mouse IgG1, λ
Reactivity:	Human
	QC Testing: Baboon or Cynomolgus or Rhesus
Storage Buffer:	Aqueous buffered solution containing protein stabilizer and ≤0.09% sodium azide.

Description

Clone SP34-2 is a mouse IgG1 isotype monoclonal antibody, descendant of SP34 (mouse IgG3), with the same specificity and reactivity pattern as the parent clone. It cross-reacts with a major subset of peripheral blood lymphocytes, but not monocytes or granulocytes, of baboon, and rhesus, cynomolgus, and pigtail macaque monkeys. The distribution on lymphocytes is similar to that observed with normal human donor lymphocytes with the majority of CD3-positive cells being negative when dual stained with antibodies to B or NK cells markers. SP34-2 is also capable of inducing cell proliferation on both human and non-human primate PBMC.



Profile of CD3 (SP34-3) reactivity on peripheral blood lymphocytes of rhesus macaque (macaca mulatta) analyzed by flow cytometry

Preparation and Storage

Store undiluted at 4°C and protected from prolonged exposure to light. Do not freeze.

The antibody was conjugated to Alexa Fluor® 700 under optimum conditions, and unreacted Alexa Fluor® 700 was removed.

The monoclonal antibody was purified from tissue culture supernatant or ascites by affinity chromatography.

Application Notes

Application

Flow cytometry	Routinely Tested
----------------	------------------

Suggested Companion Products

Catalog Number	Name	Size	Clone
557882	Alexa Fluor® 700 Mouse IgG1, κ Isotype Control	0.1 mg	MOPC-21
554656	Stain Buffer (FBS)	500 ml	(none)

Product Notices

1. Since applications vary, each investigator should titrate the reagent to obtain optimal results.
2. The Alexa Fluor®, Pacific Blue™, and Cascade Blue® dye antibody conjugates in this product are sold under license from Molecular Probes, Inc. for research use only, excluding use in combination with microarrays, or as analyte specific reagents. The Alexa Fluor® dyes (except for Alexa Fluor® 430), Pacific Blue™ dye, and Cascade Blue® dye are covered by pending and issued patents.

BD Biosciences

bdbiosciences.com

United States	Canada	Europe	Japan	Asia Pacific	Latin America/Caribbean
877.232.8995	888.268.5430	32.53.720.550	0120.8555.90	65.6861.0633	0800.771.7157

For country-specific contact information, visit bdbiosciences.com/how_to_order/

Conditions: The information disclosed herein is not to be construed as a recommendation to use the above product in violation of any patents. BD Biosciences will not be held responsible for patent infringement or other violations that may occur with the use of our products. Purchase does not include or carry any right to resell or transfer this product either as a stand-alone product or as a component of another product. Any use of this product other than the permitted use without the express written authorization of Becton Dickinson and Company is strictly prohibited.

For Research Use Only. Not for use in diagnostic or therapeutic procedures. Not for resale.

BD, BD Logo and all other trademarks are the property of Becton, Dickinson and Company. ©2011 BD



3. Alexa Fluor® 700 has an adsorption maximum of ~700nm and a peak fluorescence emission of ~720nm. Before staining cells with this reagent, please confirm that your flow cytometer is capable of exciting the fluorochrome and discriminating the resulting fluorescence.
4. Caution: Sodium azide yields highly toxic hydrazoic acid under acidic conditions. Dilute azide compounds in running water before discarding to avoid accumulation of potentially explosive deposits in plumbing.
5. For fluorochrome spectra and suitable instrument settings, please refer to our Fluorochrome Web Page at www.bdbiosciences.com/colors.
6. Alexa Fluor® is a registered trademark of Molecular Probes, Inc., Eugene, OR.
7. An isotype control should be used at the same concentration as the antibody of interest.
8. Please refer to www.bdbiosciences.com/pharmingen/protocols for technical protocols.

References

Carter DL, Shieh TM, Blosser RL et al. CD56 identifies monocytes and not natural killer cells in rhesus macaques. *Cytometry*. 1999; 37(1):41-50. (Biology)

Sancho J, Ledbetter JA, Choi MS, Kanner SB, Deans JP, Terhorst C. CD3-zeta surface expression is required for CD4-p56lck-mediated upregulation of T cell antigen receptor-CD3 signaling in T cells. *J Biol Chem*. 1992; 267(11):7871-7879. (Biology)

Schlossman S, Boumell L, et al, ed. *Leucocyte Typing V*. New York: Oxford University Press; 1995. (Biology)

Wilson AD, Shooshtari M, Finerty S, Watkins P, Morgan AJ. Selection of monoclonal antibodies for the identification of lymphocyte surface antigens in the New World primate *Saguinus oedipus oedipus* (cotton top tamarin). *J Immunol Methods*. 1995; 178(2):195-200. (Biology)