

Technical Data Sheet

FITC Mouse Anti-Human CD4

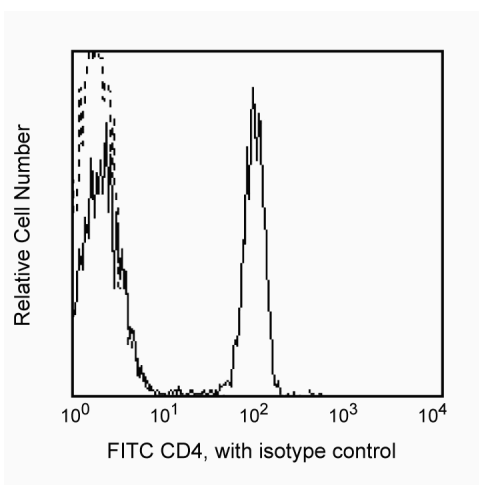
Product Information

Material Number:	555346
Size:	100 tests
Vol. per Test:	20 µl
Clone:	RPA-T4
Isotype:	Mouse IgG1, κ
Reactivity:	QC Testing: Human
Workshop:	IV T114
Storage Buffer:	Aqueous buffered solution containing BSA and ≤0.09% sodium azide.

Description

The RPA-T4 clone reacts with CD4, a 59 kDa single-chain transmembrane glycoprotein [receptor for human immunodeficiency virus (HIV)] present on T-helper/inducer cell populations. This antibody binds to the D1 domain (CDR1 and CDR3 epitopes) of the CD4 antigen and reacts with approximately 80% of thymocytes and 45% of peripheral blood lymphocytes. CD4 is also present in low density on peripheral blood monocytes. RPA-T4 is capable of blocking HIV-1, gp120, and inhibits syncytium formation.

This antibody is routinely tested by flow cytometric analysis. Other applications were tested at BD Biosciences Pharmingen during antibody development only or reported in the literature.



Profile of peripheral blood lymphocytes analyzed on a FACScan (BDIS, San Jose, CA)

Preparation and Storage

The monoclonal antibody was purified from tissue culture supernatant or ascites by affinity chromatography.

The antibody was conjugated with FITC under optimum conditions, and unreacted FITC was removed.

Store undiluted at 4° C and protected from prolonged exposure to light. Do not freeze.

Application Notes

Application

Flow cytometry	Routinely Tested
----------------	------------------

Suggested Companion Products

Catalog Number	Name	Size	Clone
555748	FITC Mouse IgG1, κ Isotype Control	100 tests	MOPC-21

BD Biosciences

www.bdbiosciences.com

United States 877.232.8995 Canada 888.259.0187 Europe 32.53.720.550 Japan 0120.8555.90 Asia Pacific 65.6861.0633 Latin America/Caribbean 55.11.5185.9995

For country-specific contact information, visit www.bdbiosciences.com/how_to_order/

Conditions: The information disclosed herein is not to be construed as a recommendation to use the above product in violation of any patents. BD Biosciences will not be held responsible for patent infringement or other violations that may occur with the use of our products. Purchase does not include or carry any right to resell or transfer this product either as a stand-alone product or as a component of another product. Any use of this product other than the permitted use without the express written authorization of Becton Dickinson and Company is strictly prohibited.

For Research Use Only. Not for use in diagnostic or therapeutic procedures. Not for resale.

BD, BD Logo and all other trademarks are the property of Becton, Dickinson and Company. ©2007 BD



Product Notices

1. This reagent has been pre-diluted for use at the recommended Volume per Test. We typically use 1 X 10⁶ cells in a 100-μl experimental sample (a test).
2. Since applications vary, each investigator should titrate the reagent to obtain optimal results.
3. Please refer to www.bdbiosciences.com/pharming/en/protocols for technical protocols.
4. Caution: Sodium azide yields highly toxic hydrazoic acid under acidic conditions. Dilute azide compounds in running water before discarding to avoid accumulation of potentially explosive deposits in plumbing.
5. Source of all serum proteins is from USDA inspected abattoirs located in the United States.

References

Schlossman SF, Boumsell L, Gilks W, et al, ed. *Leukocyte Typing V: White Cell Differentiation Antigens*. New York: Oxford University Press; 1995.(Clone-specific)
Knapp W, Dorken B, Rieber EP, et al, ed. *Leucocyte Typing IV*. New York: Oxford University Press; 1989.(Clone-specific)