

LIS1 Antibody

✓ 100 µl
(10 western blots)



Orders ■ 877-616-CELL (2355)
orders@cellsignaling.com
Support ■ 877-678-TECH (8324)
info@cellsignaling.com
Web ■ www.cellsignaling.com

New 01/13

For Research Use Only. Not For Use In Diagnostic Procedures.

Entrez-Gene ID #5048
Swiss-Prot Acc. #P43034

Applications W Endogenous	Species Cross-Reactivity* H, M, R, Mk	Molecular Wt. 47 kDa	Source Rabbit**
---------------------------------	--	-------------------------	--------------------

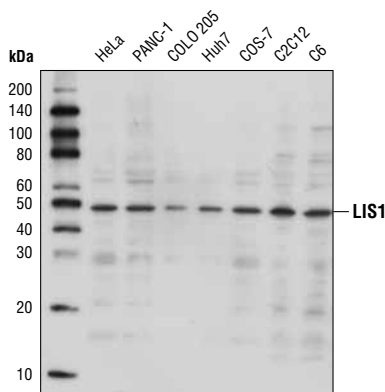
Background: LIS1 is a cytoskeleton-interacting protein that contains an N-terminal dimerization domain and a C-terminal β -propeller domain that interacts with the motor domain of dynein (1-3). Research studies have shown that mutations in the LIS1 gene are involved in lissencephaly, a disease characterized by severe defects in brain development (4). LIS1 also plays a critical role in cortical migration and development in the brain (5). LIS1 activity is required for retrograde translocation of excitatory synapses in developing interneuron dendrites in a microtubule-dependent fashion (6).

Specificity/Sensitivity: LIS1 Antibody recognizes endogenous levels of total LIS1 protein.

Source/Purification: Polyclonal antibodies are produced by immunizing animals with a synthetic peptide corresponding to residues surrounding Gly298 of human LIS1 protein. Antibodies are purified by protein A and peptide affinity chromatography.

Background References:

- (1) Sasaki, S. et al. (2000) *Neuron* 28, 681-96.
- (2) Tai, C.Y. et al. (2002) *J Cell Biol* 156, 959-68.
- (3) Tarricone, C. et al. (2004) *Neuron* 44, 809-21.
- (4) Reiner, O. et al. (1993) *Nature* 364, 717-21.
- (5) Wynshaw-Boris, A. (2007) *Clin Genet* 72, 296-304.
- (6) Kawabata, I. et al. (2012) *Nat Commun* 3, 722.



Western blot analysis of extracts from various cell lines using LIS1 Antibody.

Storage: Supplied in 10 mM sodium HEPES (pH 7.5), 150 mM NaCl, 100 µg/ml BSA and 50% glycerol. Store at -20°C. Do not aliquot the antibody.

***Species cross-reactivity is determined by western blot.**

****Anti-rabbit secondary antibodies must be used to detect this antibody.**

Recommended Antibody Dilutions:

Western blotting 1:1000

For product specific protocols please see the web page for this product at www.cellsignaling.com.

Please visit www.cellsignaling.com for a complete listing of recommended complementary products.

IMPORTANT: For western blots, incubate membrane with diluted antibody in 5% w/v BSA, 1X TBS, 0.1% Tween-20 at 4°C with gentle shaking, overnight.

Applications Key: W—Western IP—Immunoprecipitation IHC—Immunohistochemistry ChIP—Chromatin Immunoprecipitation IF—Immunofluorescence F—Flow cytometry E-P—ELISA-Peptide
Species Cross-Reactivity Key: H—human M—mouse R—rat Hm—hamster Mk—monkey Mi—mink C—chicken Dm—D. melanogaster X—Xenopus Z—zebrafish B—bovine
Dg—dog Pg—pig Sc—S. cerevisiae Ce—C. elegans Hr—horse All—all species expected Species enclosed in parentheses are predicted to react based on 100% homology.