

NRF1 Antibody

✓ 100 µl
(10 western blots)



Cell Signaling
TECHNOLOGY®

Orders ■ 877-616-CELL (2355)
orders@cellsignaling.com

Support ■ 877-678-TECH (8324)
info@cellsignaling.com

Web ■ www.cellsignaling.com

rev. 09/30/14

For Research Use Only. Not For Use In Diagnostic Procedures.

Applications W, IP Endogenous	Species Cross-Reactivity* H, M, R, Mk	Molecular Wt. 68 kDa	Source Rabbit**
-------------------------------------	--	-------------------------	--------------------

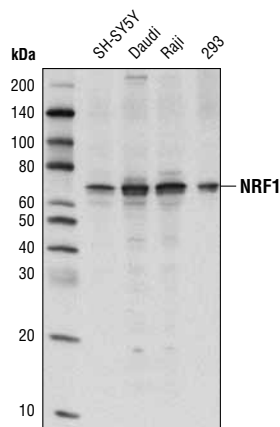
Background: Nuclear respiratory factor 1 (NRF1) was identified as a transcription activator for the gene encoding cytochrome c (1). It was later found to play a role in the nuclear control of mitochondrial function (1). PGC-1 induces the expression of NRF1 and NRF2 (2). NRF1, along with the coactivator PGC-1, stimulates the promoter of mitochondrial transcription factor A, which regulates mitochondrial biogenesis and function (2).

Specificity/Sensitivity: NRF1 Antibody recognizes endogenous levels of total NRF1 protein.

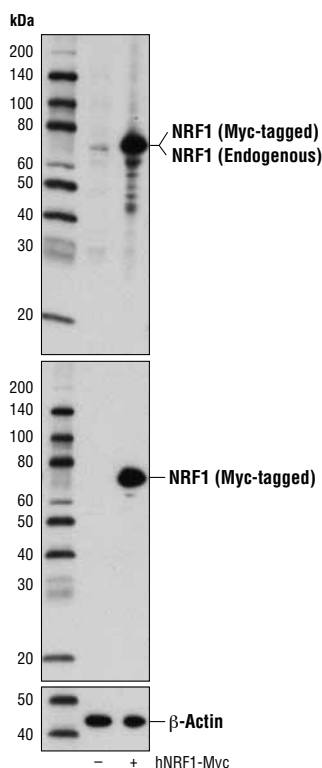
Source/Purification: Polyclonal antibodies are produced by immunizing animals with a synthetic peptide corresponding to residues surrounding Leu167 of human NRF1 protein. Antibodies are purified by protein A and peptide affinity chromatography.

Background References:

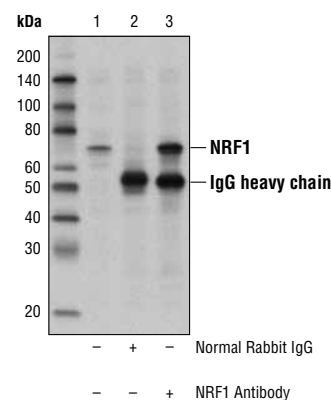
- (1) Virbasius, C.A. et al. (1993) *Genes Dev* 7, 2431-45.
- (2) Wu, Z. et al. (1999) *Cell* 98, 115-24.



Western blot analysis of extracts from various cell lines using NRF1 Antibody.



Western blot analysis of extracts from 293 cells, mock transfected (-) or transfected with a construct expressing Myc-tagged full-length human NRF1 (hNRF1-Myc; +), using NRF1 Antibody (upper), and Myc-Tag (71D10) Rabbit mAb #2278 (middle), or beta-Actin (D6A8) Rabbit mAb #8457 (lower).



Immunoprecipitation of NRF1 from SH-SY5Y cell extracts using Normal Rabbit IgG #2729 (lane 2) or NRF1 Antibody (lane 3). Lane 1 is 10% input. Western blot analysis was performed using NRF1 Antibody.

Entrez-Gene ID #4899
Swiss-Prot Acc. #Q16656

Storage: Supplied in 10 mM sodium HEPES (pH 7.5), 150 mM NaCl, 100 µg/ml BSA and 50% glycerol. Store at -20°C. Do not aliquot the antibody.

***Species cross-reactivity is determined by western blot.**

****Anti-rabbit secondary antibodies must be used to detect this antibody.**

Recommended Antibody Dilutions:

Western blotting 1:1000
Immunoprecipitation 1:50

For product specific protocols please see the web page for this product at www.cellsignaling.com.

Please visit www.cellsignaling.com for a complete listing of recommended complementary products.

IMPORTANT: For western blots, incubate membrane with diluted antibody in 5% w/v BSA, 1X TBS, 0.1% Tween® 20 at 4°C with gentle shaking, overnight.

Tween® is a registered trademark of ICI Americas, Inc.

Applications Key: W—Western IP—Immunoprecipitation IHC—Immunohistochemistry ChIP—Chromatin Immunoprecipitation IF—Immunofluorescence F—Flow cytometry E-P—ELISA-Peptide
Species Cross-Reactivity Key: H—human M—mouse R—rat Hm—hamster Mk—monkey Mi—mink C—chicken Dm—D. melanogaster X—Xenopus Z—zebrafish B—bovine
Dg—dog Pg—pig Sc—S. cerevisiae Ce—C. elegans Hr—horse All—all species expected Species enclosed in parentheses are predicted to react based on 100% homology.