

#12351 Store at -20°C

α-Tubulin (DM1A) Mouse mAb (HRP Conjugate)

✓ 100 µl (10 western blots)



Orders ■ 877-616-CELL (2355) orders@cellsignal.com
Support ■ 877-678-TECH (8324) info@cellsignal.com
Web ■ www.cellsignal.com

New 03/13

For Research Use Only. Not For Use In Diagnostic Procedures.

Applications W Endogenous	Species Cross-Reactivity H, M, R, Mk	Molecular Wt. 52 kDa	Isotype Mouse IgG1
---------------------------------	---	-------------------------	-----------------------

Description: This Cell Signaling Technology antibody is conjugated to the carbohydrate groups of horseradish peroxidase (HRP) via its amine groups. The HRP conjugated antibody is expected to exhibit the same species cross-reactivity as the unconjugated α-Tubulin (DM1A) Mouse mAb #3873.

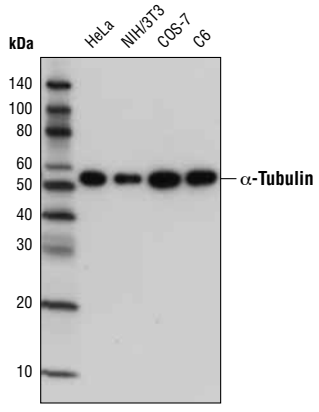
Background: The cytoskeleton consists of three types of cytosolic fibers: microtubules, microfilaments (actin filaments), and intermediate filaments. Globular tubulin subunits comprise the microtubule building block, with α/β-tubulin heterodimers forming the tubulin subunit common to all eukaryotic cells. γ-tubulin is required to nucleate polymerization of tubulin subunits to form microtubule polymers. Many cell movements are mediated by microtubule action, including the beating of cilia and flagella, cytoplasmic transport of membrane vesicles, chromosome alignment during meiosis/mitosis, and nerve-cell axon migration. These movements result from competitive microtubule polymerization and depolymerization or through the actions of microtubule motor proteins (1).

Specificity/Sensitivity: α-Tubulin (DM1A) Mouse mAb (HRP Conjugate) recognizes endogenous levels of total α-tubulin protein.

Source/Purification: Monoclonal antibody is produced by immunizing animals with full-length chicken α-tubulin purified from brain extracts, and recognizes residues surrounding Val440 of α-tubulin protein.

Background References:

(1) Westermann, S. and Weber, K. (2003) *Nat. Rev. Mol. Cell Biol.* 4, 938 -947.



Western blot analysis of extracts from various cell lines using α-Tubulin (DM1A) Mouse mAb (HRP Conjugate).

Entrez-Gene ID #10376
Swiss-Prot Acc. #P68363

Storage: Supplied in 136 mM NaCl, 2.6 mM KCl, 12 mM sodium phosphate (pH 7.4) dibasic, 2 mg/ml BSA, and 50% glycerol. Store at -20°C. Do not aliquot the antibody.

HRP conjugated antibodies do not require incubation with a secondary antibody.

Recommended Antibody Dilutions:

Western blotting 1:1000

For product specific protocols please see the web page for this product at www.cellsignal.com.

Please visit www.cellsignal.com for a complete listing of recommended complementary products.

IMPORTANT: For western blots, incubate membrane with diluted antibody in 5% w/v nonfat dry milk, 1X TBS, 0.1% Tween-20 at 4°C with gentle shaking, overnight.

© 2013 Cell Signaling Technology, Inc. Cell Signaling Technology® is a trademark of Cell Signaling Technology, Inc.

Applications Key: W—Western IP—Immunoprecipitation IHC—Immunohistochemistry ChIP—Chromatin Immunoprecipitation IF—Immunofluorescence F—Flow cytometry E-P—ELISA—Peptide
Species Cross-Reactivity Key: H—human M—mouse R—rat Hm—hamster Mk—monkey Mi—mink C—chicken Dm—D. melanogaster X—Xenopus Z—zebrafish B—bovine
Dg—dog Pg—pig Sc—S. cerevisiae Ce—C. elegans Hr—horse All—all species expected Species enclosed in parentheses are predicted to react based on 100% homology.