

Pumilio 1 Antibody

✓ 100 µl
(10 western blots)

Orders ■ 877-616-CELL (2355)
orders@cellsignal.com
Support ■ 877-678-TECH (8324)
info@cellsignal.com
Web ■ www.cellsignal.com

New 09/12

For Research Use Only. Not For Use In Diagnostic Procedures.

Entrez-Gene ID #9698
Swiss-Prot Acc. #Q14671

Applications
W, IP
Endogenous

Species Cross-Reactivity*
H, M, (R, Mk)

Molecular Wt.
140 kDa

Source
Rabbit**

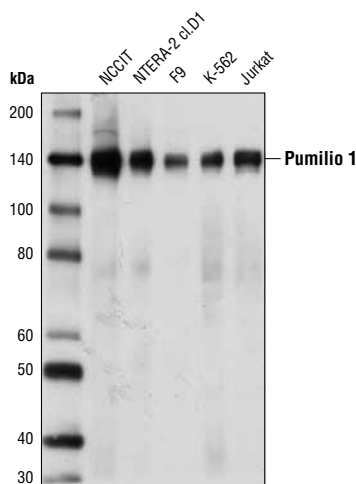
Background: Pumilio 1 and Pumilio 2 (PUM1, PUM2, or Pumilio homolog 1 and 2, respectively) are evolutionarily conserved RNA binding proteins that are thought to repress translation and stability of mRNA targets by binding to the 3'-UTR of specific RNA sequences (1). Pumilio proteins have been implicated in the regulation of genes involved in embryogenesis and germline cell development (2). Research studies have shown that PUM2 may have a role in neural stem cell fate decisions (3).

Specificity/Sensitivity: Pumilio 1 Antibody recognizes endogenous levels of total pumilio 1 protein.

Source/Purification: Polyclonal antibodies are produced by immunizing animals with a synthetic peptide corresponding to residues surrounding Gly169 of human pumilio 1 protein. Antibodies are purified by protein A and peptide affinity chromatography.

Background References:

- (1) Weidmann, C.A. and Goldstrohm, A.C. (2012) *Mol Cell Biol* 32, 527-40.
- (2) Spassov, D.S. and Jurecic, R. (2003) *IUBMB Life* 55, 359-66.
- (3) Vessey, J.P. et al. (2012) *Cell Stem Cell*, Epub ahead of print.



Western blot analysis of extracts from various cell lines using Pumilio 1 Antibody.

Storage: Supplied in 10 mM sodium HEPES (pH 7.5), 150 mM NaCl, 100 µg/ml BSA and 50% glycerol. Store at -20°C. Do not aliquot the antibody.

***Species cross-reactivity is determined by western blot.**

****Anti-rabbit secondary antibodies must be used to detect this antibody.**

Recommended Antibody Dilutions:

Western blotting 1:1000
Immunoprecipitation 1:100

For product specific protocols please see the web page for this product at www.cellsignal.com.

Please visit www.cellsignal.com for a complete listing of recommended complementary products.

IMPORTANT: For western blots, incubate membrane with diluted antibody in 5% w/v BSA, 1X TBS, 0.1% Tween-20 at 4°C with gentle shaking, overnight.

Applications Key: W—Western IP—Immunoprecipitation IHC—Immunohistochemistry ChIP—Chromatin Immunoprecipitation IF—Immunofluorescence F—Flow cytometry E-P—ELISA-Peptide
Species Cross-Reactivity Key: H—human M—mouse R—rat Hm—hamster Mk—monkey Mi—mink C—chicken Dm—D. melanogaster X—Xenopus Z—zebrafish B—bovine
Dg—dog Pg—pig Sc—S. cerevisiae Ce—C. elegans Hr—horse All—all species expected Species enclosed in parentheses are predicted to react based on 100% homology.