

Ki-67 (D3B5) Rabbit mAb (PE Conjugate)



✓ 100 µl
(50 tests)

Orders ■ 877-616-CELL (2355)
orders@cellsignal.com
Support ■ 877-678-TECH (8324)
info@cellsignal.com
Web ■ www.cellsignal.com

New 01/13

For Research Use Only. Not For Use In Diagnostic Procedures.

Entrez-Gene ID #4288
Swiss-Prot Acc. #P46013

Applications
F
Endogenous

Species Cross-Reactivity*
H, M, R

Isotype
Rabbit IgG

Description: This Cell Signaling Technology antibody is conjugated to phycoerythrin (PE) and tested in-house for direct flow cytometry analysis in human cells. The antibody is expected to exhibit the same species cross-reactivity as the unconjugated Ki-67 (D3B5) Rabbit mAb #9129.

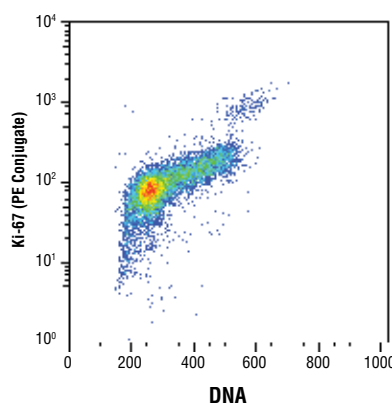
Background: Ki-67, named after the location where it was discovered (Kiel University, Germany), is a nuclear nonhistone protein (1) that is universally expressed among proliferating cells and absent in quiescent cells (2). Ki-67 detects proliferating cells in G1, S, G2, and mitosis, but not in the G0 resting phase. Research studies have shown that high levels of Ki-67 are associated with poorer breast cancer survival (3). Research studies have explored the use of Ki-67, along with other markers, as potential prognostic or predictive markers in breast cancer and other malignant diseases (4).

Specificity/Sensitivity: Ki-67 (D3B5) Rabbit mAb (PE Conjugate) recognizes endogenous levels of total Ki-67 protein.

Source/Purification: Monoclonal antibody is produced by immunizing animals with a recombinant protein specific to the amino terminus of human Ki-67 protein.

Background References:

- (1) Gerdes, J. et al. (1983) *Int J Cancer* 31, 13-20.
- (2) Weigel, M.T. and Dowsett, M. (2010) *Endocr Relat Cancer* 17, R245-62.
- (3) Jones, R.L. et al. (2009) *Breast Cancer Res Treat* 116, 53-68.
- (4) Yerushalmi, R. et al. (2010) *Lancet Oncol* 11, 174-83.



Flow cytometric analysis of Jurkat cells using Ki-67 (D3B5) Rabbit mAb (PE Conjugate) and DRAQ5® #4084 (fluorescent DNA dye).

Storage: Supplied in PBS (pH 7.2), less than 0.1% sodium azide and 2 mg/ml BSA. Store at 4°C. Do not aliquot the antibody. Protect from light. Do not freeze.

***Species cross-reactivity other than human, mouse, monkey and rat is determined by western blot using the unconjugated antibody.**

Recommended Antibody Dilutions:

Flow Cytometry 1:50

For product specific protocols please see the web page for this product at www.cellsignal.com.

Please visit www.cellsignal.com for a complete listing of recommended complementary products.

DRAQ5® is a registered trademark of Biostatus Limited.

Applications Key: W—Western IP—Immunoprecipitation IHC—Immunohistochemistry ChIP—Chromatin Immunoprecipitation IF—Immunofluorescence F—Flow cytometry E-P—ELISA-Peptide
Species Cross-Reactivity Key: H—human M—mouse R—rat Hm—hamster Mk—monkey Mi—mink C—chicken Dm—D. melanogaster X—Xenopus Z—zebrafish B—bovine
Dg—dog Pg—pig Sc—S. cerevisiae Ce—C. elegans Hr—horse All—all species expected Species enclosed in parentheses are predicted to react based on 100% homology.