

Certificate of Analysis

pGL4.72[hRLucCP] Vector:

Part No. Size
E690A 20µg



Instructions for use of this product can be found in the pGL4 Vectors Technical Manual #TM259, available online at: www.promega.com/protocols

Description: The pGL4.72[hRLucCP] Vector^(a-c) encodes the luciferase reporter gene *hRLucCP* (*Renilla reniformis*) and is designed for high expression and reduced anomalous transcription. The pGL4 Vectors are engineered with fewer consensus regulatory sequences and a synthetic gene, which has been codon optimized for mammalian expression.

The pGL4.72[hRLucCP] Vector has no promoter. However, it contains a multiple cloning region that allows for cloning of a promoter of choice. The *hRLucCP* reporter gene contains two protein destabilization sequences, hCL1 and hPEST. The protein encoded by *hRLucCP* responds more quickly and with greater magnitude to changes in transcriptional activity than the *hLuc* gene, its more stable counterpart.

Concentration: 1µg/µl.

Storage Buffer: The pGL4.72[hRLucCP] Vector is supplied in 10mM Tris-HCl (pH 7.4), 1mM EDTA.

Storage Conditions: See the product information label for storage temperature recommendations. Avoid multiple freeze-thaw cycles and exposure to frequent temperature changes. These fluctuations can greatly alter product stability. See the expiration date on the product information label.

Usage Notes:

1. For easy transfer from one pGL4 Vector to another, the multiple cloning region is consistent throughout the pGL4 Vector series. For easy transfer between pGL3 Vectors and pGL4 Vectors, many of the restriction enzyme sites present in the pGL3 Vectors are also present in the pGL4 Vectors.
2. Concentration gradients may form in frozen products and should be dispersed upon thawing. Mix well prior to use.

Quality Control Assays

Nuclease Assay: Following incubation of 1µg of pGL4.72[hRLucCP] Vector in standard restriction digest buffers at 37°C for 16–24 hours, no evidence of nuclease activity was detected by agarose gel electrophoresis.

Physical Purity: $A_{260}/A_{280} \geq 1.80$, $A_{260}/A_{250} \geq 1.05$ at pH 7.4.

Sequence: The pGL4.72[hRLucCP] Vector has been completely sequenced and is 100% identical to the published sequence, available at: www.promega.com/vectors

Signed by:

J. Stevens, Quality Assurance

^(a)READ THIS FIRST BEFORE OPENING PRODUCT

The sale of this product and its use are subject to the terms of a limited use label license, the full text of which is available at: www.promega.com/LULL. That text must be read by the purchaser prior to opening this product to determine whether the purchaser agrees that all use of the product shall be in accordance with the license terms. If the purchaser is not willing to accept the terms of the limited use label license, Promega is willing to accept the return of the unused product and provide the purchaser with a full refund. However, if the product is opened for any reason, then the purchaser agrees to be bound by the terms of the limited use label license.

^(b)Patent Pending.

^(c)U.S. Pat. No. 7,906,282 and European Pat. No. 1341808.

Part# 9PIE690
Revised 5/13



AF9PI E690 0513E690



Promega

Promega Corporation

2800 Woods Hollow Road	
Madison, WI 53711-5399	USA
Telephone	608-274-4330
Toll Free	800-356-9526
Fax	608-277-2516
Internet	www.promega.com

PRODUCT USE LIMITATIONS, WARRANTY, DISCLAIMER

Promega manufactures products for a number of intended uses. Please refer to the product label for the intended use statements for specific products. Promega products contain chemicals which may be harmful if misused. Due care should be exercised with all Promega products to prevent direct human contact.

Each Promega product is shipped with documentation stating specifications and other technical information. Promega products are warranted to meet or exceed the stated specifications. Promega's sole obligation and the customer's sole remedy is limited to replacement of products free of charge in the event products fail to perform as warranted. Promega makes no other warranty of any kind whatsoever, and SPECIFICALLY DISCLAIMS AND EXCLUDES ALL OTHER WARRANTIES OF ANY KIND OR NATURE WHATSOEVER, DIRECTLY OR INDIRECTLY, EXPRESS OR IMPLIED, INCLUDING, WITHOUT LIMITATION, AS TO THE SUITABILITY, PRODUCTIVITY, DURABILITY, FITNESS FOR A PARTICULAR PURPOSE OR USE, MERCHANTABILITY, CONDITION, OR ANY OTHER MATTER WITH RESPECT TO PROMEGA PRODUCTS. In no event shall Promega be liable for claims for any other damages, whether direct, incidental, foreseeable, consequential, or special (including but not limited to loss of use, revenue or profit), whether based upon warranty, contract, tort (including negligence) or strict liability arising in connection with the sale or the failure of Promega products to perform in accordance with the stated specifications.

© 2004–2013 Promega Corporation. All Rights Reserved.

GenBank is a registered trademark of US Department of Health and Human Services.

Products may be covered by pending or issued patents or may have certain limitations. Please visit our Web site for more information.

All specifications are subject to change without prior notice.

Product claims are subject to change. Please contact Promega Technical Services or access the Promega online catalog for the most up-to-date information on Promega products.

Part# 9PIE690
Printed in USA. Revised 5/13.



pGL4.72[hRlucCP] Vector Features and Circle Map

The following features are present in the vector based on nucleotide sequence.

Multiple cloning region	1-70
<i>hRlucCP</i> reporter gene	100-1212
SV40 late poly(A) signal	1249-1470
Reporter Vector primer 4 (RVprimer4) binding region	1538-1557
<i>ColEI</i> -derived plasmid replication origin	1795
Synthetic β -lactamase (Amp ^r) coding region	2586-3446
Synthetic poly(A) signal/transcriptional pause site	3551-3704
Reporter Vector primer 3 (RVprimer3) binding region	3653-3672

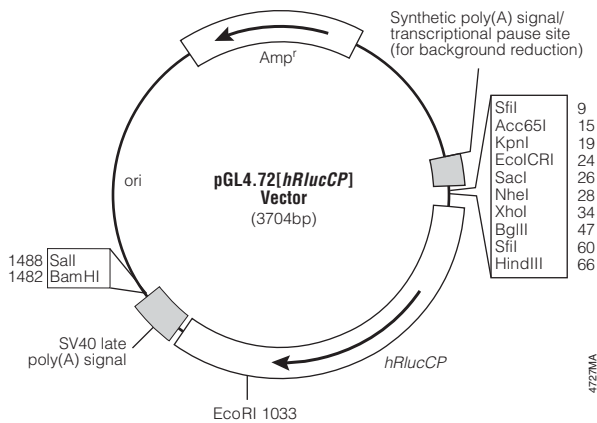


Figure 1. pGL4.72[hRlucCP] Vector map.

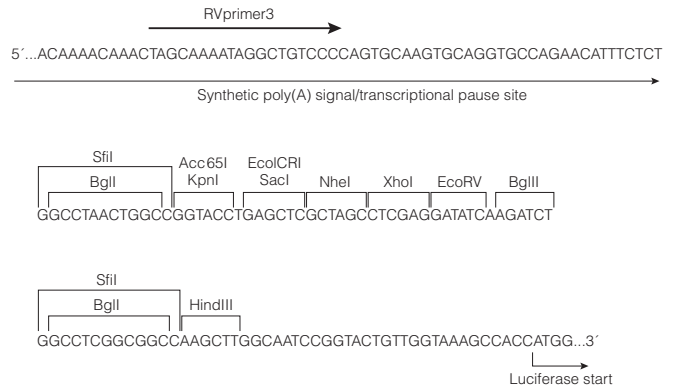


Figure 2. Multiple cloning region of the pGL4.72[hRlucCP] Vector.

Sequence information, vectors maps and restriction enzyme tables for the pGL4 Vectors are available online at: www.promega.com/vectors
Further information on the use of pGL4 Vectors is available in Technical Manual #TM259, available online at: www.promega.com/protocols