

Certificate of Analysis

pGL4.24[*luc2P*/minP] Vector:

Part No. Size
E842A 20µg



Instructions for use of this product can be found in the pGL4 Luciferase Reporter Vectors Technical Manual #TM259, available online at: www.promega.com/protocols

Description: The pGL4.24[*luc2P*/minP] Vector^(a-e) encodes the luciferase reporter gene *luc2P* (*Photinus pyralis*) and is designed for high expression and reduced anomalous transcription. The vector contains a multiple cloning region for insertion of a response element of interest upstream of a minimal promoter and the *luc2P* gene. *luc2P* is a synthetically derived luciferase sequence with humanized codon optimization. The *luc2P* gene also contains hPEST, a protein destabilization sequence. The protein encoded by *luc2P* responds more quickly than the protein encoded by the *luc2* gene upon induction. The vector backbone contains an ampicillin resistance gene to allow selection in *E. coli*.

Concentration: 1µg/µl.

GenBank® Accession Number: DQ904456.

Storage Buffer: The pGL4.24[*luc2P*/minP] Vector is supplied in 10mM Tris-HCl (pH 7.4), 1mM EDTA.

Storage Conditions: See the product information label for storage temperature recommendations. Avoid multiple freeze-thaw cycles and exposure to frequent temperature changes. These fluctuations can greatly alter product stability. See the expiration date on the product information label.

Usage Note: Concentration gradients may form in frozen products and should be dispersed upon thawing. Mix well prior to use.

Quality Control Assays

Nuclease Assay: Following incubation of 1µg of the vector in restriction digest buffer B at 37°C for 16 hours, no evidence of nuclease activity is detected by agarose gel electrophoresis.

Physical Purity: $A_{260}/A_{280} \geq 1.80$, $A_{260}/A_{250} \geq 1.05$ at pH 7.4.

Sequence: The pGL4.24[*luc2P*/minP] Vector has been completely sequenced and has 100% identity with the published sequence, available at: www.promega.com/vectors

Signed by:

J. Stevens, Quality Assurance

^(a)BY USE OF THIS PRODUCT, RESEARCHER AGREES TO BE BOUND BY THE TERMS OF THIS LIMITED USE LABEL LICENSE. If the researcher is not willing to accept the terms of this label license, and the product is unused, Promega will accept return of the unused product and provide the researcher with a full refund.

Researchers may use this product for research use only, no commercial use is allowed. "Commercial use" means any and all uses of this product and derivatives by a party for money or other consideration and may include but is not limited to use in: (1) product manufacture; and (2) to provide a service, information or data; and/or resale of the product or its derivatives, whether or not such product or derivatives are resold for use in research. Researchers shall have no right to modify or otherwise create variations of the nucleotide sequence of the luciferase gene except that researchers may: (1) create fused gene sequences provided that the coding sequence of the resulting luciferase gene has no more than four deoxynucleotides missing at the affected terminus compared to the intact luciferase gene sequence, and (2) insert and remove nucleic acid sequences in splicing research predicated on the inactivation or reconstitution of the luminescence of the encoded luciferase. No other use or transfer of this product or derivatives is authorized without the prior express written consent of Promega. In addition, researchers must either: (1) use luminescent assay reagents purchased from Promega for all determinations of luminescence activity of this product and its derivatives; or (2) contact Promega to obtain a license for use of the product and its derivatives. Researchers may transfer derivatives to others for research use provided that at the time of transfer a copy of this label license is given to the recipients and recipients agree to be bound by the terms of this label license. With respect to any uses outside this label license, including any diagnostic, therapeutic or prophylactic uses, please contact Promega for supply and licensing information. PROMEGA MAKES NO REPRESENTATIONS OR WARRANTIES OF ANY KIND, EITHER EXPRESSED OR IMPLIED, INCLUDING FOR MERCHANTABILITY OR FITNESS FOR A PARTICULAR PURPOSE WITH REGARDS TO THE PRODUCT. The terms of this label license shall be governed under the laws of the State of Wisconsin, USA. This label license relates to Promega patents and/or patent applications on improvements to the luciferase gene.

^(b)U.S. Pat. No. 5,670,356.

^(c)Patent Pending.

^(d)U.S. Pat. No. 8,008,006 and European Pat. No. 1341808.

^(e)The method of recombinant expression of *Colloptera* luciferase is covered by U.S. Pat. Nos. 5,583,024, 5,674,713 and 5,700,673. A license (from Promega for research reagent products and from The Regents of the University of California for all other fields) is needed for any commercial sale of nucleic acid contained within or derived from this product.

Part# 9PIE842
Revised 6/13



AF9PI E842 0613E842



Promega

Promega Corporation

2800 Woods Hollow Road	
Madison, WI 53711-5399	USA
Telephone	608-274-4330
Toll Free	800-356-9526
Fax	608-277-2516
Internet	www.promega.com

PRODUCT USE LIMITATIONS, WARRANTY, DISCLAIMER

Promega manufactures products for a number of intended uses. Please refer to the product label for the intended use statements for specific products. Promega products contain chemicals which may be harmful if misused. Due care should be exercised with all Promega products to prevent direct human contact.

Each Promega product is shipped with documentation stating specifications and other technical information. Promega products are warranted to meet or exceed the stated specifications. Promega's sole obligation and the customer's sole remedy is limited to replacement of products free of charge in the event products fail to perform as warranted. Promega makes no other warranty of any kind whatsoever, and SPECIFICALLY DISCLAIMS AND EXCLUDES ALL OTHER WARRANTIES OF ANY KIND OR NATURE WHATSOEVER, DIRECTLY OR INDIRECTLY, EXPRESS OR IMPLIED, INCLUDING, WITHOUT LIMITATION, AS TO THE SUITABILITY, PRODUCTIVITY, DURABILITY, FITNESS FOR A PARTICULAR PURPOSE OR USE, MERCHANTABILITY, CONDITION, OR ANY OTHER MATTER WITH RESPECT TO PROMEGA PRODUCTS. In no event shall Promega be liable for claims for any other damages, whether direct, incidental, foreseeable, consequential, or special (including but not limited to loss of use, revenue or profit), whether based upon warranty, contract, tort (including negligence) or strict liability arising in connection with the sale or the failure of Promega products to perform in accordance with the stated specifications.

© 2006–2013 Promega Corporation. All Rights Reserved.

GenBank is a registered trademark of the U.S. Department of Health and Human Services.

Products may be covered by pending or issued patents or may have certain limitations. Please visit our Web site for more information.

All specifications are subject to change without prior notice.

Product claims are subject to change. Please contact Promega Technical Services or access the Promega online catalog for the most up-to-date information on Promega products.

Part# 9PIE842
Printed in USA. Revised 6/13.

pGL4.24[*luc2P*/minP] Vector Features List and Maps:

Multiple cloning region	1–70
Minimal promoter	78–108
<i>luc2P</i> reporter gene	141–1916
SV40 late poly(A) region	1956–2177
Reporter Vector primer 4 (RVprimer4) binding region	2245–2264
<i>ColE1</i> -derived plasmid replication origin	2502
Synthetic β-lactamase (<i>Amp^r</i>) coding region	3293–4153
Synthetic poly(A) signal/transcriptional pause region	4258–4411
Reporter Vector primer 3 (RVprimer3) binding region	4360–4379

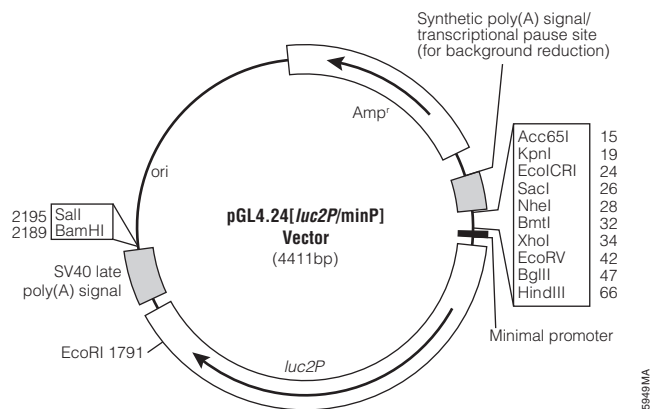


Figure 1. pGL4.24[*luc2P*/minP] Vector map.

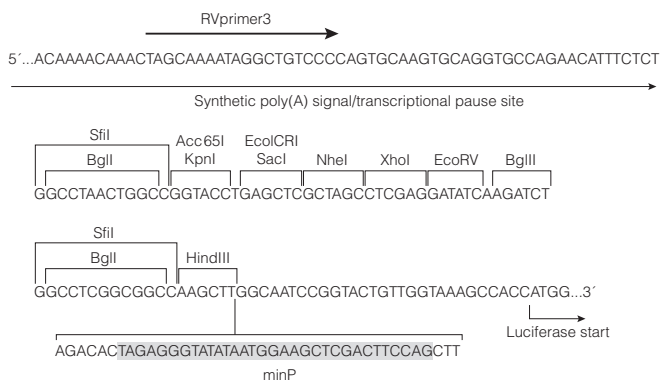


Figure 2. Multiple cloning region of the pGL4.24[*luc2P*/minP] Vector.

Sequence information, vector maps and restriction enzyme tables for the pGL4 Vectors are available online at: www.promega.com/vectors

For more information see the *pGL4 Luciferase Reporter Vectors Technical Manual #TM259*, online at: www.promega.com/protocols