

## DESCRIPTION

<b>Species Reactivity</b>	Human
<b>Specificity</b>	Detects human TREM-2 in direct ELISAs and Western blots. In direct ELISAs and Western blots, approximately 5% cross-reactivity with recombinant mouse (rm) TREM-2b is observed and less than 1% cross-reactivity with recombinant human TREM-1 and rmTREM-3 is observed.
<b>Source</b>	Polyclonal Goat IgG
<b>Purification</b>	Antigen Affinity-purified
<b>Immunogen</b>	Mouse myeloma cell line NS0-derived recombinant human TREM-2 His19-Ser174 Accession # Q9NZC2
<b>Formulation</b>	Lyophilized from a 0.2 µm filtered solution in PBS with Trehalose. See Certificate of Analysis for details.

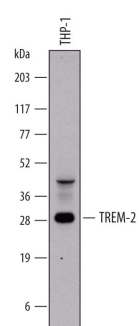
## APPLICATIONS

**Please Note:** Optimal dilutions should be determined by each laboratory for each application. *General Protocols* are available in the *Technical Information* section on our website.

	Recommended Concentration	Sample
<b>Western Blot</b>	0.2 µg/mL	See Below
<b>Flow Cytometry</b>	2.5 µg/10 <sup>6</sup> cells	Human peripheral blood monocytes
<b>Immunocytochemistry</b>	5-15 µg/mL	See Below

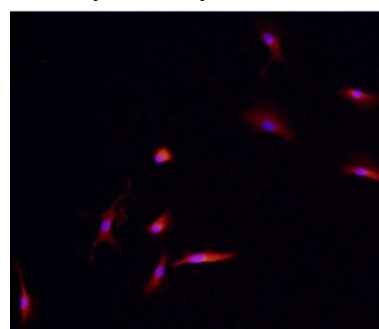
## DATA

### Western Blot



**Detection of Human TREM-2 by Western Blot.** Western blot shows lysates of THP-1 human acute monocytic leukemia cell line. PVDF membrane was probed with 0.2 µg/mL of Goat Anti-Human TREM-2 Antigen Affinity-purified Polyclonal Antibody (Catalog # AF1828) followed by HRP-conjugated Anti-Goat IgG Secondary Antibody (Catalog # HAF109). A specific band was detected for TREM-2 at approximately 28 kDa (as indicated). This experiment was conducted under reducing conditions and using [Immunoblot Buffer Group 1](#).

### Immunocytochemistry



**TREM-2 in Human Dendritic Cells.** TREM-2 was detected in immersion fixed immature human dendritic cells using Goat Anti-Human TREM-2 Antigen Affinity-purified Polyclonal Antibody (Catalog # AF1828) at 10 µg/mL for 3 hours at room temperature. Cells were stained using the NorthernLights™ 557-conjugated Anti-Goat IgG Secondary Antibody (red; Catalog # NL001) and counterstained with DAPI (blue). Specific staining was localized to cytoplasm. View our protocol for [Fluorescent ICC Staining of Cells on Coverslips](#).

## PREPARATION AND STORAGE

<b>Reconstitution</b>	Reconstitute at 0.2 mg/mL in sterile PBS.
<b>Shipping</b>	The product is shipped at ambient temperature. Upon receipt, store it immediately at the temperature recommended below.
<b>Stability &amp; Storage</b>	<p><b>Use a manual defrost freezer and avoid repeated freeze-thaw cycles.</b></p> <ul style="list-style-type: none"> <li>● 12 months from date of receipt, -20 to -70 °C as supplied.</li> <li>● 1 month, 2 to 8 °C under sterile conditions after reconstitution.</li> <li>● 6 months, -20 to -70 °C under sterile conditions after reconstitution.</li> </ul>

## BACKGROUND

TREM-2 is a single Ig domain receptor expressed by cells of myeloid lineage. It is a pattern recognition receptor that binds anionic ligands. TREM-2 associates with the adapter protein DAP12 to deliver an activating signal that plays a role in both innate and adaptive immune responses.