

## DESCRIPTION

<b>Species Reactivity</b>	Human
<b>Specificity</b>	Detects human SLPI in direct ELISAs and Western blots. In direct ELISAs, approximately 20% cross-reactivity with mouse SLPI is observed.
<b>Source</b>	Polyclonal Goat IgG
<b>Purification</b>	Antigen Affinity-purified
<b>Immunogen</b>	<i>E. coli</i> -derived recombinant human SLPI
<b>Formulation</b>	Lyophilized from a 0.2 µm filtered solution in PBS with Trehalose. See Certificate of Analysis for details.

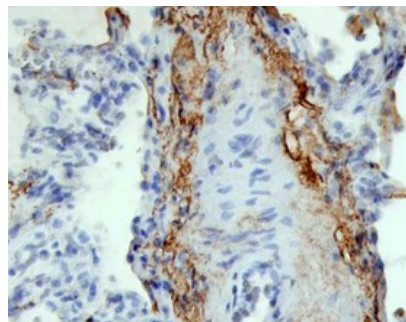
## APPLICATIONS

**Please Note:** Optimal dilutions should be determined by each laboratory for each application. [General Protocols](#) are available in the Technical Information section on our website.

	<b>Recommended Concentration</b>	<b>Sample</b>
<b>Western Blot</b>	0.1 µg/mL	Recombinant Human SLPI (Catalog # <a href="#">1274-PI</a> )
<b>Immunohistochemistry</b>	5-15 µg/mL	See Below
<b>Neutralization</b>	Measured by its ability to neutralize Recombinant Human SLPI (0.125 µg/mL, Catalog # <a href="#">1274-PI</a> ) inhibition of Trypsin (0.5 µg/mL) cleavage of the fluorogenic peptide substrate Mca-RPKPVE-Nval-WRK(Dnp)-NH <sub>2</sub> (10 µM, Catalog # <a href="#">ES002</a> ). The Neutralization Dose (ND <sub>50</sub> ) is typically 1.5 µg/mL.	

## DATA

### Immunohistochemistry



#### SLPI in Human Lung.

SLPI was detected in immersion fixed paraffin-embedded sections of human lung using Goat Anti-Human SLPI Antigen Affinity-purified Polyclonal Antibody (Catalog # AF1274) at 10 µg/mL overnight at 4 °C. Tissue was stained using the Anti-Goat HRP-DAB Cell & Tissue Staining Kit (brown; Catalog # [CTS008](#)) and counterstained with hematoxylin (blue). Specific staining was localized to cell surfaces and cytoplasm. View our protocol for [Chromogenic IHC Staining of Paraffin-embedded Tissue Sections](#).

## PREPARATION AND STORAGE

<b>Reconstitution</b>	Reconstitute at 0.2 mg/mL in sterile PBS.
<b>Shipping</b>	The product is shipped at ambient temperature. Upon receipt, store it immediately at the temperature recommended below.
<b>Stability &amp; Storage</b>	<p><b>Use a manual defrost freezer and avoid repeated freeze-thaw cycles.</b></p> <ul style="list-style-type: none"> <li>● 12 months from date of receipt, -20 to -70 °C as supplied.</li> <li>● 1 month, 2 to 8 °C under sterile conditions after reconstitution.</li> <li>● 6 months, -20 to -70 °C under sterile conditions after reconstitution.</li> </ul>

## BACKGROUND

SLPI is a member of the Serpin family and is primarily expressed in secretory glandular epithelial cells. It is found in various secretory fluids and functions as a potent inhibitor of many proteolytic enzymes. SLPI can modulate cell proliferation and has been shown to have anti-inflammatory, anti-viral, and anti-bacterial activities (1, 2).

### References:

1. Zhang, D. *et al.* (2002) J. Biol. Chem. **277**:29999.
2. Taggart, C.C. *et al.* (2002) J. Biol. Chem. **277**:33648.