

DESCRIPTION

Species Reactivity	Mouse
Specificity	Detects mouse Sca-1/Ly6 in direct ELISAs and Western blots.
Source	Polyclonal Goat IgG
Purification	Antigen Affinity-purified
Immunogen	Mouse myeloma cell line NS0-derived recombinant mouse Sca-1 C-terminally truncated Ly-6E allele Leu27-Gly119 Accession # CAA28351
Endotoxin Level	<0.10 EU per 1 µg of the antibody by the LAL method.
Formulation	Lyophilized from a 0.2 µm filtered solution in PBS with Trehalose. See Certificate of Analysis for details.

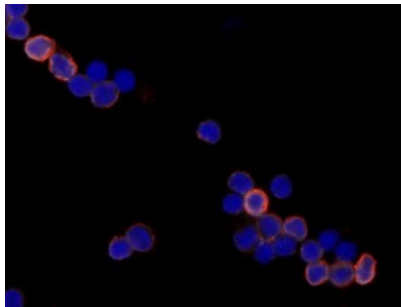
APPLICATIONS

Please Note: Optimal dilutions should be determined by each laboratory for each application. [General Protocols](#) are available in the [Technical Information](#) section on our website.

	Recommended Concentration	Sample
Western Blot	0.1 µg/mL	Recombinant Mouse Sca-1/Ly6
Flow Cytometry	2.5 µg/10 ⁶ cells	Mouse splenocytes
Immunocytochemistry	5-15 µg/mL	See Below

DATA

Immunocytochemistry



Sca-1 / Ly6 in Mouse Splenocytes. Sca-1/Ly6 was detected in immersion fixed mouse splenocytes using 10 µg/mL Goat Anti-Mouse Sca-1/Ly6 Antigen Affinity-purified Polyclonal Antibody (Catalog # AF1226) for 3 hours at room temperature. Cells were stained with the NorthernLights™ 557-conjugated Anti-Goat IgG Secondary Antibody (red; Catalog # NL001) and counterstained with DAPI (blue). View our protocol for [Fluorescent ICC Staining of Non-adherent Cells](#).

PREPARATION AND STORAGE

Reconstitution	Reconstitute at 0.2 mg/mL in sterile PBS.
Shipping	The product is shipped at ambient temperature. Upon receipt, store it immediately at the temperature recommended below.
Stability & Storage	Use a manual defrost freezer and avoid repeated freeze-thaw cycles. <ul style="list-style-type: none"> ● 12 months from date of receipt, -20 to -70 °C as supplied. ● 1 month from date of receipt, 2 to 8 °C, reconstituted. ● 6 months from date of receipt, -20 to -70 °C, reconstituted.

BACKGROUND

This antibody reacts with Sca-1, an 18 kDa phosphatidylinositol-anchored protein that is a member of the lymphocyte antigen 6 (Ly-6) family (1). Sca-1 is encoded by the strain-specific Ly-6 E/A allelic gene. Its expression on multipotent hematopoietic stem cells (HSC) has been used as a marker of HSC in mice of both Ly-6 haplotypes (2, 3). This antibody is frequently used in combination with lineage depletion antibodies to identify and isolate murine HSC. Sca-1-positive HSC can be found in the adult bone marrow, fetal liver and mobilized peripheral blood and spleen in the adult animal (2-7). However, Sca-1 has also been discovered in several non-hematopoietic tissues (1) and can be used to enrich progenitor cell populations other than HSC (8). It is suggested that Sca-1 could be involved in regulating both B and T cell activation (9-12).

References:

1. Van de Rijn, M. *et al.* (1989) Proc. Natl. Acad. Sci. USA **86**:4634.
2. Spangrude, G.I. *et al.* (1988) Science **241**:58.
3. Spangrude, G.I. *et al.* (1993) Blood **82**:3327.
4. Morrison, S.J. *et al.* (1995) Proc. Natl. Acad. Sci. USA **92**:10302.
5. Kawamoto, H. *et al.* (1997) Int. Immunol. **9**:1011.
6. Yamamoto, Y. *et al.* (1996) Blood **88**:445.
7. Morrison, S.J. *et al.* (1997) Proc. Natl. Acad. Sci. USA **94**:1908.
8. Welm, B.E. *et al.* (2002) Dev. Biol. **245**:42.
9. Codias, E.K. *et al.* (1990) J. Immunol. **144**:2197.
10. Malek, T.R. *et al.* (1986) J. Exp. Med. **164**:709.
11. Codias, E.K. *et al.* (1990) J. Immunol. **145**:1407.
12. Flood, P.M. *et al.* (1990) J. Exp. Med. **172**:115.