

DESCRIPTION

Species Reactivity	Mouse
Specificity	Detects mouse TROP-2 in direct ELISAs and Western blots. In direct ELISAs, approximately 30% cross-reactivity with recombinant human TROP-2 is observed.
Source	Polyclonal Goat IgG
Purification	Antigen Affinity-purified
Immunogen	Mouse myeloma cell line NS0-derived recombinant mouse TROP-2 Ser82-Thr268 Accession # Q8BGV3
Formulation	Lyophilized from a 0.2 µm filtered solution in PBS with Trehalose. See Certificate of Analysis for details.

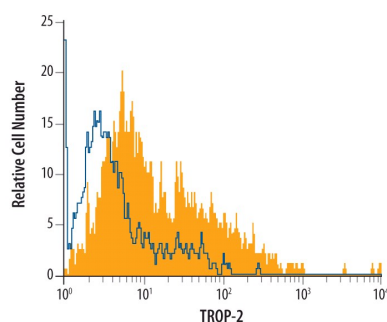
APPLICATIONS

Please Note: Optimal dilutions should be determined by each laboratory for each application. [General Protocols](#) are available in the Technical Information section on our website.

	Recommended Concentration	Sample
Western Blot	0.1 µg/mL	Recombinant Mouse TROP-2
Flow Cytometry	2.5 µg/10 ⁶ cells	See Below
Immunocytochemistry	5-15 µg/mL	See Below
Immunohistochemistry	5-15 µg/mL	Perfusion fixed frozen sections of mouse testis

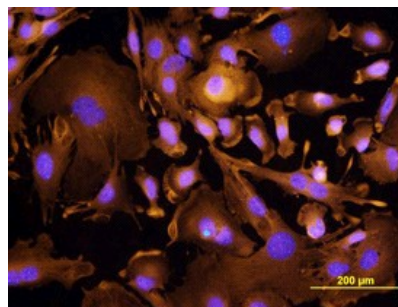
DATA

Flow Cytometry



Detection of TROP-2 in XB2 Mouse Cell Line by Flow Cytometry. XB2 mouse teratoma keratinocyte cell line was stained with Mouse TROP-2 Antigen Affinity-purified Polyclonal Antibody (Catalog # AF1122, filled histogram) or isotype control antibody (Catalog # AB-108-C, open histogram), followed by Allophycocyanin-conjugated Anti-Goat IgG Secondary Antibody (Catalog # F0108).

Immunocytochemistry



TROP-2 in XB2 Mouse Cell Line. TROP-2 was detected in immersion fixed XB2 mouse teratoma keratinocyte cell line using Mouse TROP-2 Antigen Affinity-purified Polyclonal Antibody (Catalog # AF1122) at 10 µg/mL for 3 hours at room temperature. Cells were stained using the NorthernLights™ 557-conjugated Anti-Goat IgG Secondary Antibody (yellow; Catalog # NL001) and counterstained with DAPI (blue). View our protocol for [Fluorescent ICC Staining of Cells on Coverslips](#).

PREPARATION AND STORAGE

Reconstitution	Reconstitute at 0.2 mg/mL in sterile PBS.
Shipping	The product is shipped at ambient temperature. Upon receipt, store it immediately at the temperature recommended below.
Stability & Storage	<p>Use a manual defrost freezer and avoid repeated freeze-thaw cycles.</p> <ul style="list-style-type: none"> ● 12 months from date of receipt, -20 to -70 °C as supplied. ● 1 month from date of receipt, 2 to 8 °C, reconstituted. ● 6 months from date of receipt, -20 to -70 °C, reconstituted.

BACKGROUND

TROP-2, also named tumor-associated calcium signal transducer 2 (TACSTD2), GA733 tumor associated antigen, and epithelial glycoprotein-1 (EGP-1), is a type I transmembrane protein highly expressed in carcinomas. It was originally identified as an antigen present on human gastrointestinal tumors and is the second of two members of this family. The other family member is GA7332, also called EpCAM, TROP1, 171A, gp40 and KSA. TROP2 can transduce an intracellular calcium signal and may play a role in tumor growth. It also has adhesive functions.