

## DESCRIPTION

<b>Species Reactivity</b>	Human/Mouse
<b>Specificity</b>	Detects human and mouse MMP-24/MT5-MMP in Western blots.
<b>Source</b>	Polyclonal Rabbit IgG
<b>Purification</b>	Protein A or G purified
<b>Immunogen</b>	<i>E. coli</i> -derived recombinant human MMP-24/MT5-MMP
<b>Formulation</b>	Lyophilized from a 0.2 µm filtered solution in PBS with Trehalose. See Certificate of Analysis for details.

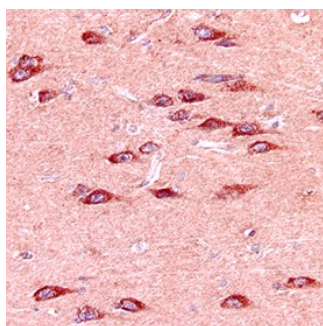
## APPLICATIONS

**Please Note:** Optimal dilutions should be determined by each laboratory for each application. [General Protocols](#) are available in the Technical Information section on our website.

	<b>Recommended Concentration</b>	<b>Sample</b>
<b>Western Blot</b>	1 µg/mL	Recombinant Human/Mouse MMP-24/MT5-MMP Western Blot Standard (Catalog # <a href="#">WBC014</a> )
<b>Immunohistochemistry</b>	5-15 µg/mL	See Below
<b>Immunoprecipitation</b>	25 µg/mL	Conditioned cell culture medium spiked with Recombinant Human or Recombinant Mouse MMP-24/MT5-MMP, <a href="#">see our available Western blot detection antibodies</a>

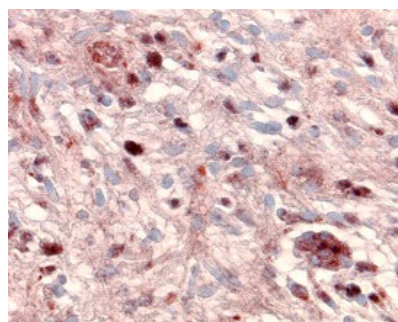
## DATA

### Immunohistochemistry



**MMP-24 in Human Brain.** MMP-24 was detected in immersion fixed paraffin-embedded sections of human brain using Rabbit Anti-Human/Mouse MMP-24/MT5-MMP Polyclonal Antibody (Catalog # AB924) at 15 µg/mL overnight at 4 °C. Tissue was stained using the Anti-Rabbit HRP-AEC Cell & Tissue Staining Kit (red; Catalog # [CTS006](#)) and counterstained with hematoxylin (blue). Specific labeling was localized to the cytoplasm of neurons. View our protocol for [Chromogenic IHC Staining of Paraffin-embedded Tissue Sections](#).

### Immunohistochemistry



**MMP-24 in Human Astrocytoma.** MMP-24 was detected in immersion fixed paraffin-embedded sections of human brain (astrocytoma) using Rabbit Anti-Human/Mouse MMP-24/MT5-MMP Polyclonal Antibody (Catalog # AB924) at 15 µg/mL overnight at 4 °C. Tissue was stained using the Anti-Rabbit HRP-AEC Cell & Tissue Staining Kit (red; Catalog # [CTS006](#)) and counterstained with hematoxylin (blue). Specific labeling was localized to the cytoplasm of cancer cells. View our protocol for [Chromogenic IHC Staining of Paraffin-embedded Tissue Sections](#).

## PREPARATION AND STORAGE

<b>Reconstitution</b>	Reconstitute at 0.2 mg/mL in sterile PBS.
<b>Shipping</b>	The product is shipped at ambient temperature. Upon receipt, store it immediately at the temperature recommended below.
<b>Stability &amp; Storage</b>	<p><b>Use a manual defrost freezer and avoid repeated freeze-thaw cycles.</b></p> <ul style="list-style-type: none"> <li>● 12 months from date of receipt, -20 to -70 °C as supplied.</li> <li>● 1 month, 2 to 8 °C under sterile conditions after reconstitution.</li> <li>● 6 months, -20 to -70 °C under sterile conditions after reconstitution.</li> </ul>