

# MOUSE MONOCLONAL ANTIBODY AGAINST HUMAN INTERFERON BETA (MMHB-16)

Product Number: **21470-1**

Lot Number:

Size: **50 ug**

**Description:** Mouse Anti-Human Interferon Beta

**Clone:** MMHB-16

**Volume:** ml

**Concentration:** mg/ml

**Buffer:** phosphate buffered saline (PBS) containing 0.1% bovine serum albumin (BSA)

**Antigen:** human interferon beta

**Isotype:** IgG<sub>1</sub>

**Bioactivity:** binds to human interferon beta with high affinity.

**Special Conditions/Comments:** After receipt, this product should be kept at -20 °C or below for retention of full activity. When thawing, the contents of the tube should be apportioned in separate tubes so that freezing and thawing is kept to a minimum.

Due to the variation in ND<sub>50</sub> values based on cell type and assay system, we recommend each user determine the neutralizing concentration of this antibody lot in their assay system. In an A549/EMCV (cell/virus) assay system, the antibody does not neutralize the cytopathic inhibitory effect of human interferon beta 1a, mammalian.

**Tested Application:** Direct Binding ELISA

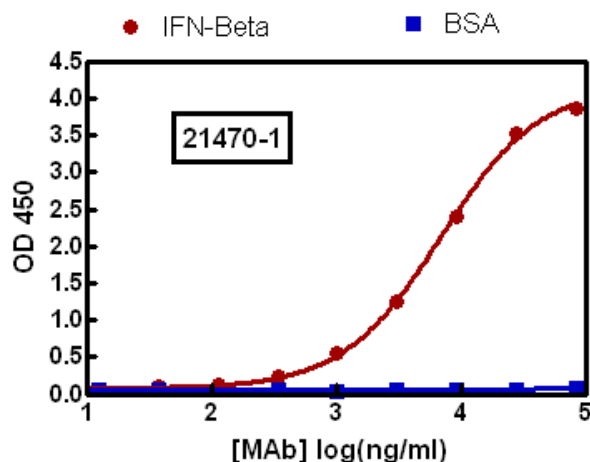


Figure 1: Representative binding curve of antibody to mammalian expressed human interferon beta 1a (circle) and to 0.1% BSA/PBS (square) in a Direct Binding ELISA. Medium-binding polystyrene plates were coated with either 1 µg/ml human interferon beta 1a or 0.1%BSA/PBS. Thereafter, titrations of the product were added to the wells. Donkey anti-mouse IgG conjugated to HRP was used as the detection antibody. Colorimetric detection was performed using 3, 3', 5, 5'-Tetramethylbenzidine (TMB) substrate. The HRP-TMB reaction was stopped using a diluted H<sub>2</sub>SO<sub>4</sub>/HCL solution.

Note: PBL has not tested the use of this product in western blot, flow cytometry, immunoprecipitation and immunohistochemistry



**Shipping Conditions:** Dry ice

**Physical State of Product During Shipping:** Frozen

**Authorization**

Released by: \_\_\_\_\_

Date: \_\_\_\_\_

**Sold under license from Pestka Biomedical Laboratories, Inc. d/b/a PBL InterferonSource. For research use only. Not for diagnostic or clinical use in, or administration to, humans. Not for resale in original or any modified form, including inclusion in a kit, for any purpose. Not for use in the preparation of any commercial product.**

Rev.02

131 Ethel Rd West, Suite 6, Piscataway, NJ 08854 • T: +1-732-777-9123 • F: +1-732-777-9141  
E: [info@interferonsource.com](mailto:info@interferonsource.com) • W: [www.interferonsource.com](http://www.interferonsource.com)