

## FITC anti-human IL-2

**Catalog # / Size:** 500305 / 50 µg  
500304 / 100 tests

**Clone:** MQ1-17H12

**Isotype:** Rat IgG2a, κ

**Immunogen:** *E. coli* - expressed recombinant human IL-2

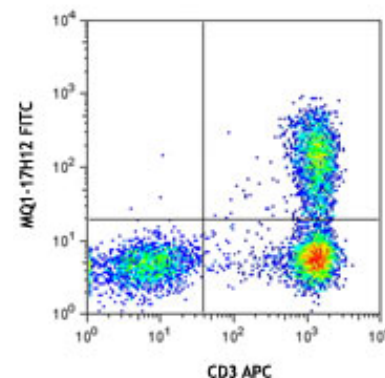
**Reactivity:** Human, **Cross-Reactivity:** Chimpanzee, Baboon, Cynomolgus, Rhesus, Sooty Mangabey

**Preparation:** The antibody was purified by affinity chromatography, and conjugated with FITC under optimal conditions. The solution is free of unconjugated FITC.

**Formulation:** test size: Phosphate-buffered solution, pH 7.2, containing 0.09% sodium azide and 0.2% (w/v) BSA (origin USA).  
µg size: Phosphate-buffered solution, pH 7.2, containing 0.09% sodium azide.

**Concentration:** test size: lot-specific; µg size: 0.5 mg/ml

**Storage:** The antibody solution should be stored undiluted at 4°C and protected from prolonged exposure to light. **Do not freeze.**



5 hours PMA + ionomycin-stimulated human peripheral blood lymphocytes (in the presence of monensin) were stained with CD3 APC, fixed, permeabilized, and then stained with IL-2 (clone MQ1-17H12) FITC (top) or rat IgG2a, κ FITC isotype control (bottom).

## Applications:

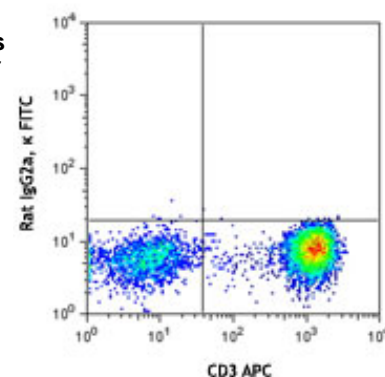
**Applications:** ICFC - Quality tested

**Recommended Usage:** Each lot of this antibody is quality control tested by intracellular immunofluorescent staining with flow cytometric analysis. **Test size products are transitioning from 20 µl to 5 µl per test.** Please check your vial or your CoA to find the suggested use of this reagent per million cells in 100 µl staining volume or per 100 µl of whole blood. It is recommended that the reagent be titrated for optimal performance for each application. Read more at [www.biolegend.com/testsize](http://www.biolegend.com/testsize) regarding the test size change.

**Application Notes:** **ELISA or ELISPOT Capture<sup>2,3</sup>:** The purified MQ1-17H12 antibody is useful as the capture antibody in a sandwich ELISA or ELISPOT assay, when used in conjunction with the biotinylated Poly5176 antibody (Cat. No. 517601) as the detecting antibody. The LEAF™ purified antibody is suggested for ELISPOT capture. For ELISPOT capture applications, a concentration range of 4-8 µg/ml is recommended.

**Additional reported applications (for the relevant formats) include:** immunoprecipitation<sup>2</sup>, immunohistochemical staining of paraformaldehyde-fixed, saponin-treated frozen tissue sections<sup>1,4-6,8</sup>, and immunocytochemistry.

**Note:** For testing human IL-2 in serum or plasma, BioLegend's ELISA Max™ Sets (Cat. No. 431801 to 431806) are specially developed and recommended.



- Application References:**
- Andersson J, *et al.* 1994. *Immunology* 83:16. (IHC)
  - Abrams J, *et al.* 1992. *Immunol. Rev.* 127:5. (IP)
  - Abrams JS. 1995. *Curr. Prot. Immunol.* Unit 6.20.
  - Fernandez V, *et al.* 1994. *Eur. J. Immunol.* 24:1808. (IHC)
  - Skansen-Saphir U, *et al.* 1994. *Eur. J. Immunol.* 24:916. (IHC)
  - Andersson U, *et al.* *Detection and Quantification of Gene Expression.* New York:Springer-Verlag. (IHC)
  - Prussin C, *et al.* 1995. *J. Immunol. Methods.* 188:117.
  - Raqib R, *et al.* 2002. *Infect. Immun.* 70:3199. (IHC)
  - Dzhagalov I, *et al.* 2007. *J. Immunol.* 178:2113. PubMed
  - Colleton BA, *et al.* 2009. *J Virol.* 83:6288. PubMed
  - Yoshino N, *et al.* 2000. *Exp. Anim. (Tokyo)* 49:97. (FC)
  - Rout N, *et al.* 2010. *PLoS One* 5:e9787. (FC)

**Description:** IL-2 is a potent lymphoid cell growth factor which exerts its biological activity primarily on T cells, promoting proliferation and maturation. Additionally, IL-2 has been found to stimulate growth and differentiation of B cells, NK cells, LAK cells, monocytes, and oligodendrocytes.

- Antigen References:**
- Fitzgerald K, *et al.* Eds. 2001. *The Cytokine FactsBook.* Academic Press, San Diego.
  - Taniguchi T, *et al.* 1993. *Cell* 73:5.



For research use only. Not for diagnostic use. Not for resale. BioLegend will not be held responsible for patent infringement or other violations that may occur with the use of our products.



\*These products may be covered by one or more Limited Use Label Licenses (see the BioLegend Catalog or our website, [www.biolegend.com/ordering#license](http://www.biolegend.com/ordering#license)). BioLegend products may not be transferred to third parties, resold, modified for resale, or used to manufacture commercial products, reverse engineer functionally similar materials, or to provide a service to third parties without written approval of BioLegend. By use of these products you accept the terms and conditions of all applicable Limited Use Label Licenses. Unless otherwise indicated, these products are for research use only and are not intended for human or animal diagnostic, therapeutic or commercial use.

3. Nistico G. 1993. *Prog. Neurobiol.* 40:463.
4. Waldmann T, *et al.* 1993. *Ann. NY Acad. Sci.* 685:603.

Related Products:Product	Clone	Application
Cell Staining Buffer		FC, ICC, ICFC
Fixation Buffer		ICC, ICFC
Permeabilization Wash Buffer (10X)		ICC, ICFC, IHC
RBC Lysis Buffer (10X)		FC, ICFC
Brefeldin A Solution (1,000X)		ICFC
Monensin Solution (1,000X)		ICFC
FITC Rat IgG2a, $\kappa$ Isotype Ctrl	RTK2758	FC, ICFC



For research use only. Not for diagnostic use. Not for resale. BioLegend will not be held responsible for patent infringement or other violations that may occur with the use of our products.



\*These products may be covered by one or more Limited Use Label Licenses (see the BioLegend Catalog or our website, [www.biolegend.com/ordering#license](http://www.biolegend.com/ordering#license)). BioLegend products may not be transferred to third parties, resold, modified for resale, or used to manufacture commercial products, reverse engineer functionally similar materials, or to provide a service to third parties without written approval of BioLegend. By use of these products you accept the terms and conditions of all applicable Limited Use Label Licenses. Unless otherwise indicated, these products are for research use only and are not intended for human or animal diagnostic, therapeutic or commercial use.