

Product Data Sheet

PE anti-human IL-1 α

Catalog # / Size: 500107 / 50 μ g
500106 / 100 tests

Clone: 364-3B3-14

Isotype: Mouse IgG1, κ

Immunogen: Recombinant human IL-1 α

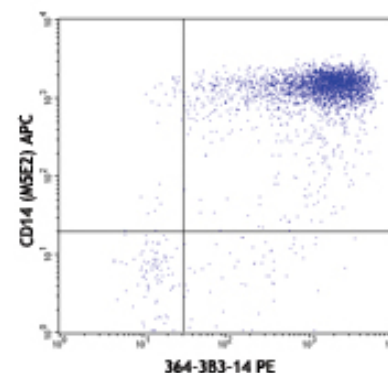
Reactivity: Human, **Cross-Reactivity:** Rhesus

Preparation: The antibody was purified by affinity chromatography, and conjugated with PE under optimal conditions. The solution is free of unconjugated PE and unconjugated antibody.

Formulation: test size: Phosphate-buffered solution, pH 7.2, containing 0.09% sodium azide and 0.2% (w/v) BSA (origin USA).
 μ g size: Phosphate-buffered solution, pH 7.2, containing 0.09% sodium azide.

Concentration: test size: lot-specific; μ g size: 0.2 mg/ml

Storage: The antibody solution should be stored undiluted at 4°C and protected from prolonged exposure to light. **Do not freeze.**



LPS-stimulated (6 hours) human peripheral blood monocytes surface stained with CD14 APC and intracellular stained with 364-3B3-14 PE

Applications:

Applications: ICFC - *Quality tested*

Recommended Usage: Each lot of this antibody is quality control tested by intracellular immunofluorescent staining with flow cytometric analysis. **Test size products are transitioning from 20 μ l to 5 μ l per test.** Please check your vial or your CoA to find the suggested use of this reagent per million cells in 100 μ l staining volume or per 100 μ l of whole blood. It is recommended that the reagent be titrated for optimal performance for each application. Read more at www.biolegend.com/testsize regarding the test size change.

Application Notes: **ELISA or ELISPOT Capture¹:** The purified 364-3B3-14 antibody is useful as the capture antibody in a sandwich ELISA or ELISPOT assay, when used in conjunction with the biotinylated BL-5015 antibody (Cat. No. 500201) as the detecting antibody. The LEAF™ purified antibody is suggested for ELISPOT capture.

Flow Cytometry⁴: The fluorochrome-labeled 364-3B3-14 antibody is useful for intracellular immunofluorescent staining and flow cytometric analysis to identify IL-1 α -producing cells within mixed cell populations. For intracellular cytokine staining protocol, please visit www.biolegend.com and click on the support section.

Additional reported applications (for the relevant formats) include: immunohistochemistry³. The 364-3B3-14 is a non-neutralizing antibody.

Application References:

1. Thorpe, R., *et al.* 1988. *Lymphokine Res.* 2:119.
2. Prussin, C., *et al.* 1995. *J. Immunol. Meth.* 188:117.
3. Andersson, U., *et al.* 1999. *Detection and quantification of gene expression*. New York:Springer-Verlag.
4. Enriquez, J., *et al.* 2002. *Adv. Perit Dial.* 18:177.
5. Aouba, A., *et al.* 2010. *Blood* 19:4070. PubMed

Description: IL-1 refers to two proteins, IL-1 α and IL-1 β which are the products of distinct genes, but which are recognized by the same cell surface receptors. IL-1 α is a potent immuno-modulator which mediates a wide range of immune and inflammatory responses. The 364-3B3-14 antibody reacts with human interleukin-1 α (IL-1 α). The 364-3B3-14 antibody is a non-neutralizing antibody.

Antigen References:

1. Fitzgerald, K., *et al.* Eds. 2001. *The Cytokine FactsBook*. Academic Press, San Diego.
2. Bomford, R., *et al.* Eds. 1989. *Interleukin-1, inflammation and disease*. Elsevier, New York.
3. Brazel, D., *et al.* 1991. *Biotechnol. Ther.* 2:241.
4. Dinarello, C. 1996. *Blood* 87:2095.

Related Products:

Product
PE Mouse IgG1, κ Isotype Ctrl
Cell Staining Buffer
Fixation Buffer
Permeabilization Wash Buffer (10X)
RBC Lysis Buffer (10X)
Brefeldin A Solution (1,000X)
Monensin Solution (1,000X)
PE Mouse IgG1, κ Isotype Ctrl (ICFC)

Clone
MOPC-21

MOPC-21

Application
FC, ICFC
FC, ICC, ICFC
ICC, ICFC
ICC, ICFC, IHC
FC, ICFC
ICFC
ICFC
ICFC



For research use only. Not for diagnostic use. Not for resale. BioLegend will not be held responsible for patent infringement or other violations that may occur with the use of our products.



*These products may be covered by one or more Limited Use Label Licenses (see the BioLegend Catalog or our website, www.biolegend.com/ordering#license). BioLegend products may not be transferred to third parties, resold, modified for resale, or used to manufacture commercial products, reverse engineer functionally similar materials, or to provide a service to third parties without written approval of BioLegend. By use of these products you accept the terms and conditions of all applicable Limited Use Label Licenses. Unless otherwise indicated, these products are for research use only and are not intended for human or animal diagnostic, therapeutic or commercial use.