

Product Data Sheet

PE anti-human GM-CSF

Catalog # / Size: 502305 / 25 tests
502306 / 100 tests

Clone: BVD2-21C11

Isotype: Rat IgG2a, κ

Immunogen: *E. coli*-expressed, recombinant human GM-CSF.

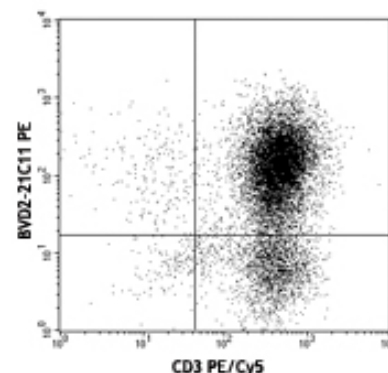
Reactivity: Human, **Cross-Reactivity:** Cynomolgus, Rhesus

Preparation: The antibody was purified by affinity chromatography, and conjugated with PE under optimal conditions. The solution is free of unconjugated PE and unconjugated antibody.

Formulation: test sizes: Phosphate-buffered solution, pH 7.2, containing 0.09% sodium azide and 0.2% (w/v) BSA (origin USA).
 μ g size: Phosphate-buffered solution, pH 7.2, containing 0.09% sodium azide.

Concentration: test sizes: lot-specific; μ g size: 0.2 mg/ml

Storage: The antibody solution should be stored undiluted at 4°C and protected from prolonged exposure to light. **Do not freeze.**



PMA-restimulated Th2 polarized human peripheral blood lymphocytes were surface stained with CD3 PE/Cy5 and intracellularly stained with BVD2-21C11 PE.

Applications:

Applications: ICFC - *Quality tested*

Recommended Usage: Each lot of this antibody is quality control tested by intracellular immunofluorescent staining with flow cytometric analysis. **Test size products are transitioning from 20 μ l to 5 μ l per test.** Please check your vial or your CoA to find the suggested use of this reagent per million cells in 100 μ l staining volume or per 100 μ l of whole blood. It is recommended that the reagent be titrated for optimal performance for each application. Read more at www.biolegend.com/testsize regarding the test size change.

Application Notes: **ELISA¹⁻⁴ or ELISPOT^{3,4} Detection:** The biotinylated BVD2-21C11 antibody is useful as a detection antibody in a sandwich ELISA or ELISPOT assay, when used in conjunction with the purified BVD2-23B6 antibody (Cat. No. 502202/502204) as the capture antibody.
Flow Cytometry: The fluorochrome-labeled BVD2-21C11 is useful for intracellular immunofluorescent staining and flow cytometric analysis to identify GM-CSF-producing cells within mixed cell populations.
Neutralization: The BVD2-21C11 antibody can neutralize the bioactivity of natural or recombinant GM-CSF¹.
Additional reported applications (for the relevant formats) include: immunoprecipitation¹, Western blotting, immunohistochemical staining of paraformaldehyde-fixed, saponin-treated frozen tissue sections^{5,6}, and immunocytochemistry.
Note: For testing human GM-CSF in serum or plasma, BioLegend's ELISA Max™ Sets (Cat. No. 432001 to 432006) are specially developed and recommended.

Application References:

1. Abrams J, *et al.* 1992. *Immunol. Rev.* 127:5.
2. Abrams J, *et al.* 1994. *Eosinophils in Allergy and Inflammation*. Marcel Dekker New York. p.133.
3. Bacchetta R, *et al.* 1990. *J. Immunol.* 144:902.
4. Kita H, *et al.* 1991. *J. Exp. Med.* 174:745.
5. Andersson U, *et al.* 1999. *Detection and quantification of gene expression*. New York:Springer-Verlag.
6. Andersson J, *et al.* 1994. *Immunology* 83:16.

Description: Granulocyte/macrophage - colony stimulating factor (GM-CSF) is a hematopoietic factor that is produced by activated T cells, B cells, mast cells, macrophages, fibroblasts, and endothelial cells. In addition to supporting colony formation of granulocyte/macrophage progenitors, GM-CSF is a growth factor for erythroid, megakaryocyte, and eosinophil progenitors.

Antigen References:

1. Fitzgerald K, *et al.* Eds. 2001. *The Cytokine FactsBook*. Academic Press San Diego.
2. Demetri G, *et al.* 1991. *Blood* 78:2791.
3. Fan D, *et al.* 1991. *In vivo* 5:571.
4. Negrin R, *et al.* 1992. *Adv. Pharmacol.* 23:263.

Related Products:

Product
Cell Staining Buffer
Fixation Buffer
Permeabilization Wash Buffer (10X)
RBC Lysis Buffer (10X)
Brefeldin A Solution (1,000X)
Monensin Solution (1,000X)

Clone

Application

FC, ICC, ICFC
ICC, ICFC
ICC, ICFC, IHC
FC, ICFC
ICFC
ICFC



For research use only. Not for diagnostic use. Not for resale. BioLegend will not be held responsible for patent infringement or other violations that may occur with the use of our products.



*These products may be covered by one or more Limited Use Label Licenses (see the BioLegend Catalog or our website, www.biolegend.com/ordering#license). BioLegend products may not be transferred to third parties, resold, modified for resale, or used to manufacture commercial products, reverse engineer functionally similar materials, or to provide a service to third parties without written approval of BioLegend. By use of these products you accept the terms and conditions of all applicable Limited Use Label Licenses. Unless otherwise indicated, these products are for research use only and are not intended for human or animal diagnostic, therapeutic or commercial use.

PE Rat IgG2a, κ Isotype Ctrl

RTK2758

FC, ICFC



For research use only. Not for diagnostic use. Not for resale. BioLegend will not be held responsible for patent infringement or other violations that may occur with the use of our products.



*These products may be covered by one or more Limited Use Label Licenses (see the BioLegend Catalog or our website, www.biolegend.com/ordering#license). BioLegend products may not be transferred to third parties, resold, modified for resale, or used to manufacture commercial products, reverse engineer functionally similar materials, or to provide a service to third parties without written approval of BioLegend. By use of these products you accept the terms and conditions of all applicable Limited Use Label Licenses. Unless otherwise indicated, these products are for research use only and are not intended for human or animal diagnostic, therapeutic or commercial use.

BioLegend Inc., 9727 Pacific Heights Blvd, San Diego, CA 92121 www.biolegend.com
Toll-Free Phone: 1-877-Bio-Legend (246-5343) Phone: (858) 768-5800 Fax: (877) 455-9587