

Product Data Sheet

Alexa Fluor® 488 anti-human IL-12/IL-23 p40

Catalog # / Size: 501816 / 100 tests

Clone: C11.5

Isotype: Mouse IgG1, κ

Immunogen: CHO-expressed, recombinant human IL-12 p70 heterodimer

Reactivity: Human, IL-12/IL-23 p40 subunit (monomer, homodimer and heterodimer IL-12 p35/p40 or IL-23 p19/p40)

Preparation: The antibody was purified by affinity chromatography, and conjugated with Alexa Fluor® 488 under optimal conditions. The solution is free of unconjugated Alexa Fluor® 488.

Formulation: Phosphate-buffered solution, pH 7.2, containing 0.09% sodium azide, 0.2% (w/v) BSA (USA origin).

Storage: The antibody solution should be stored undiluted at 4°C and protected from prolonged exposure to light. **Do not freeze.**

Applications:

Applications: ICFC - *Quality tested*

Recommended Usage: Each lot of this antibody is quality control tested by intracellular immunofluorescent staining with flow cytometric analysis. For immunofluorescent staining, the suggested use of this reagent is 5 μ l per 10⁶ cells in 100 μ l volume. It is recommended that the reagent be titrated for optimal performance for each application.

* Alexa Fluor® 488 has a maximum emission of 519 nm when it is excited at 488 nm.

** Alexa Fluor® is a registered trademark of Molecular Probes, Inc. Alexa Fluor® dye antibody conjugates are sold under license from Molecular Probes, Inc. for research use only, except for use in combination with microarrays and high content screening, and are covered by pending and issued patents.

Application Notes: **Flow Cytometry^{3,5}:** The fluorochrome-labeled C11.5 antibody is useful for intracellular immunofluorescent staining and flow cytometric analysis to identify IL-12 p40 (monomeric, heterodimeric, homodimeric) -producing cells within mixed cell populations. For intracellular cytokine staining protocol, please visit www.biolegend.com and click on the support section.

Neutralization⁶: The LEAF™ purified antibody (Endotoxin **Additional reported applications (for the relevant formats) include:** Western blotting, ELISA Capture^{1,2}, ICFC Blocking, immunohistochemical staining⁴ of paraformaldehyde-fixed, saponin-treated tissue frozen sections, and immunocytochemistry.

Note: For testing human IL-12/IL-23 p40 (monomer, dimer) in serum or plasma, BioLegend's ELISA Max™ Sets (Cat. No. 430701 to 430706) are specially developed and recommended. For testing human IL-12 p70 in serum or plasma, BioLegend's ELISA Max™ Sets (Cat. No. 431701 to 431706) are specially developed and recommended.

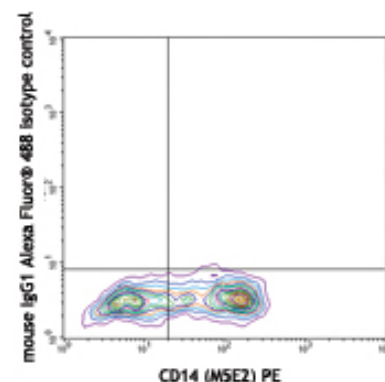
Application References:

1. D'Andrea A, *et al.* 1992. *J. Exp. Med.* 176:1387.
2. D'Andrea A, *et al.* 1993. *J. Exp. Med.* 178:1041.
3. Prussin C, *et al.* 1995. *J. Immunol. Meth.* 188:117.
4. Leifeld L, *et al.* 2002. *Hepatology* 36:1001.
5. Pekkari K, *et al.* 2001. *Blood* 97:3184.
6. Bolovan-Fritts CA, *et al.* 2004. *J. Virol.* 78:13173.

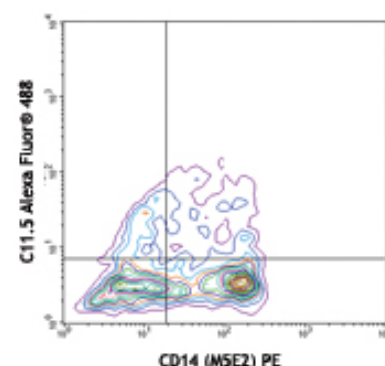
Description: The C11.5 antibody reacts with human IL-12 p40 subunit of the IL-12 p70 heterodimer and IL-23 p40 subunit of the IL-23 p19/p40, as well as p40 monomer and homodimer. The C11.5 antibody can neutralize the bioactivity of natural or recombinant IL-12 p70.

Antigen References:

1. Fitzgerald K, *et al.* Eds. 2001. *The Cytokine FactsBook*. Academic Press San Diego.
2. Quesniaux V. 1992. *Research Immunol.* 143:385.
3. Trinchieri G, *et al.* 1992 *Prog. Growth Factor Res.* 4:355.
4. Trinchieri G, *et al.* 1993 *Immunol. Today.* 14:335.



IFN- γ -primed and then LPS-stimulated (overnight) human peripheral blood monocytes surface stained with CD14 (M5E2) PE and intracellular stained with mouse IgG1 Alexa Fluor® 488 isotype control (upper panel) or C11.5 Alexa Fluor® 488 (lower panel)



For research use only. Not for diagnostic use. Not for resale. BioLegend will not be held responsible for patent infringement or other violations that may occur with the use of our products.

*These products may be covered by one or more Limited Use Label Licenses (see the BioLegend Catalog or our website, www.biolegend.com/ordering#license). BioLegend products may not be transferred to third parties, resold, modified for resale, or used to manufacture commercial products, reverse engineer functionally similar materials, or to provide a service to third parties without written approval of BioLegend. By use of these products you accept the terms and conditions of all applicable Limited Use Label Licenses. Unless otherwise indicated, these products are for research use only and are not intended for human or animal diagnostic, therapeutic or commercial use.

5. Oppmann B, *et al.* 2000 *Immunity*. 13:715.
6. Aggarwal S, *et al.* 2003 *J. Biol. Chem.* 278:1910.
7. Parham C, *et al.* 2002 *J. Immunol.* 168:5699.
8. Belladonna ML, *et al.* 2002 *J. Immunol.* 168:5448.
9. Lankford CS, *et al.* 2003 *J. Leukoc. Biol.* 73:49.

Related Products:	Product	Clone	Application
	Cell Staining Buffer		FC, ICC, ICFC
	Fixation Buffer		ICC, ICFC
	Permeabilization Wash Buffer (10X)		ICC, ICFC,
			IHC
	Brefeldin A Solution (1,000X)		ICFC
	Monensin Solution (1,000X)		ICFC
	7-AAD Viability Staining Solution		FC
	Alexa Fluor® 488 Mouse IgG1, κ Isotype	MOPC-21	ICFC, IF
	Ctrl (ICFC)		



For research use only. Not for diagnostic use. Not for resale. BioLegend will not be held responsible for patent infringement or other violations that may occur with the use of our products.



*These products may be covered by one or more Limited Use Label Licenses (see the BioLegend Catalog or our website, www.biolegend.com/ordering#license). BioLegend products may not be transferred to third parties, resold, modified for resale, or used to manufacture commercial products, reverse engineer functionally similar materials, or to provide a service to third parties without written approval of BioLegend. By use of these products you accept the terms and conditions of all applicable Limited Use Label Licenses. Unless otherwise indicated, these products are for research use only and are not intended for human or animal diagnostic, therapeutic or commercial use.