

Product Data Sheet

Alexa Fluor® 700 anti-mouse IL-2

Catalog # / Size: 503818 / 100 µg

Clone: JES6-5H4

Isotype: Rat IgG2b, κ

Immunogen: *E. coli*-expressed, recombinant mouse IL-2

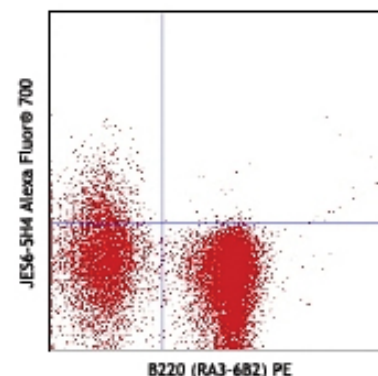
Reactivity: Mouse

Preparation: The antibody was purified by affinity chromatography, and conjugated with Alexa Fluor® 700 under optimal conditions. The solution is free of unconjugated Alexa Fluor® 700.

Formulation: Phosphate-buffered solution, pH 7.2, containing 0.09% sodium azide.

Concentration: 0.5 mg/ml

Storage: The antibody solution should be stored undiluted at 4°C and protected from prolonged exposure to light. **Do not freeze.**



PMA+ionomycin-stimulated C57BL/6 mouse splenocytes (6 hours) stained with B220 (RA3-6B2) PE and intracellularly stained with JES6-5H4 Alexa Fluor® 700

Applications:

Applications: ICFC - *Quality tested*

Recommended Usage: Each lot of this antibody is quality control tested by intracellular immunofluorescent staining with flow cytometric analysis. For immunofluorescent staining, the suggested use of this reagent is ≤ 0.25 µg per 10^6 cells in 100 µl volume. It is highly recommended that the reagent be titrated for optimal performance for each application.

* Alexa Fluor® 700 has a maximum emission of 719 nm when it is excited at 633nm / 635nm. Prior to using Alexa Fluor® 700 conjugate for flow cytometric analysis, please verify your flow cytometer's capability of exciting and detecting the fluorochrome.

** Alexa Fluor® is a registered trademark of Molecular Probes, Inc. Alexa Fluor® dye antibody conjugates are sold under license from Molecular Probes, Inc. for research use only, except for use in combination with microarrays and high content screening, and are covered by pending and issued patents.

Application Notes: **ELISA Detection¹⁻³ or ELISPOT Detection⁴⁻⁶:** The biotinylated JES6-5H4 antibody is useful as a detection antibody for a sandwich ELISA or ELISPOT assay, when used in conjunction with the purified JES6-1A12 antibody (Cat. No. 503702/503704) as capture antibody and recombinant mouse IL-2 (Cat. No. 575409) as the standard.

Flow Cytometry⁸⁻¹⁰: The fluorochrome-labeled JES6-5H4 antibody is useful for intracellular immunofluorescent staining and flow cytometric analysis to identify IL-2-producing cells within mixed cell populations.

Neutralization^{1,7}: The LEAF™ purified antibody (Endotoxin in vivo and *in vitro* (Cat. No. 503812) is recommended for neutralization.

Additional reported applications (for the relevant formats) include: immunoprecipitation¹, immunohistochemical staining of paraformaldehyde-fixed, saponin-treated frozen tissue sections², *in vivo* capture⁷, and immunocytochemistry.

Note: For testing mouse IL-2 in serum, plasma or supernatant, BioLegend's ELISA Max™ Sets (Cat. No. 431001 to 431006) are specially developed and recommended.

Application References:

1. Abrams J, *et al.* 1992. *Immunol. Rev.* 127:5.
2. Sander B, *et al.* 1993. *J. Immunol. Meth.* 166:201.
3. Abrams J. 1995. *Curr. Prot. Immunol.* John Wiley and Sons New York. Unit 6.20.
4. Klinman D, *et al.* 1994. *Curr. Prot. Immunol.* John Wiley and Sons New York. Unit 6.19.
5. Mo X, *et al.* 1995. *J. Virol.* 69:1288.
6. Karulin A, *et al.* 2000. *J. Immunol.* 164:1862.
7. Finkelman F, *et al.* 2003. *Curr. Prot. Immunol.* John Wiley & Sons New York. Unit 6.28.
8. Ko SY, *et al.* 2005. *J. Immunol.* 175:3309. PubMed
9. Kang SS and Allen PM. 2005. *J. Immunol.* 174:5382.
10. Lawson BR, *et al.* 2007. *J. Immunol.* 178:5366.

Description: IL-2 is a potent lymphoid cell growth factor which exerts its biological activity primarily on T cells. Additionally, IL-2 has been found to stimulate growth and differentiation of B cells, NK cells, LAK cells, monocytes, and oligodendrocytes.

Antigen References: 1. Fitzgerald K, *et al.* Eds. 2001. *The Cytokine FactsBook*. Academic Press San Diego.
2. Taniguchi T, *et al.* 1993. *Cell* 73:5.



For research use only. Not for diagnostic use. Not for resale. BioLegend will not be held responsible for patent infringement or other violations that may occur with the use of our products.



*These products may be covered by one or more Limited Use Label Licenses (see the BioLegend Catalog or our website, www.biollegend.com/ordering#license). BioLegend products may not be transferred to third parties, resold, modified for resale, or used to manufacture commercial products, reverse engineer functionally similar materials, or to provide a service to third parties without written approval of BioLegend. By use of these products you accept the terms and conditions of all applicable Limited Use Label Licenses. Unless otherwise indicated, these products are for research use only and are not intended for human or animal diagnostic, therapeutic or commercial use.

3. Nistico G. 1993. *Prog. Neurobiol.* 40:463.
4. Waldmann T, *et al.* 1993. *Ann. NY Acad. Sci.* 685:603.

Related Products:	Product	Clone	Application
	Cell Staining Buffer		FC, ICC, ICFC
	Fixation Buffer		ICC, ICFC
	Permeabilization Wash Buffer (10X)		ICC, ICFC, IHC
	Brefeldin A Solution (1,000X)		ICFC
	Monensin Solution (1,000X)		ICFC
	7-AAD Viability Staining Solution		FC
	Alexa Fluor® 700 Rat IgG2b, κ Isotype	RTK4530	FC, ICFC
	Ctrl		



For research use only. Not for diagnostic use. Not for resale. BioLegend will not be held responsible for patent infringement or other violations that may occur with the use of our products.



*These products may be covered by one or more Limited Use Label Licenses (see the BioLegend Catalog or our website, www.biollegend.com/ordering#license). BioLegend products may not be transferred to third parties, resold, modified for resale, or used to manufacture commercial products, reverse engineer functionally similar materials, or to provide a service to third parties without written approval of BioLegend. By use of these products you accept the terms and conditions of all applicable Limited Use Label Licenses. Unless otherwise indicated, these products are for research use only and are not intended for human or animal diagnostic, therapeutic or commercial use.