

PE anti-mouse IL-2

Catalog # / Size: 503807 / 25 µg
503808 / 100 µg

Clone: JES6-5H4

Isotype: Rat IgG2b, κ

Immunogen: *E. coli*-expressed, recombinant mouse IL-2

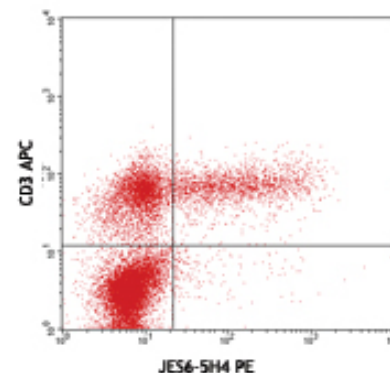
Reactivity: Mouse

Preparation: The antibody was purified by affinity chromatography, and conjugated with PE under optimal conditions. The solution is free of unconjugated PE and unconjugated antibody.

Formulation: Phosphate-buffered solution, pH 7.2, containing 0.09% sodium azide.

Concentration: 0.2 mg/ml

Storage: The antibody solution should be stored undiluted at 4°C and protected from prolonged exposure to light. **Do not freeze.**



PMA+ionomycin-stimulated C57BL/6 mouse splenocytes intracellular stained with CD3 (17A2) APC and JES6-5H4 PE

Applications:

Applications: ICFC - Quality tested

Recommended Usage: Each lot of this antibody is quality control tested by intracellular immunofluorescent staining with flow cytometric analysis. For immunofluorescent staining, the suggested use of this reagent is ≤1.0 µg per million cells in 100 µl volume. It is recommended that the reagent be titrated for optimal performance for each application.

Application Notes: **ELISA Detection¹⁻³ or ELISPOT Detection⁴⁻⁶:** The biotinylated JES6-5H4 antibody is useful as a detection antibody for a sandwich ELISA or ELISPOT assay, when used in conjunction with the purified JES6-1A12 antibody (Cat. No. 503702/503704) as capture antibody and recombinant mouse IL-2 (Cat. No. 575409) as the standard. **Flow Cytometry⁸⁻¹⁰:** The fluorochrome-labeled JES6-5H4 antibody is useful for intracellular immunofluorescent staining and flow cytometric analysis to identify IL-2-producing cells within mixed cell populations. **Neutralization^{1,7}:** The LEAF™ purified antibody (Endotoxin in vivo and *in vitro* (Cat. No. 503812) is recommended for neutralization.

Additional reported applications (for the relevant formats) include: immunoprecipitation¹, immunohistochemical staining of paraformaldehyde-fixed, saponin-treated frozen tissue sections², *in vivo* capture⁷, and immunocytochemistry.

Note: For testing mouse IL-2 in serum, plasma or supernatant, BioLegend's ELISA Max™ Sets (Cat. No. 431001 to 431006) are specially developed and recommended.

- Application References:**
- Abrams J, *et al.* 1992. *Immunol. Rev.* 127:5.
 - Sander B, *et al.* 1993. *J. Immunol. Meth.* 166:201.
 - Abrams J. 1995. *Curr. Prot. Immunol.* John Wiley and Sons New York. Unit 6.20.
 - Klinman D, *et al.* 1994. *Curr. Prot. Immunol.* John Wiley and Sons New York. Unit 6.19.
 - Mo X, *et al.* 1995. *J. Virol.* 69:1288.
 - Karulin A, *et al.* 2000. *J. Immunol.* 164:1862.
 - Finkelman F, *et al.* 2003. *Curr. Prot. Immunol.* John Wiley & Sons New York. Unit 6.28.
 - Ko SY, *et al.* 2005. *J. Immunol.* 175:3309. PubMed
 - Kang SS and Allen PM. 2005. *J. Immunol.* 174:5382.
 - Lawson BR, *et al.* 2007. *J. Immunol.* 178:5366.

Description: IL-2 is a potent lymphoid cell growth factor which exerts its biological activity primarily on T cells. Additionally, IL-2 has been found to stimulate growth and differentiation of B cells, NK cells, LAK cells, monocytes, and oligodendrocytes.

- Antigen References:**
- Fitzgerald K, *et al.* Eds. 2001. *The Cytokine FactsBook.* Academic Press San Diego.
 - Taniguchi T, *et al.* 1993. *Cell* 73:5.
 - Nistico G. 1993. *Prog. Neurobiol.* 40:463.
 - Waldmann T, *et al.* 1993. *Ann. NY Acad. Sci.* 685:603.

Related Products:

Product
Cell Staining Buffer
Fixation Buffer
Permeabilization Wash Buffer (10X)
Brefeldin A Solution (1,000X)
Monensin Solution (1,000X)
PE Rat IgG2b, κ Isotype Ctrl

Clone

RTK4530

Application

FC, ICC, ICFC
ICC, ICFC
ICC, ICFC, IHC
ICFC
ICFC
FC, ICFC



For research use only. Not for diagnostic use. Not for resale. BioLegend will not be held responsible for patent infringement or other violations that may occur with the use of our products.



*These products may be covered by one or more Limited Use Label Licenses (see the BioLegend Catalog or our website, www.biolegend.com/ordering#license). BioLegend products may not be transferred to third parties, resold, modified for resale, or used to manufacture commercial products, reverse engineer functionally similar materials, or to provide a service to third parties without written approval of BioLegend. By use of these products you accept the terms and conditions of all applicable Limited Use Label Licenses. Unless otherwise indicated, these products are for research use only and are not intended for human or animal diagnostic, therapeutic or commercial use.