

## PE anti-mouse IL-6

**Catalog # / Size:** 504503 / 25 µg  
504504 / 100 µg

**Clone:** MP5-20F3

**Isotype:** Rat IgG1, κ

**Immunogen:** COS-7-expressed, recombinant mouse IL-6

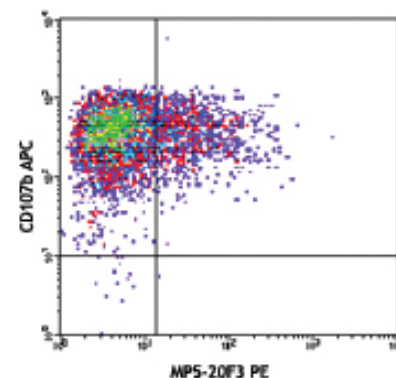
**Reactivity:** Mouse

**Preparation:** The antibody was purified by affinity chromatography, and conjugated with PE under optimal conditions. The solution is free of unconjugated PE and unconjugated antibody.

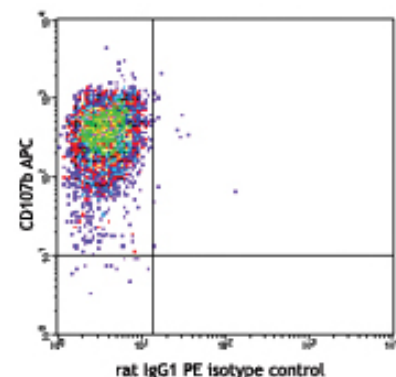
**Formulation:** Phosphate-buffered solution, pH 7.2, containing 0.09% sodium azide.

**Concentration:** 0.2 mg/ml

**Storage:** The antibody solution should be stored undiluted at 4°C and protected from prolonged exposure to light. **Do not freeze.**



Thioglycollate-elicited C57BL/6 mouse peritoneal macrophages were stimulated with LPS for 6 hours (in the presence of monensin), then surface stained with anti-mouse CD107b/Mac-3 APC. This was followed by fixation and permeabilization and then stained with anti-mouse IL-6 (MP5-20F3) PE (top) or rat IgG1, κ PE isotype control (bottom).



## Applications:

**Applications:** ICFC - Quality tested

**Recommended Usage:** The MP5-20F3 antibody reacts with mouse interleukin-6 (IL-6). The MP5-20F3 antibody can neutralize the bioactivity of natural or recombinant IL-6. Each lot of this antibody is quality control tested by intracellular immunofluorescent staining with flow cytometric analysis. For immunofluorescent staining, the suggested use of this reagent is ≤ 0.25 µg per 10<sup>6</sup> cells in 100 µl volume. It is recommended that the reagent be titrated for optimal performance for each application.

**Application Notes:** **ELISA Capture<sup>1-3,11</sup> or ELISPOT Capture<sup>4,5</sup>:** The purified MP5-20F3 antibody is useful as the capture antibody in a sandwich ELISA or ELISPOT assay, when used in conjunction with the biotinylated MP5-32C11 antibody (Cat. No. 504602) as the detecting antibody and recombinant mouse IL-6 (Cat. No. 563401) as the standard. The LEAF™ purified antibody is suggested for ELISPOT capture.

**Flow Cytometry:** The fluorochrome-labeled MP5-20F3 antibody is useful for intracellular immunofluorescent staining and flow cytometric analysis to identify IL-6-producing cells within mixed cell populations. For intracellular cytokine staining protocol, please visit [www.biolegend.com](http://www.biolegend.com) and click on the support section.

**Neutralization<sup>1-2,8-10</sup>:** The LEAF™ purified antibody (Endotoxin <0.1 EU/µg, Azide-Free, 0.2 µm filtered) is recommended for neutralization of mouse IL-6 bioactivity *in vivo* and *in vitro* (Cat. No. 504506). **Additional reported applications (for relevant formats of this clone) include:** *In Vivo* Capture<sup>7</sup>, and immunohistochemical staining (paraformaldehyde-fixed/saponin-treated<sup>6</sup>, and acetone-fixed frozen tissue sections<sup>13, 14</sup>). **Note:** For testing mouse IL-6 in serum, plasma or supernatant, BioLegend's ELISA Max™ Sets (Cat. No. 431301 to 431306) are specially developed and recommended.

### Application References:

- Abrams J, *et al.* 1992. *Immunol. Rev.* 127:5. (ELISA Capture, Neut)
- Sander B, *et al.* 1993. *J. Immunol. Meth.* 166:201. (ELISA Capture, Neut)
- Abrams J, 1995. *Curr. Prot. Immunol.* John Wiley and Sons, New York. Unit 6.20. (ELISA Capture)
- Fujihashi K, *et al.* 1991. *J. Immunol. Meth.* 160:181. (ELISPOT Capture)
- Klinman D, *et al.* 1994. *Curr. Prot. Immunol.* John Wiley and Sons, New York. Unit 6.19. (ELISPOT Capture)
- Litton M, *et al.* 1994. *J. Immunol. Meth.* 175:47. (IHC)
- Finkelman F, *et al.* 2003. *Curr. Prot. Immunol.* John Wiley & Sons, New York. Unit 6.28. (*In Vivo* Capture)
- Starnes HF Jr, *et al.* 1990. *J. Immunol.* 145:4185. (Neut)
- Riedemann NC, *et al.* 2003. *J. Immunol.* 170:503. (Neut)
- Rochman I, *et al.* 2005. *J. Immunol.* 174:4761. (Neut)
- O'Connell PJ, *et al.* 2006. *Blood* 107:1010. (ELISA Capture)
- Ozeki Y, *et al.* 2010. *Int. Immunol.* 22:179. PubMed
- Galie M, *et al.* 2005. *Carcinogenesis* 26:1868 (IHC)
- Schone MP, *et al.* 2000. *J Immunol* 165:6583 (IHC)

**Description:** IL-6 is a potent lymphoid cell growth factor that stimulates the growth and survivability of certain B cells and T cells.



For research use only. Not for diagnostic use. Not for resale. BioLegend will not be held responsible for patent infringement or other violations that may occur with the use of our products.



\*These products may be covered by one or more Limited Use Label Licenses (see the BioLegend Catalog or our website, [www.biolegend.com/ordering#license](http://www.biolegend.com/ordering#license)). BioLegend products may not be transferred to third parties, resold, modified for resale, or used to manufacture commercial products, reverse engineer functionally similar materials, or to provide a service to third parties without written approval of BioLegend. By use of these products you accept the terms and conditions of all applicable Limited Use Label Licenses. Unless otherwise indicated, these products are for research use only and are not intended for human or animal diagnostic, therapeutic or commercial use.

IL-6 plays a role in host defense, acute phase reactions, immune responses, and hematopoiesis. IL-6 is expressed by T cells, B cells, monocytes, fibroblasts, hepatocytes, endothelial cells and keratinocytes.

- Antigen References:**
1. Fitzgerald K, *et al.* Eds. 2001. The Cytokine FactsBook. Academic Press, San Diego.
  2. Hirano T. 1998. *Intl. Rev. Immunol.* 16:249.
  3. Patterson P. 1992. *Curr. Opin. Neurobiol.* 2:94.
  4. Van Oers M, *et al.* 1993. *Ann. Hematology* 66:219.

<b>Related Products:</b>	<b>Product</b>	<b>Clone</b>	<b>Application</b>
	Cell Staining Buffer		FC, ICC, ICFC
	Fixation Buffer		ICC, ICFC
	Permeabilization Wash Buffer (10X)		ICC, ICFC, IHC
	Brefeldin A Solution (1,000X)		ICFC
	Monensin Solution (1,000X)		ICFC
	RBC Lysis Buffer (10X)		FC, ICFC
	PE Rat IgG1, $\kappa$ Isotype Ctrl	RTK2071	FC, ICFC



For research use only. Not for diagnostic use. Not for resale. BioLegend will not be held responsible for patent infringement or other violations that may occur with the use of our products.



\*These products may be covered by one or more Limited Use Label Licenses (see the BioLegend Catalog or our website, [www.biolegend.com/ordering#license](http://www.biolegend.com/ordering#license)). BioLegend products may not be transferred to third parties, resold, modified for resale, or used to manufacture commercial products, reverse engineer functionally similar materials, or to provide a service to third parties without written approval of BioLegend. By use of these products you accept the terms and conditions of all applicable Limited Use Label Licenses. Unless otherwise indicated, these products are for research use only and are not intended for human or animal diagnostic, therapeutic or commercial use.