

# Product Data Sheet

## PE anti-mouse IL-12/IL-23 p40 (monomer, dimer, heterodimer)

**Catalog # / Size:** 505203 / 25 µg  
505204 / 100 µg

**Clone:** C15.6

**Isotype:** Rat IgG1, κ

**Immunogen:** CHO-expressed, recombinant mouse IL-12 p70

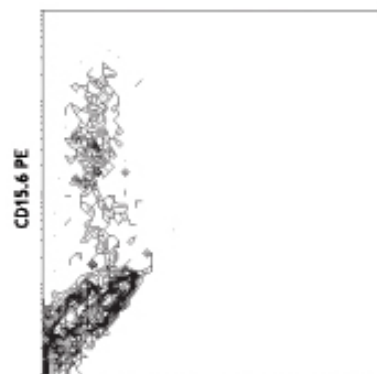
**Reactivity:** Mouse, IL-12/IL-23 p40 subunit (monomer, homodimer and heterodimer IL-12 p35/p40 or IL-23 p19/p40)

**Preparation:** The antibody was purified by affinity chromatography, and conjugated with PE under optimal conditions. The solution is free of unconjugated PE and unconjugated antibody.

**Formulation:** Phosphate-buffered solution, pH 7.2, containing 0.09% sodium azide.

**Concentration:** 0.2 mg/ml

**Storage:** The antibody solution should be stored undiluted at 4°C and protected from prolonged exposure to light. **Do not freeze.**



*rmIFN-γ/LPS stimulated BALB/c peritoneal macrophages were stained with C15.6 PE*

## Applications:

**Applications:** ICFC - Quality tested

**Recommended Usage:** Each lot of this antibody is quality control tested by intracellular immunofluorescent staining with flow cytometric analysis. For immunofluorescent staining, the suggested use of this reagent is ≤1.0 µg per million cells in 100 µl volume. It is recommended that the reagent be titrated for optimal performance for each application.

**Application Notes:** **ELISA or ELISPOT Capture<sup>1,2,4,6,8,10</sup>:** The purified C15.6 antibody is useful as the capture antibody in a sandwich ELISA or ELISPOT assay, when used in conjunction with the biotinylated C17.8 (Cat. No. 505302) antibody as the detecting antibody. This assay detects p40 as monomer, homodimer, or heterodimer complexed with p35. The LEAF™ purified antibody is suggested for ELISPOT capture.

**Additional reported applications (for the relevant formats) include:** immunohistochemical staining<sup>9</sup> of paraformaldehyde-fixed saponin-treated frozen tissue sections, immunoprecipitation<sup>3</sup>, Western blotting<sup>3</sup>, and immunocytochemistry.

**Note:** For testing mouse IL-12 p40 (monomer, dimer, heteromer) in serum or plasma, BioLegend's ELISA Max™ Sets (Cat. No. 431601 to 431606) are specially developed and recommended.

- Application References:**
1. Kitagaki K, *et al.* 2002. *Clin. Diagn. Lab Immunol.* 9:1260.
  2. Reichmann G, *et al.* 1999. *J. Immunol.* 163:3354.
  3. Wysocka M, *et al.* 1995. *Eur. J. Immunol.* 25:672.
  4. Gately M. 1995. *Curr. Prot. Immunol.* John Wiley and Sons, New York. Unit 6.16.
  5. Macatonia S, *et al.* 1995. *J. Immunol.* 154:5071.
  6. O'Connell PJ, *et al.* 2006. *Blood* 107:1010.
  7. Akilov OE, *et al.* 2007. *J. Leukocyte Biol.* 2007;10.1189/jlb.0706439.
  8. Dzhagalov I, *et al.* 2007. *J. Immunol.* 178:2113.
  9. Huang LY, *et al.* 2001. *J. Immunol.* 167:1423.
  10. Xu G, *et al.* 2007. *J. Immunol.* 179:5358. PubMed
  11. Charles N, *et al.* 2010. *Nat. Med.* 16:701. (FC) PubMed

**Description:** The C15.6 antibody reacts with mouse IL-12 p40 subunit of the IL-12 p70 and IL-23 p40 subunit of the IL-23 p19/p40, as well as p40 monomer and homodimer, or heterodimer. The C15.6 antibody can not neutralize the bioactivity of natural or recombinant IL-12.

**Antigen References:**

1. Fitzgerald K, *et al.* Eds. 2001. *The Cytokine FactsBook*. Academic Press, San Diego.
2. Quesniaux V. 1992. *Research Immunol.* 143:385.
3. Trinchieri G, *et al.* 1992 *Prog. Growth Factor Res.* 4:355.
4. Trinchieri G, *et al.* 1993 *Immunol. Today.* 14:335.
5. Oppmann B, *et al.* 2000 *Immunity.* 13:715.
6. Aggarwal S, *et al.* 2003 *J. Biol. Chem.* 278:1910.
7. Parham C, *et al.* 2002 *J. Immunol.* 168:5699.
8. Belladonna ML, *et al.* 2002 *J. Immunol.* 168:5448.
9. Lankford, CS, *et al.* 2003 *J. Leukocyte Biol.* 73:49.

### Related Products:

Product  
Cell Staining Buffer  
Fixation Buffer  
Permeabilization Wash Buffer (10X)

### Clone

### Application

FC, ICC, ICFC  
ICC, ICFC  
ICC, ICFC, IHC



For research use only. Not for diagnostic use. Not for resale. BioLegend will not be held responsible for patent infringement or other violations that may occur with the use of our products.



\*These products may be covered by one or more Limited Use Label Licenses (see the BioLegend Catalog or our website, [www.biolegend.com/ordering#license](http://www.biolegend.com/ordering#license)). BioLegend products may not be transferred to third parties, resold, modified for resale, or used to manufacture commercial products, reverse engineer functionally similar materials, or to provide a service to third parties without written approval of BioLegend. By use of these products you accept the terms and conditions of all applicable Limited Use Label Licenses. Unless otherwise indicated, these products are for research use only and are not intended for human or animal diagnostic, therapeutic or commercial use.

Brefeldin A Solution (1,000X)  
Monensin Solution (1,000X)  
PE Rat IgG1,  $\kappa$  Isotype Ctrl

RTK2071

ICFC  
ICFC  
FC, ICFC



For research use only. Not for diagnostic use. Not for resale. BioLegend will not be held responsible for patent infringement or other violations that may occur with the use of our products.



\*These products may be covered by one or more Limited Use Label Licenses (see the BioLegend Catalog or our website, [www.biolegend.com/ordering#license](http://www.biolegend.com/ordering#license)). BioLegend products may not be transferred to third parties, resold, modified for resale, or used to manufacture commercial products, reverse engineer functionally similar materials, or to provide a service to third parties without written approval of BioLegend. By use of these products you accept the terms and conditions of all applicable Limited Use Label Licenses. Unless otherwise indicated, these products are for research use only and are not intended for human or animal diagnostic, therapeutic or commercial use.

BioLegend Inc., 9727 Pacific Heights Blvd, San Diego, CA 92121 [www.biolegend.com](http://www.biolegend.com)  
Toll-Free Phone: 1-877-Bio-Legend (246-5343) Phone: (858) 768-5800 Fax: (877) 455-9587