

FITC anti-human Granzyme A

Catalog # / Size: 507204 / 100 tests

Clone: CB9

Isotype: Mouse IgG1, κ

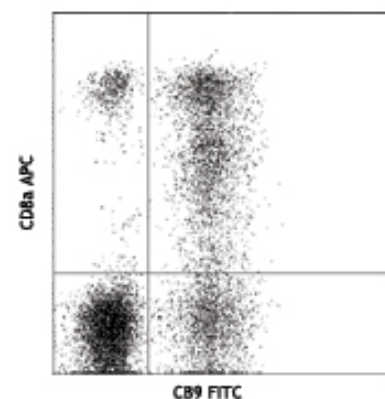
Immunogen: Purified human Granzyme A

Reactivity: Human

Preparation: The antibody was purified by affinity chromatography, and conjugated with FITC under optimal conditions. The solution is free of unconjugated FITC.

Formulation: Phosphate-buffered solution, pH 7.2, containing 0.09% sodium azide and 0.2% (w/v) BSA (origin USA).

Storage: The antibody solution should be stored undiluted at 4°C and protected from prolonged exposure to light. **Do not freeze.**



Human peripheral blood lymphocytes surface stained with CD8a APC and then intracellularly stained with CB9 FITC

Applications:

Applications: ICFC - *Quality tested*

Recommended Usage: Each lot of this antibody is quality control tested by intracellular immunofluorescent staining with flow cytometric analysis. **Test size products are transitioning from 20 μ l to 5 μ l per test.** Please check your vial or your CoA to find the suggested use of this reagent per million cells in 100 μ l staining volume or per 100 μ l of whole blood. It is recommended that the reagent be titrated for optimal performance for each application. Read more at www.biolegend.com/testsize regarding the test size change.

Application Notes: Additional reported applications (for the relevant formats) include: immunohistochemical staining³ of formalin-fixed paraffin-embedded tissue sections, and immunoprecipitation².

Application References:

1. Trimble L, *et al.* 1998. *Blood* 91:585.
2. Beresford P, *et al.* 1997. *P. Natl. Acad. Sci. USA* 94:9285.
3. Raqib R, *et al.* 2002. *Infect. Immun.* 70:3199.
4. Chen H, *et al.* 2005. *J. Immunol.* 175:591.
5. Xu X, *et al.* 2012. *PLoS One.* 7:e41869. PubMed.

Description: Granzyme A is a 28 kD disulfide-linked homodimeric protein and the most abundant of the proteases occurring in CTL granules. It is homologous to other serine esterases, including other granzymes, mast cell proteases, and neutrophil cathepsins. Granzyme B is thought to be a rapidly-acting apoptotic enzyme, while Granzyme A is slow acting. The CB9 monoclonal antibody recognizes human Granzyme A and has been shown to be useful for flow cytometry, immunoprecipitation, and immunohistochemistry (paraffin-embedded sections).

Antigen References:

1. Brune J, *et al.* 1986. *Nature* 322:268.
2. Fan Z, *et al.* 2003. *Nature Immunol.* 4:145.
3. Fan Z, *et al.* 2003. *Cell* 112:659.
4. Masson D, *et al.* 1987. *Cell* 49:679.

Related Products:	Product	Clone	Application
	FITC anti-human Perforin	dG9	ICFC
	Cell Staining Buffer		FC, ICC, ICFC
	Fixation Buffer		ICC, ICFC
	Permeabilization Wash Buffer (10X)		ICC, ICFC, IHC
	RBC Lysis Buffer (10X)		FC, ICFC
	Brefeldin A Solution (1,000X)		ICFC
	Monensin Solution (1,000X)		ICFC
	FITC Mouse IgG1, κ Isotype Ctrl (ICFC)	MOPC-21	ICFC



For research use only. Not for diagnostic use. Not for resale. BioLegend will not be held responsible for patent infringement or other violations that may occur with the use of our products.



*These products may be covered by one or more Limited Use Label Licenses (see the BioLegend Catalog or our website, www.biolegend.com/ordering#license). BioLegend products may not be transferred to third parties, resold, modified for resale, or used to manufacture commercial products, reverse engineer functionally similar materials, or to provide a service to third parties without written approval of BioLegend. By use of these products you accept the terms and conditions of all applicable Limited Use Label Licenses. Unless otherwise indicated, these products are for research use only and are not intended for human or animal diagnostic, therapeutic or commercial use.