

## Purified anti-human Granzyme A

**Catalog # / Size:** 507202 / 100 µg

**Clone:** CB9

**Isotype:** Mouse IgG1, κ

**Immunogen:** Purified human Granzyme A

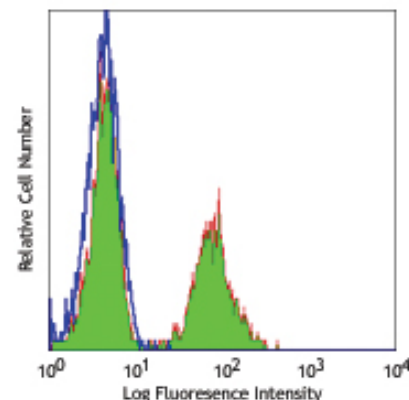
**Reactivity:** Human

**Preparation:** The antibody was purified by affinity chromatography.

**Formulation:** Phosphate-buffered solution, pH 7.2, containing 0.09% sodium azide.

**Concentration:** 0.5 mg/ml

**Storage:** The antibody solution should be stored undiluted at 4°C.



Human peripheral blood lymphocytes intracellularly stained with purified CB9, followed by anti-mouse IgG FITC

## Applications:

**Applications:** ICFC - *Quality tested*  
 IP, IHC - *Reported in the literature*

**Recommended Usage:** Each lot of this antibody is quality control tested by intracellular immunofluorescent staining with flow cytometric analysis. For immunofluorescent staining, the suggested use of this reagent is ≤ 0.5 µg per million cells in 100 µl volume or 100 µl of whole blood. It is recommended that the reagent be titrated for optimal performance for each application.

**Application Notes:** Additional reported applications (for the relevant formats) include: immunohistochemical staining<sup>3</sup> of formalin-fixed paraffin-embedded tissue sections, and immunoprecipitation<sup>2</sup>.

**Application References:**

1. Trimble L, *et al.* 1998. *Blood* 91:585.
2. Beresford P, *et al.* 1997. *P. Natl. Acad. Sci. USA* 94:9285.
3. Raqib R, *et al.* 2002. *Infect. Immun.* 70:3199.
4. Chen H, *et al.* 2005. *J. Immunol.* 175:591.

**Description:** Granzyme A is a 28 kD disulfide-linked homodimeric protein and the most abundant of the proteases occurring in CTL granules. It is homologous to other serine esterases, including other granzymes, mast cell proteases, and neutrophil cathepsins. Granzyme B is thought to be a rapidly-acting apoptotic enzyme, while Granzyme A is slow acting. The CB9 monoclonal antibody recognizes human Granzyme A and has been shown to be useful for flow cytometry, immunoprecipitation, and immunohistochemistry (paraffin-embedded sections).

**Antigen References:**

1. Brune J, *et al.* 1986. *Nature* 322:268.
2. Fan Z, *et al.* 2003. *Nature Immunol.* 4:145.
3. Fan Z, *et al.* 2003. *Cell* 112:659.
4. Masson D, *et al.* 1987. *Cell* 49:679.

### Related Products: Product

Purified anti-human Perforin  
 Purified Mouse IgG1, κ Isotype Ctrl  
 APC Goat anti-mouse IgG (minimal x-reactivity)  
 Biotin Goat anti-mouse IgG (minimal x-reactivity)  
 FITC Goat anti-mouse IgG (minimal x-reactivity)  
 HRP Goat anti-mouse IgG (minimal x-reactivity)  
 PE Goat anti-mouse IgG (minimal x-reactivity)  
 Cell Staining Buffer  
 RBC Lysis Buffer (10X)

### Clone

dG9  
 MOPC-21  
 Poly4053  
 Poly4053  
 Poly4053  
 Poly4053  
 Poly4053

### Application

ICFC, IP, IF, IHC  
 FC, ICFC, ICC, IF, IHC, IP, WB  
 FC  
 FC, ELISA, IHC, IF, WB  
 FC  
 ELISA, IHC, WB  
 FC  
 FC, ICC, ICFC  
 FC, ICFC



For research use only. Not for diagnostic use. Not for resale. BioLegend will not be held responsible for patent infringement or other violations that may occur with the use of our products.



\*These products may be covered by one or more Limited Use Label Licenses (see the BioLegend Catalog or our website, [www.biolegend.com/ordering#license](http://www.biolegend.com/ordering#license)). BioLegend products may not be transferred to third parties, resold, modified for resale, or used to manufacture commercial products, reverse engineer functionally similar materials, or to provide a service to third parties without written approval of BioLegend. By use of these products you accept the terms and conditions of all applicable Limited Use Label Licenses. Unless otherwise indicated, these products are for research use only and are not intended for human or animal diagnostic, therapeutic or commercial use.