

PE anti-human IFN- γ

Catalog # / Size: 506506 / 25 tests
506507 / 100 tests

Clone: B27

Isotype: Mouse IgG1, κ

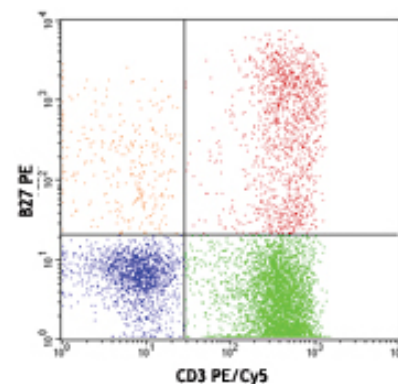
Immunogen: *E. coli*-expressed recombinant human IFN- γ

Reactivity: Human, **Cross-Reactivity:** Chimpanzee, Baboon, Cynomolgus, Rhesus, Pigtailed Macaque, African Green, Sooty Mangabey

Preparation: The antibody was purified by affinity chromatography, and conjugated with PE under optimal conditions. The solution is free of unconjugated PE and unconjugated antibody.

Formulation: Phosphate-buffered solution, pH 7.2, containing 0.09% sodium azide and 0.2% (w/v) BSA (origin USA).

Storage: The antibody solution should be stored undiluted at 4°C and protected from prolonged exposure to light. **Do not freeze.**



PMA+ionomycin-stimulated (6 hours) human peripheral blood lymphocytes were surface stained with CD3 PE/Cy5 and then intracellularly stained with B27 PE

Applications:

Applications: ICFC - Quality tested

Recommended Usage: Each lot of this antibody is quality control tested by intracellular immunofluorescent staining with flow cytometric analysis. **Test size products are transitioning from 20 μ l to 5 μ l per test.** Please check your vial or your CoA to find the suggested use of this reagent per million cells in 100 μ l staining volume or per 100 μ l of whole blood. It is recommended that the reagent be titrated for optimal performance for each application. Read more at www.biolegend.com/testsize regarding the test size change.

Application Notes: **Flow Cytometry²:** The fluorochrome-labeled B27 antibody is useful for intracellular immunofluorescent staining and flow cytometric analysis to identify IFN- γ -producing cells within mixed cell populations. For intracellular cytokine staining protocol, please visit www.biolegend.com and click on the support section. **Neutralization^{1,3}:** The LEAF™ purified antibody (Endotoxin <0.1 EU/ μ g, Azide-Free, 0.2 μ m filtered) is recommended for neutralization of human IFN- γ bioactivity (Cat. No. 506513). **Additional reported applications (for the relevant formats) include:** immunoprecipitation¹, Western Blotting¹, immunohistochemical staining⁴ of paraformaldehyde-fixed, saponin-treated frozen tissue sections, and immunocytochemistry. **Note:** For testing human IFN- γ in serum or plasma, BioLegend's ELISA Max™ Sets (Cat. No. 430101 to 430106) are specially developed and recommended.

Application References:

1. Favre C, *et al.* 1989. *Molec. Immunol.* 26:17.
2. Kaur A, *et al.* 2002. *J Virol.* 76:3646.
3. Abrams J, *et al.* 1992. *Immunol. Rev.* 127:5.
4. Andersson U, *et al.* 1999. *Detection and quantification of gene expression.* New York:Springer-Verlag.
5. Rout N, *et al.* 2010. *PLoS One* 5:e9787. (FC)

Description: Interferon- γ is a potent multifunctional cytokine which is secreted primarily by activated NK cells and T cells. Originally characterized based on anti-viral activities, IFN- γ also exerts anti-proliferative, immunoregulatory, and proinflammatory activities. IFN- γ can upregulate MHC class I and II antigen expression by antigen-presenting cells. The B27 antibody reacts with the human interferon- γ . The B27 antibody can neutralize the bioactivity of natural or recombinant IFN- γ .

Antigen References:

1. Fitzgerald K, *et al.* Eds. 2001. *The Cytokine FactsBook.* Academic Press San Diego.
2. De Maeyer E, *et al.* 1992. *Curr. Opin. Immunol.* 4:321.
3. Farrar M, *et al.* 1993. *Annu. Rev. Immunol.* 11:571.
4. Gray P, *et al.* 1987. *Lymphokines* 13:151.

Related Products:	Product	Clone	Application
	PE Mouse IgG1, κ Isotype Ctrl	MOPC-21	FC, ICFC
	Cell Staining Buffer		FC, ICC, ICFC
	Fixation Buffer		ICC, ICFC
	Permeabilization Wash Buffer (10X)		ICC, ICFC, IHC
	RBC Lysis Buffer (10X)		FC, ICFC
	Brefeldin A Solution (1,000X)		ICFC
	Monensin Solution (1,000X)		ICFC
	PE Mouse IgG1, κ Isotype Ctrl (ICFC)	MOPC-21	ICFC



For research use only. Not for diagnostic use. Not for resale. BioLegend will not be held responsible for patent infringement or other violations that may occur with the use of our products.



*These products may be covered by one or more Limited Use Label Licenses (see the BioLegend Catalog or our website, www.biolegend.com/ordering#license). BioLegend products may not be transferred to third parties, resold, modified for resale, or used to manufacture commercial products, reverse engineer functionally similar materials, or to provide a service to third parties without written approval of BioLegend. By use of these products you accept the terms and conditions of all applicable Limited Use Label Licenses. Unless otherwise indicated, these products are for research use only and are not intended for human or animal diagnostic, therapeutic or commercial use.