

## Biotin anti-mouse MCP-1

**Catalog # / Size:** 506001 / 50 µg  
506002 / 500 µg

**Clone:** 4E2/MCP

**Isotype:** Armenian Hamster IgG

**Immunogen:** CHO-expressed, recombinant mouse MCP-1

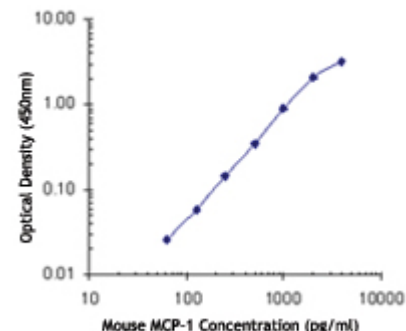
**Reactivity:** Mouse

**Preparation:** The antibody was purified by affinity chromatography, and conjugated with biotin under optimal conditions. The solution is free of unconjugated biotin.

**Formulation:** Phosphate-buffered solution, pH 7.2, containing 0.09% sodium azide.

**Concentration:** 0.5 mg/ml

**Storage:** The antibody solution should be stored undiluted at 4°C. **Do not freeze.**



## Applications:

**Applications:** ELISA Detection, ELISPOT Detection

**Recommended Usage:** Each lot of this antibody is quality control tested by ELISA assay. For use as an ELISA detection antibody, a concentration range of 1-4 µg/ml is recommended. To obtain a linear standard curve, serial dilutions of MCP-1 recombinant protein ranging from 2000 to 15 pg/ml are recommended for each ELISA plate. It is recommended that the reagent be titrated for optimal performance for each application.

**Application Notes:** **ELISA or ELISPOT Detection<sup>1,2</sup>:** The biotinylated 4E2/MCP antibody is useful as a detection antibody for a sandwich ELISA or ELISPOT assay, when used in conjunction with purified 2H5 antibody (Cat. No. 505902/505906) as the capture antibody for the detection of mouse MCP-1.

**Additional reported applications (for the relevant formats) include:** Western blotting<sup>1</sup>. The 4E2/MCP is a non-neutralizing antibody<sup>1</sup>.

**Application References:**

1. Luo, Y., *et al.* 1994. *J. Immunol.* 153:3708.
2. Luo, Y., *et al.* 1999 *J. Immunol.* 163:3985.
3. Yang D, *et al.* 2013. *Cereb Cortex.* 23:1218. PubMed.

**Description:** Monocyte chemotactic protein-1 (MCP-1) also known as monocyte chemotactic and activating factor (MCAF) was identified based on its ability to chemoattract monocytes. Subsequently, MCP-1 has also been found to regulate adhesion molecule expression and cytokine production in monocytes. MCP-1 is identical to the product of the JE gene, a PDGF inducible gene. MCP-1 is a member of the beta (C-C) chemokine subfamily, known as CCL2. The 4E2/MCP antibody reacts with mouse MCP-1. This antibody does not react with human MCP-1 and related mouse beta chemokines, TCA3 and MIP-1beta. The 4E2/MCP antibody can not neutralize the bioactivity of natural or recombinant MCP-1.

**Antigen References:**

1. Fitzgerald, K., *et al.* Eds. 2001. *The Cytokine FactsBook.* Academic Press, San Diego.
2. Bischoff, S., *et al.* 1992. *J. Exp. Med.* 175:1271.
3. Charo, I., *et al.* 1994. *P. Natl. Acad. Sci. USA* 91:2752.
4. Jiang, Y., *et al.* 1992. *J. Immunol.* 148:2423.

### Related Products:

**Product**  
Purified anti-mouse/rat/human MCP-1  
Recombinant Mouse MCP-1  
HRP Avidin  
TMB Substrate Reagent Set  
ELISA Assay Diluent (5X)

### Clone

2H5  
Avidin

### Application

ELISA Capture, IHC, WB  
BA, ELISA  
ELISA, ELISPOT, IHC, WB  
ELISA  
ELISA



For research use only. Not for diagnostic use. Not for resale. BioLegend will not be held responsible for patent infringement or other violations that may occur with the use of our products.



\*These products may be covered by one or more Limited Use Label Licenses (see the BioLegend Catalog or our website, [www.biolegend.com/ordering#license](http://www.biolegend.com/ordering#license)). BioLegend products may not be transferred to third parties, resold, modified for resale, or used to manufacture commercial products, reverse engineer functionally similar materials, or to provide a service to third parties without written approval of BioLegend. By use of these products you accept the terms and conditions of all applicable Limited Use Label Licenses. Unless otherwise indicated, these products are for research use only and are not intended for human or animal diagnostic, therapeutic or commercial use.