

# Product Data Sheet

## Purified anti-mouse/rat/human MCP-1

**Catalog # / Size:** 505901 / 50 µg  
505902 / 500 µg

**Clone:** 2H5

**Isotype:** Armenian Hamster IgG

**Immunogen:** CHO-expressed, recombinant mouse MCP-1

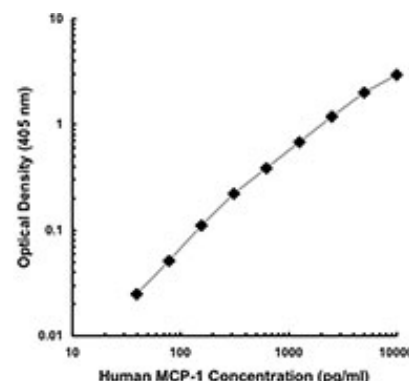
**Reactivity:** Mouse, Rat, Human, **Cross-Reactivity:** Rhesus

**Preparation:** The antibody was purified by affinity chromatography.

**Formulation:** Phosphate-buffered solution, pH 7.2, containing 0.09% sodium azide.

**Concentration:** 0.5 mg/ml

**Storage:** The antibody solution should be stored undiluted at 4°C.



## Applications:

**Applications:** ELISA Capture - *Quality tested*  
WB, IHC - *Reported in the literature*

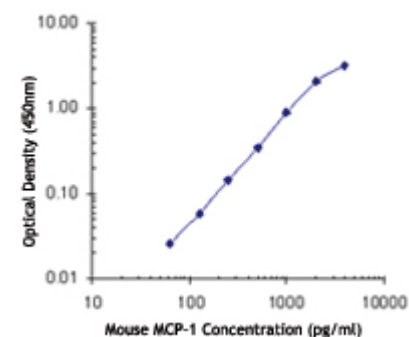
**Recommended Usage:** Each lot of this antibody is quality control tested by ELISA analysis. For ELISA capture applications, a concentration range of 5-10 µg/ml is recommended. To obtain a linear standard curve, serial dilutions of MCP-1 recombinant protein ranging from 2000 to 15 pg/ml are recommended for each ELISA plate.

**Application Notes:** **ELISA or ELISPOT Capture<sup>1</sup>:** The purified 2H5 antibody is useful as the capture antibody in a sandwich ELISA or ELISPOT assay, when used in conjunction with the biotinylated 4E2/MCP antibody (Cat. No. 506002) as the detecting antibody for the detection of mouse MCP-1. The purified 2H5 antibody is useful as the capture antibody in a sandwich ELISA or ELISPOT assay, when used in conjunction with the biotinylated 5D3-F7 antibody (Cat. No. 502609) as the detecting antibody for the detection of human MCP-1. The LEAF™ purified antibody is suggested for ELISPOT capture.

**Flow Cytometry<sup>2</sup>:** The fluorochrome-labeled 2H5 antibody is useful for intracellular immunofluorescent staining and flow cytometric analysis to identify MCP-1 -producing cells within mixed cell populations. For intracellular cytokine staining protocol, please visit [www.biolegend.com](http://www.biolegend.com) and click on the support section.

**Neutralization<sup>1,4,6</sup>:** The LEAF™ purified antibody (Endotoxin in vivo and *in vitro* (Cat. No. 505906).

**Additional reported applications (for the relevant formats) include:** Western blotting<sup>3</sup> and immunohistochemistry of paraformaldehyde-fixed, saponin-treated frozen tissue sections<sup>5</sup>.



**Application References:**

1. Luo Y, *et al.* 1994. *J. Immunol.* 153:3708.
2. Zhang Y, *et al.* 2002. *J. Immunol.* 168:3088.
3. Luo Y, *et al.* 1999. *J. Immunol.* 163:3985.
4. Morrison BE, *et al.* 2003. *J. Clin. Invest.* 112:1862.
5. Hancock WW, *et al.* 1997. *Transplantation* 64:696.
6. Yu R, *et al.* 2006. *Obesity* 14:1353.

**Description:** Monocyte chemoattractant protein-1 (MCP-1) also known as monocyte chemoattractant and activating factor (MCAF) was identified based on its ability to chemoattract monocytes. Subsequently, MCP-1 has also been found to regulate adhesion molecule expression and cytokine production in monocytes. MCP-1 is identical to the product of the JE gene, a PDGF inducible gene. MCP-1 is a member of the beta (C-C) chemokine subfamily, known as CCL2. The 2H5 antibody reacts with mouse, rat, and human MCP-1. The 2H5 antibody can neutralize the bioactivity of natural or recombinant MCP-1.

**Antigen References:**

1. Fitzgerald K, *et al.* Eds. 2001. *The Cytokine FactsBook*. Academic Press, San Diego.
2. Bischoff S, *et al.* 1992. *J. Exp. Med.* 175:1271.
3. Charo I, *et al.* 1994. *P. Natl. Acad. Sci. USA* 91:2752.
4. Jiang Y, *et al.* 1992. *J. Immunol.* 148:2423.

**Related Products:** **Product**  
Biotin anti-mouse MCP-1

**Clone**  
4E2/MCP

**Application**  
ELISA Detection, ELISPOT  
Detection



For research use only. Not for diagnostic use. Not for resale. BioLegend will not be held responsible for patent infringement or other violations that may occur with the use of our products.



\*These products may be covered by one or more Limited Use Label Licenses (see the BioLegend Catalog or our website, [www.biolegend.com/ordering#license](http://www.biolegend.com/ordering#license)). BioLegend products may not be transferred to third parties, resold, modified for resale, or used to manufacture commercial products, reverse engineer functionally similar materials, or to provide a service to third parties without written approval of BioLegend. By use of these products you accept the terms and conditions of all applicable Limited Use Label Licenses. Unless otherwise indicated, these products are for research use only and are not intended for human or animal diagnostic, therapeutic or commercial use.

Recombinant Mouse MCP-1  
HRP Avidin  
TMB Substrate Reagent Set  
ELISA Assay Diluent (5X)

Avidin

BA, ELISA  
ELISA, ELISPOT, IHC, WB  
ELISA  
ELISA



For research use only. Not for diagnostic use. Not for resale. BioLegend will not be held responsible  
for patent infringement or other violations that may occur with the use of our products.



\*These products may be covered by one or more Limited Use Label Licenses (see the BioLegend Catalog or our website, [www.biolegend.com/ordering#license](http://www.biolegend.com/ordering#license)). BioLegend products may not be transferred to third parties, resold, modified for resale, or used to manufacture commercial products, reverse engineer functionally similar materials, or to provide a service to third parties without written approval of BioLegend. By use of these products you accept the terms and conditions of all applicable Limited Use Label Licenses. Unless otherwise indicated, these products are for research use only and are not intended for human or animal diagnostic, therapeutic or commercial use.

BioLegend Inc., 9727 Pacific Heights Blvd, San Diego, CA 92121 [www.biolegend.com](http://www.biolegend.com)  
Toll-Free Phone: 1-877-Bio-Legend (246-5343) Phone: (858) 768-5800 Fax: (877) 455-9587