

Pacific Blue™ anti-human IL-1β

Catalog # / Size: 511709 / 25 µg
511710 / 100 µg

Clone: H1b-98

Isotype: Mouse IgG1, κ

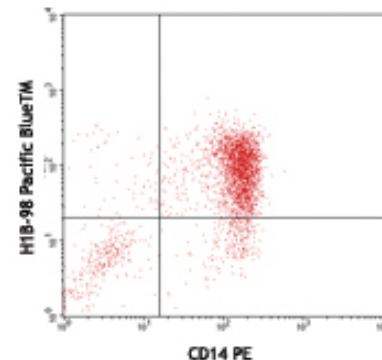
Reactivity: Human

Preparation: The antibody was purified by affinity chromatography, and conjugated with Pacific Blue™ under optimal conditions. The solution is free of unconjugated Pacific Blue™.

Formulation: Phosphate-buffered solution, pH 7.2, containing 0.09% sodium azide.

Concentration: 0.5 mg/ml

Storage: The antibody solution should be stored undiluted at 4°C and protected from prolonged exposure to light. **Do not freeze.**



LPS-stimulated (6 hours) human peripheral blood monocytes stained with CD14 PE and intracellular stained with H1b-98 Pacific Blue™

Applications:

Applications: ICFC - *Quality tested*

Recommended Usage: Each lot of this antibody is quality control tested by intracellular immunofluorescent staining with flow cytometric analysis. For immunofluorescent staining, the suggested use of this reagent is ≤2.0 µg per 10⁶ cells in 100 µl volume. It is highly recommended that the reagent be titrated for optimal performance for each application.

* Pacific Blue™ has a maximum emission of 455 nm when it is excited at 405 nm. Prior to using Pacific Blue™ conjugate for flow cytometric analysis, please verify your flow cytometer's capability of exciting and detecting the fluorochrome.

** Pacific Blue™ is a registered trademark of Molecular Probes, Inc. Pacific Blue™ dye antibody conjugates are sold under license from Molecular Probes, Inc. for research use only, except for use in combination with microarrays and high content screening, and are covered by pending and issued patents.

Description: IL-1 refers to two proteins, IL-1α and IL-1β which are the products of distinct genes, but which are recognized by the same cell surface receptors. IL-1β is a potent immuno-modulator which mediates a wide range of immune and inflammatory responses including the activation of B and T cells.

Antigen References:

1. Fitzgerald K, et al. Eds. 2001. *The Cytokine FactsBook*. Academic Press San Diego.
2. Bomford R, et al. Eds. 1989. *Interleukin-1 inflammation and disease*. Elsevier New York.
3. Brazel D, et al. 1991. *Biotechnol. Ther.* 2:241.
4. Dinarello C. 1996. *Blood* 87:2095.

Related Products: **Product**

Pacific Blue™ Mouse IgG1, κ Isotype Ctrl
Cell Staining Buffer
RBC Lysis Buffer (10X)

Clone
MOPC-21

Application
FC, ICFC
FC, ICC, ICFC
FC, ICFC



For research use only. Not for diagnostic use. Not for resale. BioLegend will not be held responsible for patent infringement or other violations that may occur with the use of our products.



*These products may be covered by one or more Limited Use Label Licenses (see the BioLegend Catalog or our website, www.biolegend.com/ordering#license). BioLegend products may not be transferred to third parties, resold, modified for resale, or used to manufacture commercial products, reverse engineer functionally similar materials, or to provide a service to third parties without written approval of BioLegend. By use of these products you accept the terms and conditions of all applicable Limited Use Label Licenses. Unless otherwise indicated, these products are for research use only and are not intended for human or animal diagnostic, therapeutic or commercial use.