

## PE anti-human IL-8

**Catalog # / Size:** 511408 / 100 tests

**Clone:** E8N1

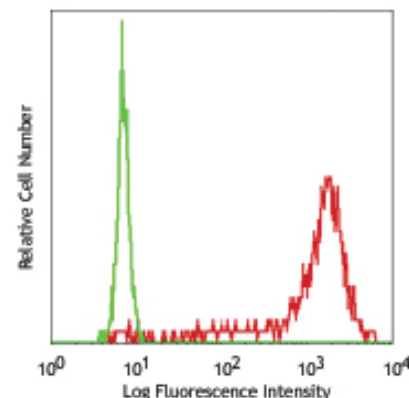
**Isotype:** Mouse IgG1,  $\kappa$

**Reactivity:** Human

**Preparation:** The antibody was purified by affinity chromatography, and conjugated with PE under optimal conditions. The solution is free of unconjugated PE and unconjugated antibody.

**Formulation:** Phosphate-buffered solution, pH 7.2, containing 0.09% sodium azide, 0.2% (w/v) BSA (USA origin).

**Storage:** The antibody solution should be stored undiluted at 4°C and protected from prolonged exposure to light. **Do not freeze.**



*LPS-stimulated (6 hours, in the presence of monensin) human peripheral blood monocytes intracellularly stained with E8N1 PE*

## Applications:

**Applications:** ICFC - *Quality tested*

**Recommended Usage:** Each lot of this antibody is quality control tested by intracellular immunofluorescent staining with flow cytometric analysis. **Test size products are transitioning from 20  $\mu$ l to 5  $\mu$ l per test.** Please check your vial or your CoA to find the suggested use of this reagent per million cells in 100  $\mu$ l staining volume or per 100  $\mu$ l of whole blood. It is recommended that the reagent be titrated for optimal performance for each application. Read more at [www.biolegend.com/testsize](http://www.biolegend.com/testsize) regarding the test size change.

**Application Notes:** **ELISA Detection:** The biotinylated E8N1 antibody is useful as the detection antibody in a sandwich ELISA assay, when used in conjunction with the purified H8A5 (Cat. No. 511502) antibody as the capture antibody. **Flow Cytometry:** The fluorochrome-labeled E8N1 antibody is useful for intracellular immunofluorescent staining and flow cytometric analysis to identify IL-8-producing cells within mixed cell populations. For intracellular cytokine staining protocol, please visit [www.biolegend.com](http://www.biolegend.com) and click on the support section. **Note:** For testing human IL-8 in serum or plasma, BioLegend's ELISA Max™ Sets are specially developed and recommended.

**Application References:** 1. Kenzel S, *et al.* 2012. *J. Immunol.* 189:4582. PubMed.

**Description:** IL-8, also known as neutrophil chemotactic factor, neutrophil activating protein, and monocyte-derived neutrophil chemotactic factor, is a member of the alpha (C-X-C) subfamily of chemokines called CXCL8. In response to proinflammatory stimuli, IL-8 is produced by monocytes, macrophages, T cells, neutrophils, and fibroblasts. IL-8 promotes neutrophil chemotaxis and degranulation. The 72 amino acid IL-8 is the predominant form secreted by monocytes and lymphocytes. The E8N1 antibody recognizes the human IL-8 protein and has been shown to be useful for intracellular immunofluorescence flow cytometric analysis and as ELISA detection antibody.

**Antigen References:** 1. Fitzgerald K, *et al.* Eds. 2001. *The Cytokine FactsBook*. Academic Press San Diego.  
2. Baggiolini M, *et al.* 1994. *Adv. Immunol.* 55:97.  
3. Schröder J, *et al.* 1992. *Immunology Ser.* 57:387.  
4. Zwahlen R, *et al.* 1993. *Intl. Rev. Expt. Pathol.* 34:27.

Related Products:	Product	Clone	Application
	Cell Staining Buffer		FC, ICC, ICFC
	Fixation Buffer		ICC, ICFC
	Permeabilization Wash Buffer (10X)		ICC, ICFC, IHC
	PE Mouse IgG1, $\kappa$ Isotype Ctrl (ICFC)	MOPC-21	ICFC



For research use only. Not for diagnostic use. Not for resale. BioLegend will not be held responsible for patent infringement or other violations that may occur with the use of our products.



\*These products may be covered by one or more Limited Use Label Licenses (see the BioLegend Catalog or our website, [www.biolegend.com/ordering#license](http://www.biolegend.com/ordering#license)). BioLegend products may not be transferred to third parties, resold, modified for resale, or used to manufacture commercial products, reverse engineer functionally similar materials, or to provide a service to third parties without written approval of BioLegend. By use of these products you accept the terms and conditions of all applicable Limited Use Label Licenses. Unless otherwise indicated, these products are for research use only and are not intended for human or animal diagnostic, therapeutic or commercial use.