

Purified anti-human NGF

Catalog # / Size: 509601 / 50 µg
509602 / 500 µg

Clone: JKhNGF-1

Isotype: Mouse IgG1, κ

Immunogen: recombinant human NGF (a.a. 58-68)

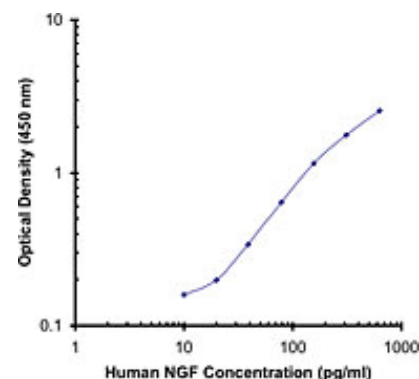
Reactivity: Human, **Cross-Reactivity*:** Cattle (Bovine, Cow), Viper

Preparation: The antibody was purified by affinity chromatography.

Formulation: Phosphate-buffered solution, pH 7.2, containing 0.09% sodium azide.

Concentration: 0.5 mg/ml

Storage: The antibody solution should be stored undiluted at 4°C.



Applications:

Applications: ELISA Capture - *Quality tested*

Recommended Usage: Each lot of this antibody is quality control tested by ELISA assay. For ELISA applications, a concentration range of 6 - 10 µg/ml is recommended. It is recommended that the reagent be titrated for optimal performance for each application. Additionally, BioLegend recommends the usage of Tris-Buffered Saline (TBS), pH = 7.2 for all washes and incubations, except substrate buffer. Do not use PBS as results may vary dramatically.

Application Notes: **ELISA Capture:** The purified JKhNGF-1 antibody is useful as the capture antibody in a sandwich ELISA assay, when used in conjunction with the biotinylated JKhNGF-2 antibody (Cat. No. 509802) as the detecting antibody for detecting human NGF.

Antigen References:

1. Fitzgerald K, *et al.* Eds. 2001. The Cytokine FactsBook. Academic Press San Diego.
2. Levi A, *et al.* 1991. *Annu. Rev. Pharmacol. Toxicol.* 31:205.
3. Varon S, *et al.* 1991. *Adv. Exp. Med. Biol.* 296:267.
4. Micera A, *et al.* 2003. *Cytokine Growth Factor Rev.* 14:369.

Related Products:

Product

HRP Avidin

TMB Substrate Reagent Set

ELISA Assay Diluent (5X)

Biotin anti-mouse/human NGF

Clone

Avidin

JKhNGF-2

Application

ELISA, ELISPOT, IHC, WB

ELISA

ELISA

ELISA Detection



For research use only. Not for diagnostic use. Not for resale. BioLegend will not be held responsible for patent infringement or other violations that may occur with the use of our products.



*These products may be covered by one or more Limited Use Label Licenses (see the BioLegend Catalog or our website, www.biolegend.com/ordering#license). BioLegend products may not be transferred to third parties, resold, modified for resale, or used to manufacture commercial products, reverse engineer functionally similar materials, or to provide a service to third parties without written approval of BioLegend. By use of these products you accept the terms and conditions of all applicable Limited Use Label Licenses. Unless otherwise indicated, these products are for research use only and are not intended for human or animal diagnostic, therapeutic or commercial use.