

Alexa Fluor® 647 anti-human RANTES (CCL5)

Catalog # / Size: 515505 / 25 tests
515506 / 100 tests

Clone: VL1

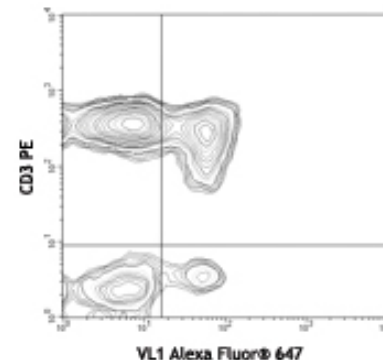
Isotype: Mouse IgG2b, κ

Reactivity: Human, **Cross-Reactivity:** Rhesus

Preparation: The antibody was purified by affinity chromatography, and conjugated with Alexa Fluor® 647 under optimal conditions. The solution is free of unconjugated Alexa Fluor® 647.

Formulation: Phosphate-buffered solution, pH 7.2, containing 0.09% sodium azide and 0.2% (w/v) BSA (origin USA).

Storage: The antibody solution should be stored undiluted at 4°C and protected from prolonged exposure to light. **Do not freeze.**



Human PBMCs cultured overnight with monensin, then surface stained with CD3 PE and intracellularly stained with VL1 Alexa Fluor® 647 (top panel), lower panel data shows the staining was specifically blocked by pre-incubation with purified VL1 antibody (gated on lymphocyte population)

Applications:

Applications: ICFC - Quality tested

Recommended Usage: Each lot of this antibody is quality control tested by intracellular immunofluorescent staining with flow cytometric analysis. For immunofluorescent staining, the suggested use of this reagent is 5 µl per million cells or 5 µl per 100 µl of whole blood. It is recommended that the reagent be titrated for optimal performance for each application.

* Alexa Fluor® 647 has a maximum emission of 668 nm when it is excited at 633nm / 635nm.

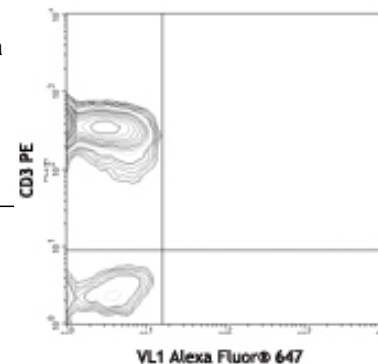
** Alexa Fluor® 647 is a registered trademark of Molecular Probes, Inc. Alexa Fluor® 647 dye antibody conjugates are sold under license from Molecular Probes, Inc. for research use only, except for use in combination with microarrays and high content screening, and are covered by pending and issued patents.

Application References: 1. Krensky AM. *et al.* 1997 *Methods Enzymol* 287:162

Description: RANTES (CCL5) is a member of the CC chemokine family. Its mature form consists of 68 amino acid residues. RANTES is a strong chemottractant for monocytes, NK cells, T cells and eosinophils. Rantes may have important role in mediating immune and inflammatory responses.

Antigen References: 1. Von Luetichau. *et al.* 1996. *Cytokine* 8:89
2. Schall TJ. *et al.* 1991. *Cytokine* 3:165

Related Products:	Product	Clone	Application
	Alexa Fluor® 647 Mouse IgG2b, κ	MPC-11	FC, ICFC
	Isotype Ctrl		
	Cell Staining Buffer		FC, ICC, ICFC
	RBC Lysis Buffer (10X)		FC, ICFC



For research use only. Not for diagnostic use. Not for resale. BioLegend will not be held responsible for patent infringement or other violations that may occur with the use of our products.



*These products may be covered by one or more Limited Use Label Licenses (see the BioLegend Catalog or our website, www.biolegend.com/ordering#license). BioLegend products may not be transferred to third parties, resold, modified for resale, or used to manufacture commercial products, reverse engineer functionally similar materials, or to provide a service to third parties without written approval of BioLegend. By use of these products you accept the terms and conditions of all applicable Limited Use Label Licenses. Unless otherwise indicated, these products are for research use only and are not intended for human or animal diagnostic, therapeutic or commercial use.