

Product Data Sheet

Purified anti-RANTES (CCL5)

Catalog # / Size: 515502 / 100 µg

Clone: VL1

Isotype: Mouse IgG2b, κ

Reactivity: Human, **Cross-Reactivity:** Rhesus

Preparation: The antibody was purified by affinity chromatography.

Formulation: Phosphate-buffered solution, pH 7.2, containing 0.09% sodium azide.

Concentration: 0.5 mg/ml

Storage: The antibody solution should be stored undiluted at 4°C.

Applications:

Applications: WB - *Quality tested*
IHC, ELISA - *Reported in the literature*

Recommended Usage: Each lot of this antibody is quality control tested by Western blotting. For Western blotting, the suggested use of this reagent is 0.25 to 1.0 µg per ml. It is recommended that the reagent be titrated for optimal performance for each application.

Application References: 1. Krensky AM. *et al.* 1997 *Methods Enzymol* 287:162

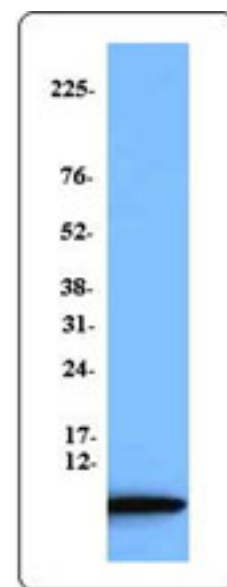
Description: RANTES (CCL5) is a member of the CC chemokine family. Its mature form consists of 68 amino acid residues. RANTES is a strong chemottractant for monocytes, NK cells, T cells and eosinophils. Rantes may have important role in mediating immune and inflammatory responses.

Antigen References: 1. Von Luetichau. *et al.* 1996. *Cytokine* 8:89
2. Schall TJ. *et al.* 1991. *Cytokine* 3:165

Related Products:
Product
Purified Mouse IgG2b, κ Isotype Ctrl
Cell Staining Buffer
RBC Lysis Buffer (10X)

Clone
MG2b-57

Application
FC, ICC, ICFC, IF, IHC, IP, WB
FC, ICC, ICFC
FC, ICFC



Western blot analysis of recombinant Human RANTES/CCL5 protein (Catalog Number 580202) using Purified Anti-human RANTES Antibody, clone VL1.



For research use only. Not for diagnostic use. Not for resale. BioLegend will not be held responsible for patent infringement or other violations that may occur with the use of our products.



*These products may be covered by one or more Limited Use Label Licenses (see the BioLegend Catalog or our website, www.biollegend.com/ordering#license). BioLegend products may not be transferred to third parties, resold, modified for resale, or used to manufacture commercial products, reverse engineer functionally similar materials, or to provide a service to third parties without written approval of BioLegend. By use of these products you accept the terms and conditions of all applicable Limited Use Label Licenses. Unless otherwise indicated, these products are for research use only and are not intended for human or animal diagnostic, therapeutic or commercial use.