

Purified anti-APC11

Catalog #/ 611601 / 50 μ l (5 Western blots)

Size: 611602 / 200 μ l (20 Western blots)

Clone: Poly6116

Isotype: Rabbit IgG

Immunogen: Recombinant (partial), N-terminal

Reactivity: Mouse, Human

Preparation: The antibody was purified by antigen-affinity chromatography.

Formulation: This antibody is provided in phosphate-buffered solution, pH 7.2, containing 0.09% sodium azide and 50% glycerol.

Storage: Upon receipt, store frozen at -20° C.

Applications

Applications: WB, IF

Recommended Each lot of this antibody is quality control tested by Western blotting. Western blotting,

Usage: suggested working dilution(s): Use 10 μ l per 5 ml antibody dilution buffer for each mini-gel. For immunofluorescence microscopy: Use a starting dilution of 1:100. It is recommended that the reagent be titrated for optimal performance for each application.

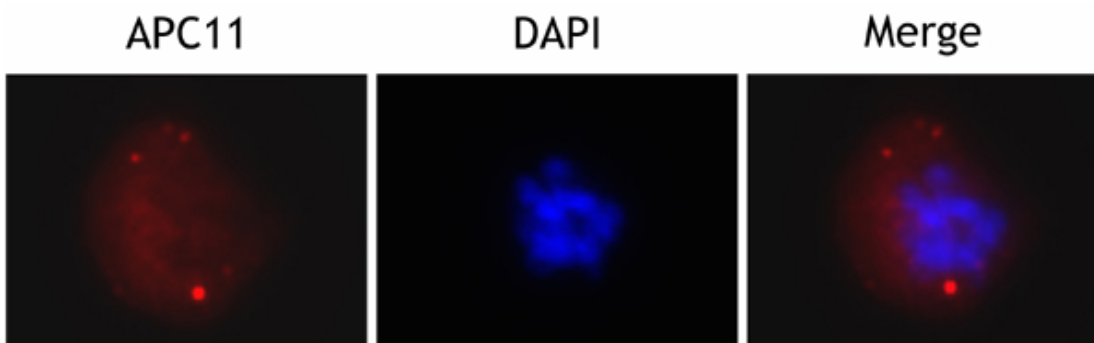


Figure 1. Overnight nocodazole treated HeLa cells stained with purified rabbit polyclonal antibody against APC11 followed by Rhodamine Red-X conjugated goat anti-rabbit IgG and DAPI.

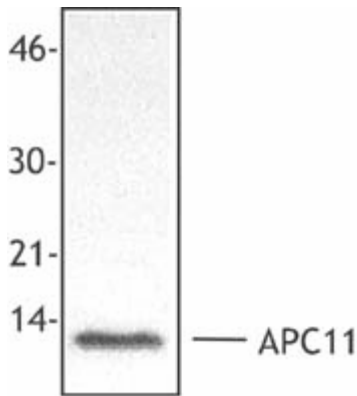


Figure 2. MCF-7 cell extract was resolved by electrophoresis, transferred to nitrocellulose, and probed with rabbit anti-APC11 antibody. Proteins were visualized using a donkey anti-rabbit secondary conjugated to HRP and a chemiluminescence detection system.

Antigen Information

Other Names: Anaphase-promoting complex subunit 11

Structure: E3 enzyme family, RING-H2 domain; 9.8 kD

Distribution: Distributed diffusely in cytoplasm, nucleus with discrete accumulation in granular structures

Function: Probable catalytic subunit, multisubunit cell cycle ubiquitin ligase. Regulates sister chromatid separation by degrading securins. Involved in ubiquitin-dependent cyclin catabolism, metaphase/anaphase transition, spindle elongation

Interaction: Ubc4, anaphase promoting complex composed of eight protein subunits APC1-8, APC9-11, Cdc26, Mnd2, and Swm1

Description: APC11 (anaphase-promoting complex subunit 11) is a member of the E3 enzyme family. This protein contains a RING-H2 domain and has a molecular weight of approximately 9.8 kD. The APC11 protein is distributed diffusely in the cytoplasm and is located in the nucleus with discrete accumulation in granular structures. The APC11 protein is a probable catalytic unit in the APC complex. The APC11 protein functions with other members of the APC complex as a multisubunit cell cycle ubiquitin ligase, and a regulator of sister chromatid separation by degrading securins. In addition, this protein functions in ubiquitin-dependent cyclin catabolism, metaphase/anaphase transition, and spindle elongation. The APC11 protein comprises one subunit of the anaphase promoting complex including APC1-8, and other probable complex proteins APC9-11, Cdc26, Mnd2, Swm1. The APC complex is inactivated by protein kinase A and is activated by CDC20 and Cdh1. In addition to the APC complex proteins, APC11 has been shown to interact with Ubc4. The Poly6116 antibody has been shown to be useful for Western blotting of the human and mouse APC11 protein.

Antigen References:

1. Zachariae, W., *et al.*, 1999. *Genes Dev.* 13:2039.
2. Tang, Z., *et al.*, 2001. *Mol. Biol. Cell* 12:3839.
3. Chan, A., *et al.*, 2001. *J. Cell Biochem.* 83:249.
4. Vodermaier, H., *et al.*, 2003. *Curr. Biol.* 13:1459.