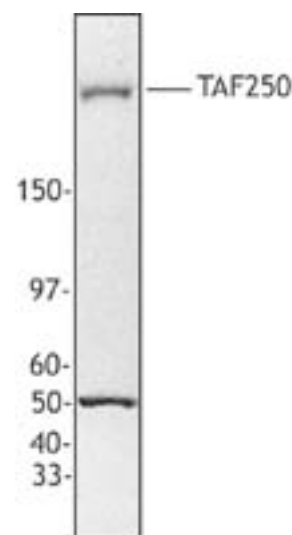


Product Data Sheet

Purified anti-TAF250

Catalog # / Size: 610502 / 200 µl (20 Western blots)
Clone: Poly6105
Isotype: Rabbit IgG
Immunogen: Peptide
Reactivity: Human, Recognizes both isoforms, peptide spans casein kinase II phosphorylation site
Preparation: The antibody was purified by antigen-affinity chromatography.
Formulation: This antibody is provided in phosphate-buffered solution, pH 7.2, containing 0.09% sodium azide and 50% glycerol.
Storage: Upon receipt, store frozen at -20° C.



Applications:

Applications: WB - Quality tested

Recommended Usage: Each lot of this antibody is quality control tested by Western blotting. Western blotting, suggested working dilution(s): Use 10 µl per 5 ml antibody dilution buffer for each mini-gel. It is recommended that the reagent be titrated for optimal performance for each application.

Description: TAF250 (also known as TAF1 RNA polymerase II, TATA box binding protein associated factor 250 kD, UBF initiation factor TFIID 250 kD subunit) is a 210-250 kD member of the bipartite protein kinase family containing protein kinase domains. There are two reported isoforms of this ubiquitously expressed nuclear protein. Highest expression of TAF250 has been observed in thymus, glioblastoma, and normal endometrium at mid-secretory phase. TAF250 functions as acetyltransferase and ubiquitin activating/conjugating enzyme. This protein is thought to play an essential role in TFIID assembly by interacting with TBP and other TAFs, linking cell cycle and transcriptional control. TAF250 is essential for the progression of G1 phase of the cell cycle and has been shown to stimulate ribosomal DNA transcription by binding to the activator UBF. TAF250 is modified by phosphorylation (casein kinase II). TAF250 is the largest subunit of TFIID and has been shown to interact with TBP and other TAF proteins, and UBF. The Poly6105 antibody recognizes both isoforms of human TAF250 and has been shown to be useful for Western blotting.

MCF7 nuclear extract was resolved by electrophoresis, transferred to nitrocellulose, and probed with rabbit anti-TAF250 antibody. Proteins were visualized using a donkey anti-rabbit secondary conjugated to HRP and a chemiluminescence detection system. In addition to the TAF250 specific band, this polyclonal antibody detects an unknown protein with a molecular weight of approximately 50 kD.

Antigen References: 1. Ruppert S, *et al.* 1993. *Nature* 362:175.
 2. Sekiguchi T, *et al.* 1991. *Mol. Cell. Biol.* 11:3317.
 3. Martel L, *et al.* 2002. *Mol. Cell. Biol.* 22:2142.

Related Products:

Product
 Purified anti-TAF250
 HRP Donkey anti-rabbit IgG (minimal x-reactivity)

Clone
 Poly6104
 Poly4064

Application
 WB
 ELISA, IHC, WB



For research use only. Not for diagnostic use. Not for resale. BioLegend will not be held responsible for patent infringement or other violations that may occur with the use of our products.



*These products may be covered by one or more Limited Use Label Licenses (see the BioLegend Catalog or our website, www.biollegend.com/ordering#license). BioLegend products may not be transferred to third parties, resold, modified for resale, or used to manufacture commercial products, reverse engineer functionally similar materials, or to provide a service to third parties without written approval of BioLegend. By use of these products you accept the terms and conditions of all applicable Limited Use Label Licenses. Unless otherwise indicated, these products are for research use only and are not intended for human or animal diagnostic, therapeutic or commercial use.