

## Purified anti-SSRP1

**Catalog # / Size:** 609802 / 100 µg

**Clone:** 3E4

**Isotype:** Mouse IgG1, κ

**Immunogen:** Recombinant (partial)

**Reactivity:** Human

**Preparation:** The antibody was purified by affinity chromatography.

**Formulation:** This antibody is provided in phosphate-buffered solution, pH 7.2, containing 0.09% sodium azide at 0.5 mg/ml.

**Concentration:** 0.5 mg/ml

**Storage:** Upon receipt, store undiluted at 4°C.

## Applications:

**Applications:** WB-*Quality tested*  
IP, IF - *Reported in the literature*

**Recommended Usage:** Each lot of this antibody is quality control tested by Western blotting. Western blotting, suggested working dilution(s): Use 5 µg per 5 ml antibody dilution buffer for each mini-gel. It is recommended that the reagent be titrated for optimal performance for each application.

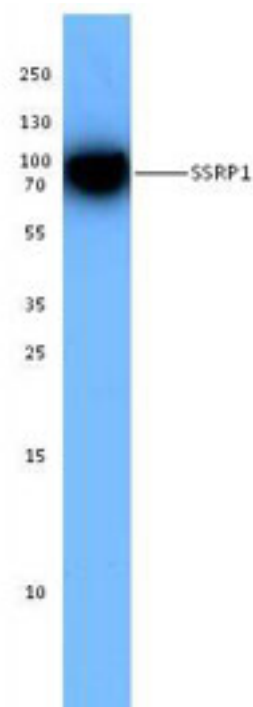
**Application References:** 1. Tan B C-M, *et al.* 2006. *EMBO* doi:10.1038/sj.emboj.7601271

**Description:** SSRP1 is a nuclear protein and a component of the FACT complex (facilitates chromatin transcription). The FACT140 complex is composed of the Spt16 and the SSRP1 proteins. This complex interacts with nucleosomes and histone H2A/H2B dimers to promote nucleosome disassembly and allow transcription elongation. This protein interacts with dsDNA. The SSRP1 protein has been shown to be modified by cisplatin and may protect DNA from repair and block DNA replication. The 3E4 monoclonal antibody recognizes human SSRP1 and has been shown to be useful for Western blotting.

**Antigen References:** 1. LeRoy G, *et al.* 1998. *Science* 282:1836.  
2. Orphanides G, *et al.* 1998. *Cell* 92:105.  
3. Orphanides G, *et al.* 1999. *Nature* 400:284.

### Related Products:

<b>Product</b>	<b>Clone</b>	<b>Application</b>
HRP Goat anti-mouse IgG (minimal x-reactivity)	Poly4053	ELISA, IHC, WB
Purified anti-SSRP1	10D1	WB, ChIP, IP, IF
Purified anti-Spt16 (FACT140 complex)	8D2	WB, IP, IF



293E cell extracts were resolved by electrophoresis, transferred to nitrocellulose, and probed with purified anti-SSRP1 Antibody (clone 3E4). Proteins were visualized using a goat anti-mouse-IgG secondary conjugated to HRP and chemiluminescence detection.



For research use only. Not for diagnostic use. Not for resale. BioLegend will not be held responsible for patent infringement or other violations that may occur with the use of our products.



\*These products may be covered by one or more Limited Use Label Licenses (see the BioLegend Catalog or our website, [www.biolegend.com/ordering#license](http://www.biolegend.com/ordering#license)). BioLegend products may not be transferred to third parties, resold, modified for resale, or used to manufacture commercial products, reverse engineer functionally similar materials, or to provide a service to third parties without written approval of BioLegend. By use of these products you accept the terms and conditions of all applicable Limited Use Label Licenses. Unless otherwise indicated, these products are for research use only and are not intended for human or animal diagnostic, therapeutic or commercial use.