

Purified anti-GCN5

Catalog # / Size: 607201 / 50 µl (5 Western blots)
 607202 / 200 µl (20 Western blots)

Clone: Poly6072

Isotype: Rabbit IgG

Immunogen: Peptide

Reactivity: Human

Preparation: The antibody was purified by antigen-affinity chromatography.

Formulation: This antibody is provided in phosphate-buffered solution, pH 7.2, containing 0.09% sodium azide and 50% glycerol.

Storage: Upon receipt, store frozen at -20° C.

Applications:

Applications: WB, IF

Recommended Usage: Each lot of this antibody is quality control tested by Western blotting. Western blotting, suggested working dilution(s): Use 10 µl per 5 ml antibody dilution buffer for each mini-gel. For immunofluorescence microscopy: Use a dilution range of 1:100–1:400. It is recommended that the reagent be titrated for optimal performance for each application.

Application Notes: The Poly6072 antibody has been shown to be useful for Western blotting of human GCN5.

Application References: 1. Philp, A., *et al.* 2011. *J. Biol. Chem.* 286:30561. PubMed.
 2. McCullough SD, *et al.* 2012. *PNAS.* 109:21319. PubMed.

Description: GCN5 (general control of amino-acid synthesis 5) is a 94 kD member of the N-acetyltransferase superfamily. This nuclear protein is highly expressed in the liver where it functions as a transcriptional co-activator, transferring acetyl group from acetyl-CoA to epsilon amino acid of lysine 14 in core histone H3 to control chromatin remodeling during transcriptional activation. GCN5 is a component of the human STAGA transactivator complex (SPT3, TAF, and GCN5) and can be modified by phosphorylation (which inhibits activity). In addition to the STAGA complex proteins, GCN5 has been shown to interact with E1A and Myc.

Antigen References: 1. Poux A, *et al.* 2002. *P. Natl. Acad. Sci. USA* 99:14065.
 2. Candau R, *et al.* 1996. *Mol. Cell. Biol.* 16:593.
 3. Liu X, *et al.* 2003. *J. Biol. Chem.* 278:20405.

Related Products:

Product
 Purified anti-GCN5

HRP Donkey anti-rabbit IgG (minimal x-reactivity)

Clone

Poly6073

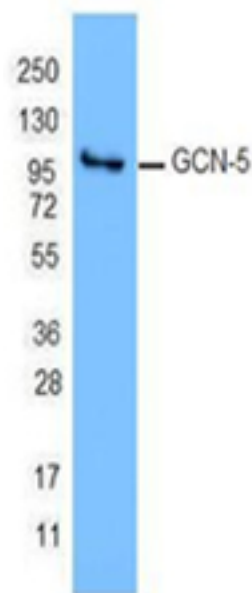
Poly4064

Application

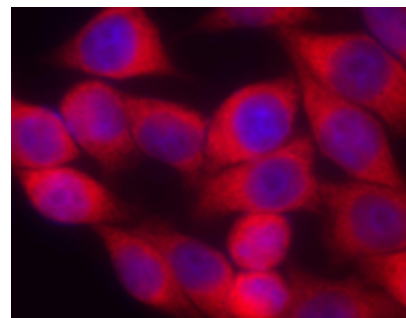
WB, IHC

ELISA, IHC,

WB



MCF-7 nuclear extract was resolved by electrophoresis, transferred to nitrocellulose and probed with rabbit anti-GCN5 antibody. Proteins were visualized using a donkey anti-rabbit secondary conjugated to HRP and chemiluminescence detection system.



HeLa cells stained with purified rabbit polyclonal antibody against GCN5 (poly6072), followed by Rhodamine Red-X conjugated goat anti-rabbit IgG and DAPI



For research use only. Not for diagnostic use. Not for resale. BioLegend will not be held responsible for patent infringement or other violations that may occur with the use of our products.



*These products may be covered by one or more Limited Use Label Licenses (see the BioLegend Catalog or our website, www.biolegend.com/ordering#license). BioLegend products may not be transferred to third parties, resold, modified for resale, or used to manufacture commercial products, reverse engineer functionally similar materials, or to provide a service to third parties without written approval of BioLegend. By use of these products you accept the terms and conditions of all applicable Limited Use Label Licenses. Unless otherwise indicated, these products are for research use only and are not intended for human or animal diagnostic, therapeutic or commercial use.