

Purified anti-eIF2 α

Catalog # / Size: 606701 / 50 μ l (5 Western blots)
606702 / 200 μ l (20 Western blots)

Clone: Poly6067

Isotype: Rabbit IgG

Immunogen: Recombinant (partial), C-terminal

Reactivity: Mouse, Human

Preparation: The antibody was purified by antigen-affinity chromatography.

Formulation: This antibody is provided in phosphate-buffered solution, pH 7.2, containing 0.09% sodium azide and 50% glycerol.

Storage: Upon receipt, store frozen at -20° C.

Applications:

Applications: WB

Recommended Usage: Each lot of this antibody is quality control tested by Western blotting. Western blotting, suggested working dilution(s): Use 10 μ l per 5 ml antibody dilution buffer for each mini-gel. It is recommended that the reagent be titrated for optimal performance for each application.

Application Notes: 1. Lu, Q., *et al.* 2010. *Am J. Physiol Cell Mol Physiol.* 298:501. PubMed.
2. Zang Y, *et al.* 2012. *Clin Cancer Res.* 18:5639. PubMed.

Description: eIF2 α (also known as eukaryotic translation initiation factor 2, subunit 1 alpha) is a 35 kD member of the eukaryotic translation initiation factor 2 family. This cytoplasmic protein is ubiquitously expressed and can downregulate protein synthesis when phosphorylated by PKR kinase under stress conditions (hypoxia, viral infection, ER stress). Increased expression of eIF2 α has been linked to progression of thyroid carcinoma. Signaling inhibited by p58 (IPK) and PKR phosphorylation. Can attenuate the unfolded protein response and inhibits translation. This protein has been shown to interact with eIF2B α , eIF2B δ , eIF2B β subunit 2, p67, p68, and PKR. eIF2 α is a target for cleavage by caspase 3, caspase 6, caspase 8, and caspase 10. The Poly6067 antibody recognizes both mouse and human eIF2 α and has been shown to be useful for Western blotting.

Antigen References: 1. Ernst H, *et al.* 1987. *J. Biol. Chem.* 262:1206.
2. Van Huizen R, *et al.* 2003. *J. Biol. Chem.* 278:15558

Related Products:

Product
Purified anti-eIF2 γ

Purified anti-eIF4E

HRP Donkey anti-rabbit IgG (minimal x-reactivity)

Clone

Poly6068

Poly6069

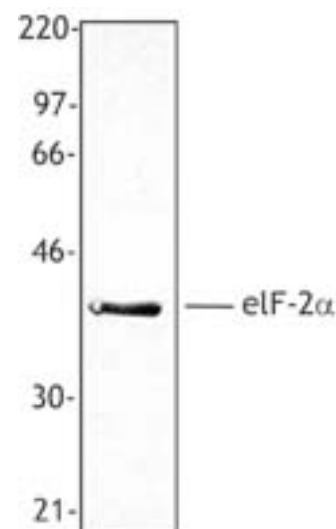
Poly4064

Application

WB

WB

ELISA, IHC, WB



Hela cell extract was resolved by electrophoresis, transferred to nitrocellulose, and probed with rabbit anti-eIF2 α antibody. Proteins were visualized using a donkey anti-rabbit secondary conjugated to HRP and a chemiluminescence detection system.



For research use only. Not for diagnostic use. Not for resale. BioLegend will not be held responsible for patent infringement or other violations that may occur with the use of our products.



*These products may be covered by one or more Limited Use Label Licenses (see the BioLegend Catalog or our website, www.biolegend.com/ordering#license). BioLegend products may not be transferred to third parties, resold, modified for resale, or used to manufacture commercial products, reverse engineer functionally similar materials, or to provide a service to third parties without written approval of BioLegend. By use of these products you accept the terms and conditions of all applicable Limited Use Label Licenses. Unless otherwise indicated, these products are for research use only and are not intended for human or animal diagnostic, therapeutic or commercial use.